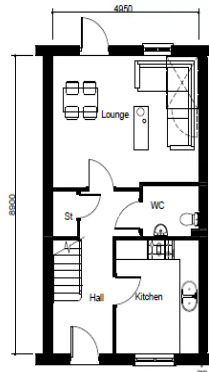
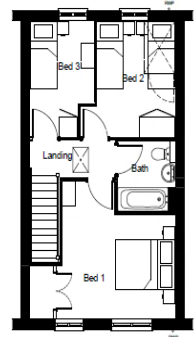


9 Homes to rent and buy at Somerdale Keynsham: phase 2.



GROUND FLOOR PLAN
88m² (947ft²) 3 BED 2 storey



FIRST FLOOR PLAN

E:\CURATE\0285 Cadbury Keynsham\design\flooring pack - Somerdale Car2\2014-04\154\floorplans.dwg

Left. Phase 2 layout.
Above. Example 3 bed affordable house layout

Developer	Taylor Wimpy	
Landlord	<u>Sovereign Housing Association</u>	
Scheme details	9 New build affordable homes to rent and buy on the Taylor Wimpy redevelopment of the former Cadbury site at Keynsham. These homes are part of the 2nd of a 5 phase development. For more information about the development go to <u>Taylor Wimpy Somerdale</u>	
Tenure and unit mix	Social rent:	4 x 1bed, 2 person flats 1 x 2bed 4 person houses 2 x 3bed 5person houses
	Intermediate (Shared Ownership)	2 x 2bed 4 person houses
Allocation	Homes will be allocated to people with a local connection to Bath and NE Somerset. All rented homes will be allocated through <u>Homesearch</u> Purchase of shared ownership homes will be through <u>Help to Buy South</u> Purchasers will be able to buy a minimum of a 40% share and will be charged 2.5% rent on the unsold equity.	
Completion	These homes will complete in April 2017.	