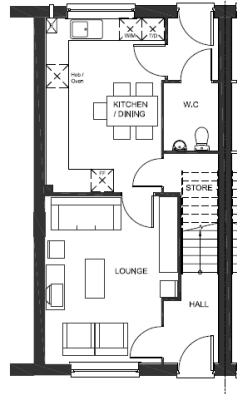
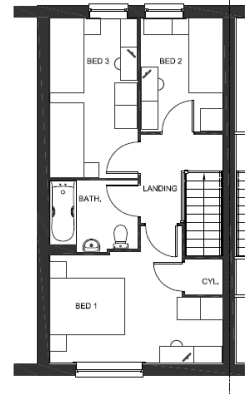


57 homes to rent and buy at Beechham Place. Fosseway. MSN.

Site Plan



GROUND FLOOR PLAN



FIRST FLOOR PLAN

Above: Example layout of affordable 3 bed house

Developer	Barratt Homes.	
Landlord	<u>Aster Group</u>	
Scheme details	57 New build affordable homes to rent and buy on the <u>Barratt Homes</u> development at Beecham Place. Fosseway. Midsomer Norton.	
Tenure and unit mix	Social Rent	6 x 1 bed, 2 person flats 17 x 2 bed 4 person houses 16 x 3 bed 5 person houses 4 x 4 bed 6 person houses
	Intermediate (shared Ownership)	8 x 2 bed 4 person houses 6 x 3 bed 5 person houses
Allocation	Homes will be allocated to people with a local connection to Bath and NE Somerset. All rented homes will be allocated through <u>Homesearch</u>. Purchase of shared ownership homes will be through <u>Help to Buy South</u> Purchasers will be able to buy a minimum of a 40% share and will be charged 2.75% rent on the unsold equity.	
Completion	Homes will be complete between 2017 and May 2020.	