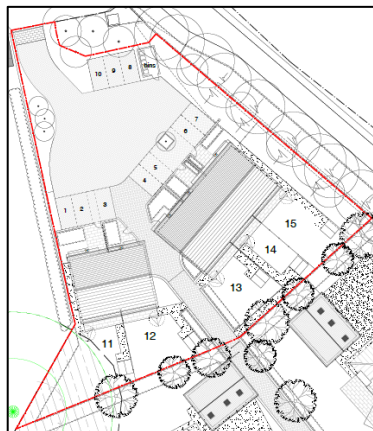
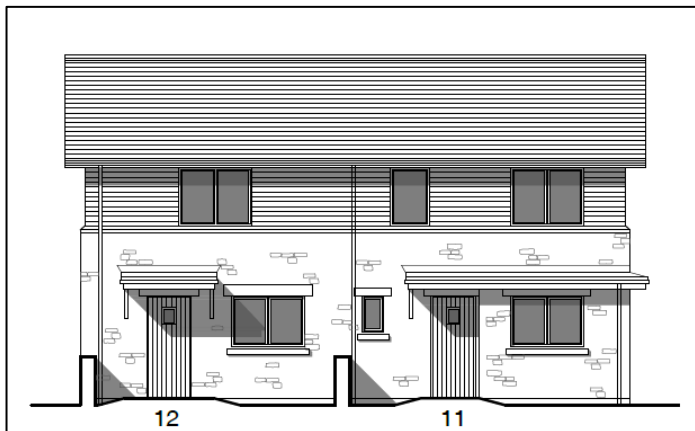


5 Homes to rent and buy at Tynning Meadows, Tynning Road, Bathampton.



Left: Shared ownership homes at Tynning Meadows, Bathampton
 Above: Affordable housing layout at Tynning Meadows, Bathampton

Developer	Charlcombe Homes.	
Landlord	<u>Knightstone Housing Association</u>	
Scheme details	5 new build affordable homes to rent and buy on the <u>Charlcombe Homes.</u> development at Tynning Meadows, Tynning Road, Bathampton.	
Tenure and unit mix	Social rent:	2 x 3 bed 5 person houses 1 x 2 bed 4 person house
	Intermediate (Shared Ownership)	1 x 2 bed 4 person house 1 x 3 bed 5 person house
Allocation	<p>Homes will be allocated to people with a local connection to Bath and NE Somerset. All rented homes will be allocated through <u>Homesearch.</u> Local connections to Bathampton will apply.</p> <p>Purchase of shared ownership homes will be through <u>Help to Buy South</u> Purchasers will be able to buy a minimum of a 40% share and will be charged 1% rent on the unsold equity.</p>	
Completion	These homes are scheduled to complete in March 2017.	