

# **Beechen Cliff School Spotlight Report**

## Beechen Cliff School Spotlight

Key facts .....	2
Profile .....	2
Inspection ratings .....	3
Attainment at Key Stage 4.....	3
Attainment at 'A' level and equivalent.....	5
Progress made from Key Stage 2 to Key Stage 4 ("value added").....	6
Attendance and absence.....	7
School contact details .....	8
Sources and notes .....	8

### Key facts

<b>Gender:</b>	Boys
<b>Age range:</b>	11 to 18
<b>Number on roll:</b>	1145
<b>Planned admissions number 2012/13:</b>	162
<b>Type of school:</b>	Secondary Academy
<b>Religious character:</b>	None
<b>Specialist type:</b>	Technology

### Profile

*The text below is sourced from the school's website, February 2012:*

Beechen Cliff School is a unique school in many respects. The website gives you a taste of some of the special qualities which make Beechen Cliff stand out, but you need to visit and meet the boys to fully understand why Beechen Cliff is different from other schools in Bath and beyond.

We aim to provide the best possible education for each pupil, to prepare each pupil for adulthood and to set the highest possible standards in all areas of school life; academic, sporting and beyond. We know every pupil. Individuals matter and visitors comment on the friendliness and confidence of the pupils.

I very much hope that you are able to visit us in order that you can understand how this pride and determination manifests itself in our day to day work.

**Andrew Davies**  
**Headmaster**

## Inspection ratings

For local authority maintained schools Spotlight Reports contain ratings from and links to the most recent inspection reports for the school on the Ofsted website. For academies this information is not available on the Ofsted website.

The following Ofsted inspection report from Feb 2011 is available on Beechen Cliff School's own website:

[www.beechencliff.org.uk/files/OfstedReport.pdf](http://www.beechencliff.org.uk/files/OfstedReport.pdf)

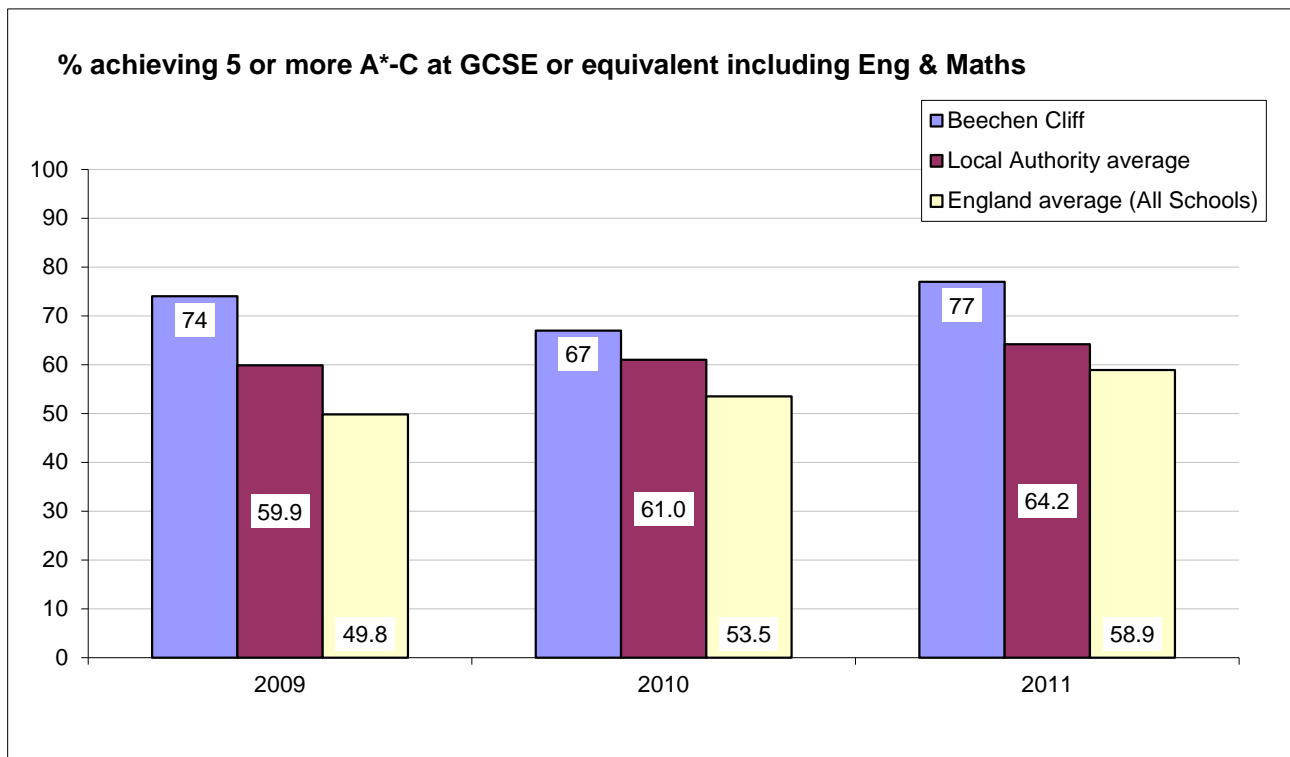
Scores relating to the following are as follows:

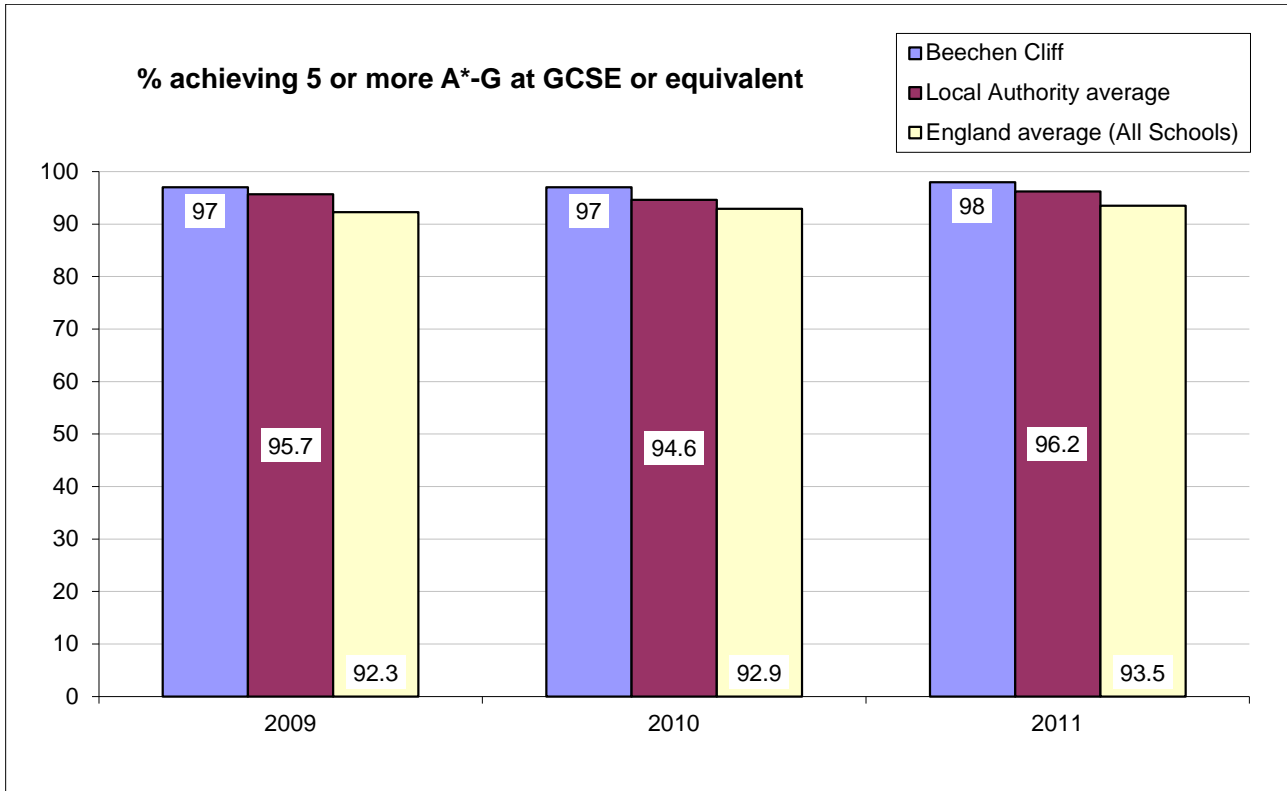
Overall effectiveness	1
Capacity to improve	1
Outcomes / achievement	1
Leadership and management	1

Inspection grades: 1 is outstanding, 2 is good, 3 is satisfactory, 4 is inadequate.

## Attainment at Key Stage 4

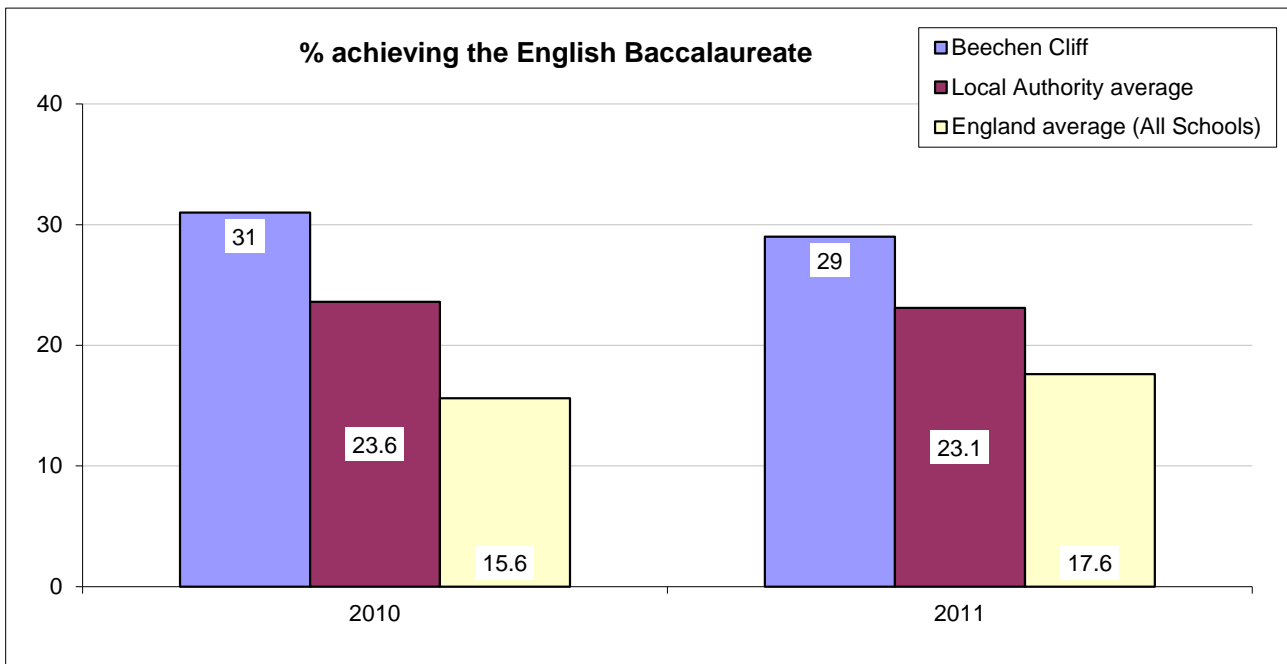
Key Stage 4 covers two years of education, Year 10 and Year 11, when pupils are aged between 14 and 16.





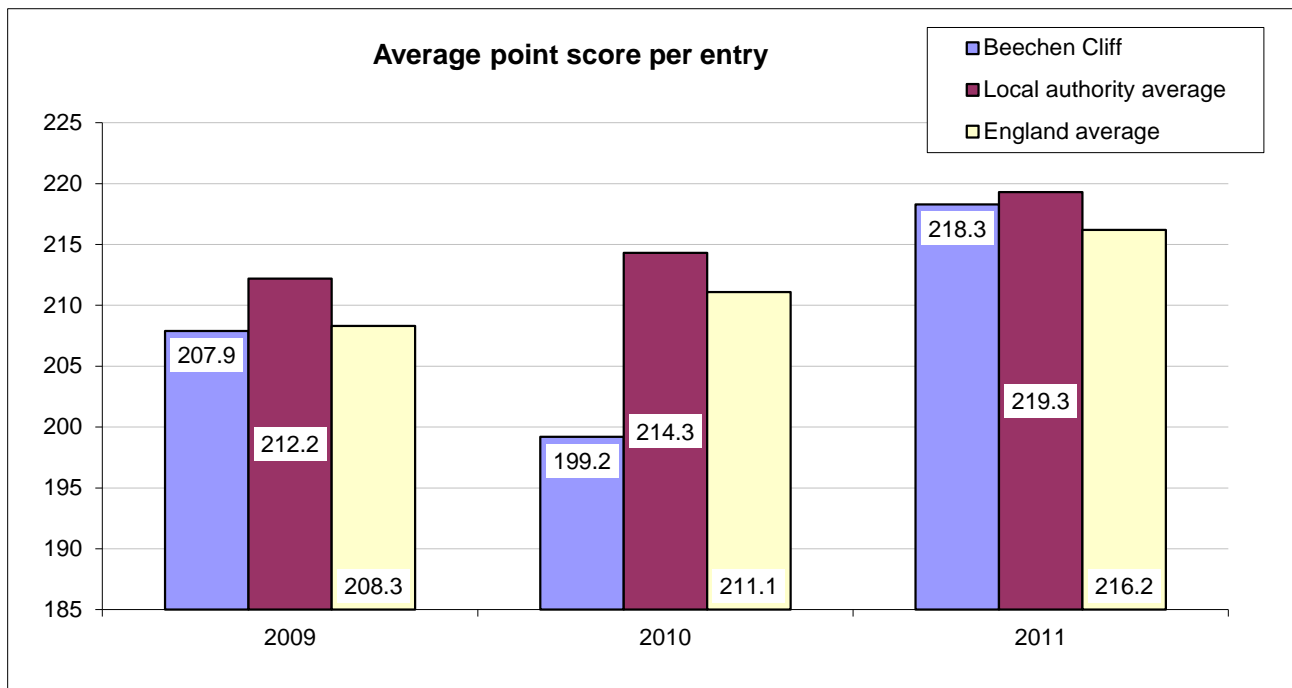
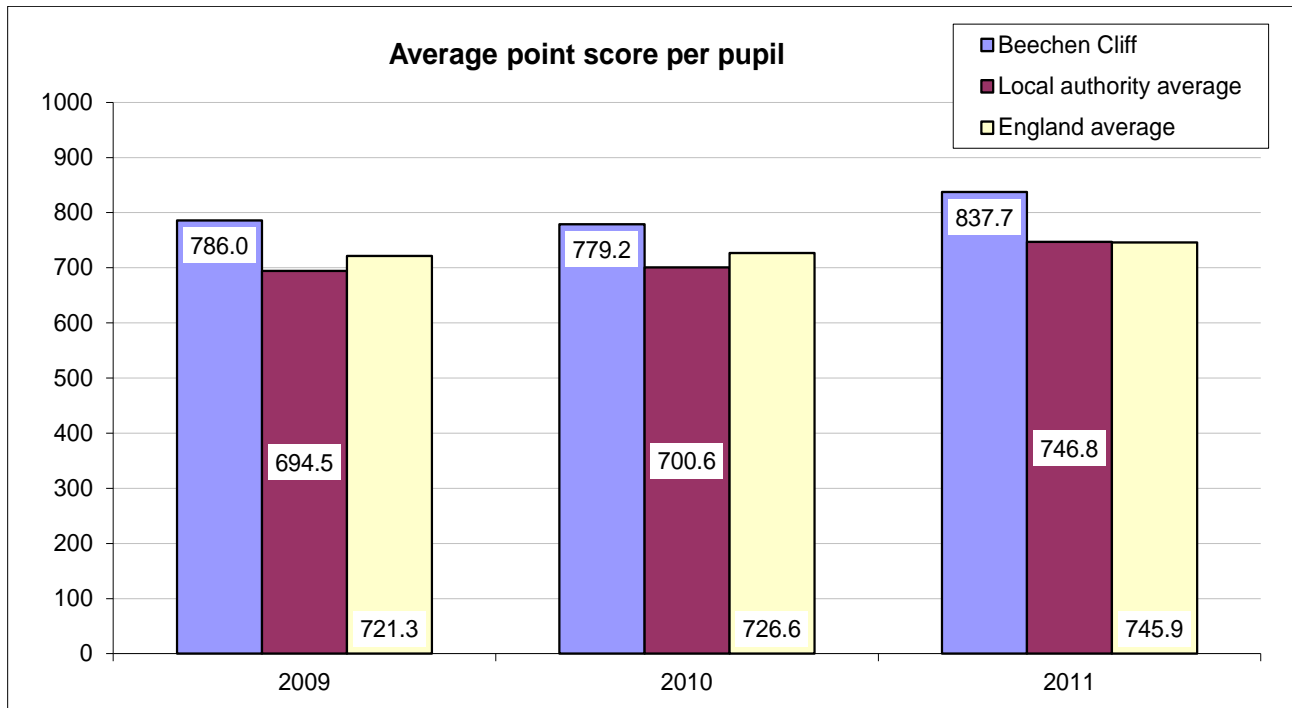
**Percentage achieving the English Baccalaureate**

The English Baccalaureate indicator shows the percentage of pupils at the end of Key Stage 4 achieving GCSEs/iGCSEs at grades A\*-C in English, mathematics, sciences, a language and a humanities subject. Results for periods prior to 2010 have not been published.



Data sources and further notes can be found at the end of the document.

## Attainment at 'A' level and equivalent

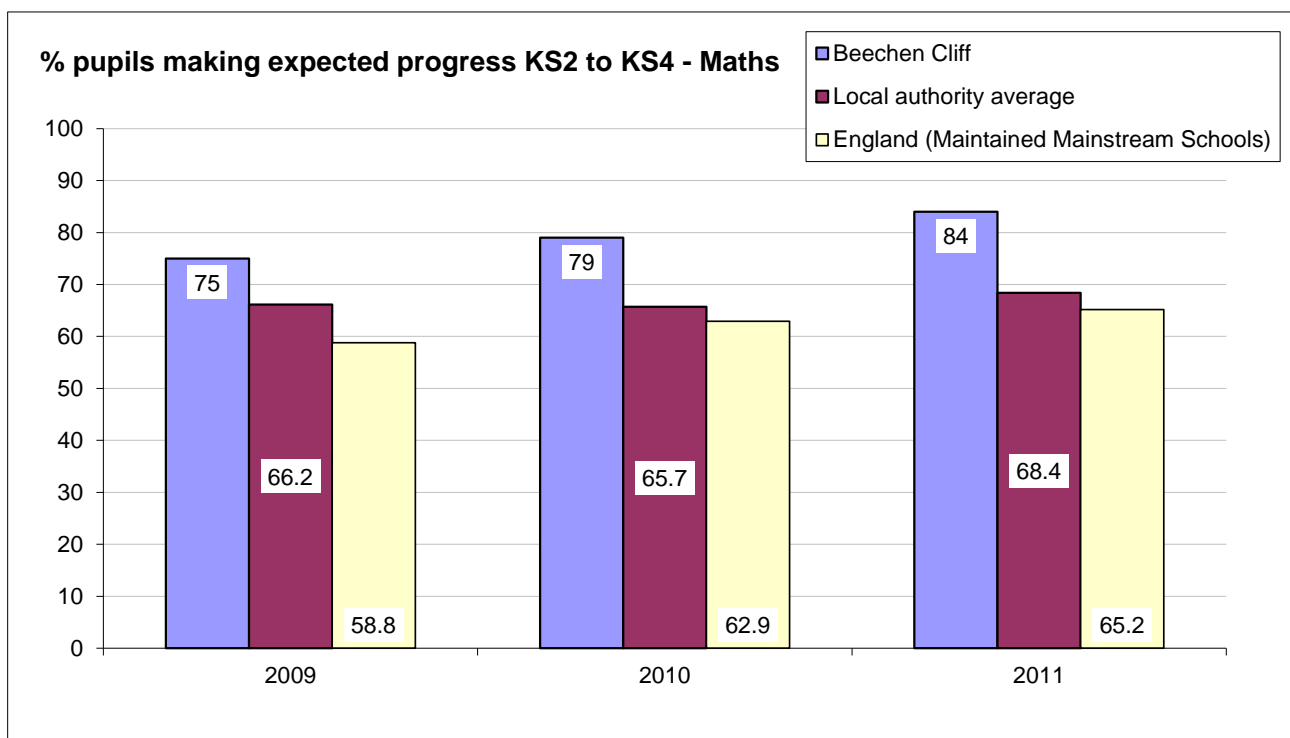
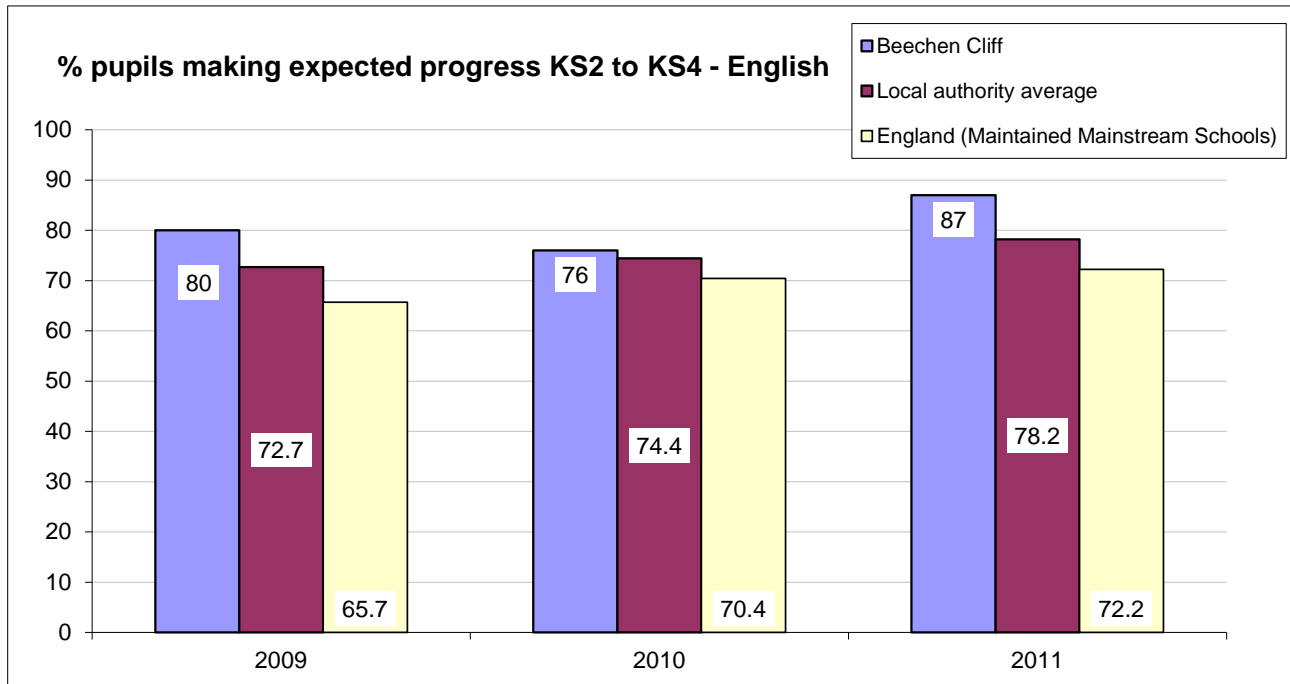


Data sources and further notes can be found at the end of the document.

## Progress made from Key Stage 2 to Key Stage 4 (“value added”)

This measures progress made between pupils’ attainment at the end of Key Stage 2 (Year 6, when pupils are 11) and the end of Key Stage 4 (Year 11, when pupils are aged 16).

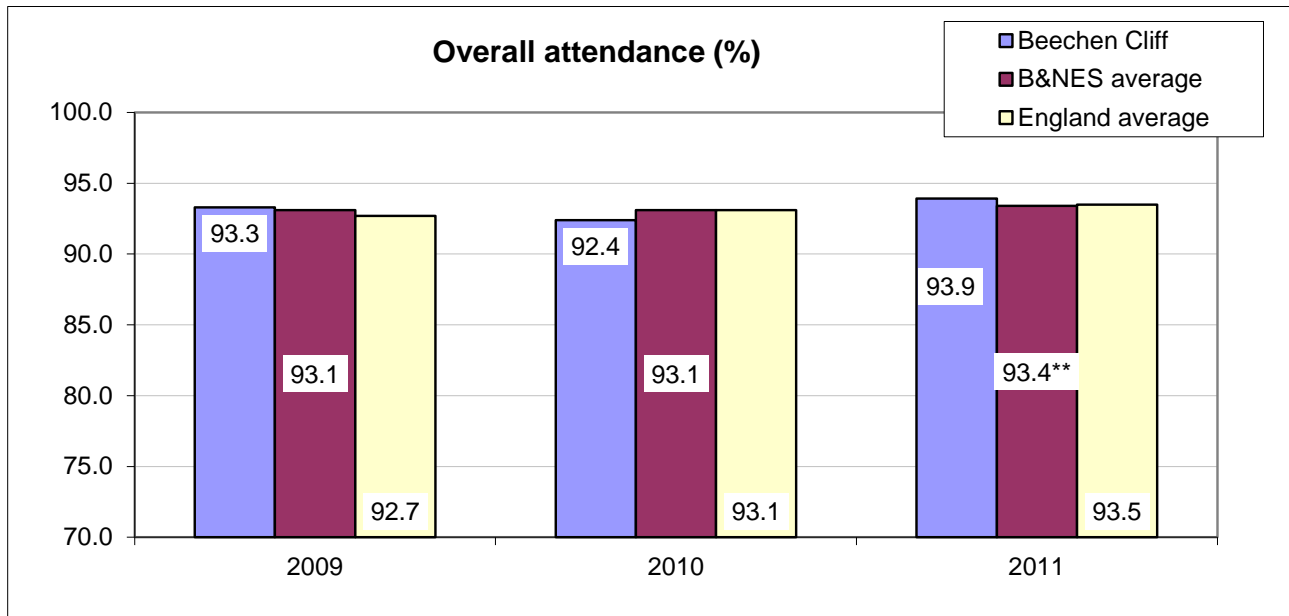
### Percentage making the nationally expected 3 levels progress



Data sources and further notes can be found at the end of the document.

## Attendance and absence

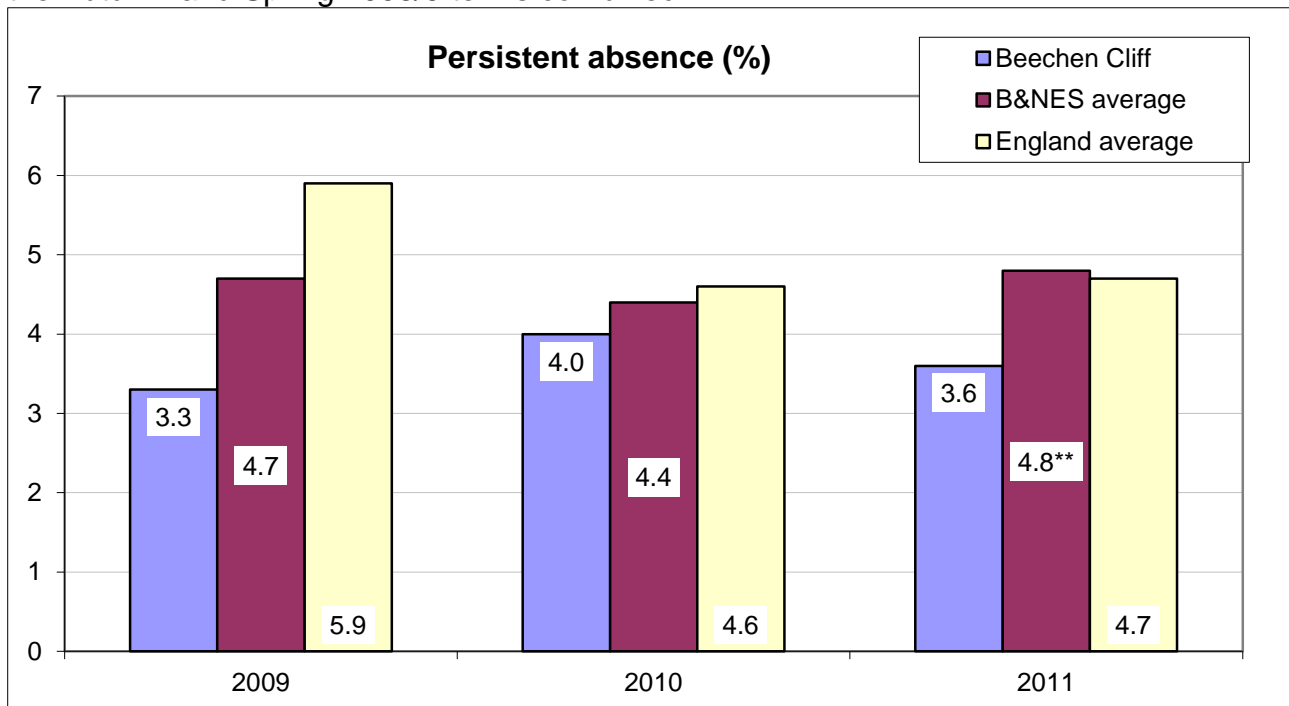
### Overall attendance



**\*\* The B&NES 2011 figure is not published, so this has been calculated by averaging the individual schools overall attendance figure**

### Persistent absence

**Persistent absence** is the percentage of pupil enrolments equalling or exceeding the threshold number of half-day absences. In this instance, the threshold for the figures below is set to equal 20% of the national average of possible half-day sessions (52 or more half-day sessions) over the Autumn and Spring 2008/9 terms combined.



**\*\* The B&NES 2011 figure is not published, so this has been calculated by averaging the individual schools persistent absence figure**

## School contact details

Head teacher: Mr A Davies  
Chair of Governors: Mr C J Oldham

Beechen Cliff School  
Alexandra Park  
Bath, BA2 4RE

Telephone: 01225 480 466  
Fax: 01225 314 025

Email: [headmaster@beechencliff.org.uk](mailto:headmaster@beechencliff.org.uk)  
Website: [www.beechencliff.org.uk](http://www.beechencliff.org.uk)

## Sources and notes

Because each year group is made up of different pupils, with different prior attainment and other characteristics, results may fluctuate from year to year for reasons to do with the pupils rather than the school. Small fluctuations from year to year are unlikely to be significant, particularly if the school's year group is small.

### *Notes on Key facts*

The **planned admissions number 2012/13** comes from the school admissions booklet for 2012/13, which can be found at the following link:  
[www.bathnes.gov.uk/SecondaryAdmissions2012-2013](http://www.bathnes.gov.uk/SecondaryAdmissions2012-2013)

Other data in this section is sourced from the Ofsted website, February 2012 and from Edubase2: [www.edubase.gov.uk](http://www.edubase.gov.uk)

### *Notes on Attainment at Key Stage 4 for all pupils*

Source: Department for Education – School and college performance tables  
[www.education.gov.uk/performance/tables/](http://www.education.gov.uk/performance/tables/)

England averages are for local authority maintained schools only.

Notes for results for pupils at the end of Key Stage 4 (2009):  
[www.education.gov.uk/performance/tables/schools\\_09/s5.shtml](http://www.education.gov.uk/performance/tables/schools_09/s5.shtml)

### *Notes on attainment at 'A' level and equivalent*

Average points per entry and average points per pupil are taken from the Department for Education - School and college performance tables.

Local authority averages are the averages for local authority maintained schools. There are different figures published nationally, which can include other schools and colleges.



England average figures are taken from the School and college performance tables. These figures exclude independent schools except for in 2007 when the figure is just listed as "England Average".

### ***Notes on percentage making the expected progress between Key Stage 2 and Key Stage 4***

Source: Department for Education – School and college performance tables

[www.education.gov.uk/performancetables/](http://www.education.gov.uk/performancetables/)

Local authority average figures are not provided in the performance tables so are calculated as the average of the figures for the local authority's schools.

National figures are not provided.

Notes for Key Stage 2 to 4 progress measures (2009):

[www.education.gov.uk/performancetables/schools\\_09/s11.shtml](http://www.education.gov.uk/performancetables/schools_09/s11.shtml)

### ***Notes on attendance***

The percentage attendance figures are based on the overall absence figures published in the Department for Education – School and college performance tables. Taking 100% as the starting point and subtracting the overall absence.

The overall absence is calculated as the percentage of possible half-days absent.

The England figures are those listed as follows:

2011 - secondary state-funded

2010 – state funded schools

2009 – maintained schools only

2008 – listed as “England average”

### ***Notes on persistent absence***

Source: Department for Education – School and college performance tables.

Maintained mainstream schools only.

[www.education.gov.uk/performancetables/](http://www.education.gov.uk/performancetables/)

Notes for absence records (2009):

[www.education.gov.uk/performancetables/schools\\_09/s6.shtml](http://www.education.gov.uk/performancetables/schools_09/s6.shtml)