

BATH AND NORTH EAST SOMERSET COUNCIL

(VARIOUS ROADS, SOUTH WEST OUTER AREA, BATH) (PROHIBITION AND RESTRICTION OF PARKING AND LOADING) (NO STOPPING ON ENTRANCE MARKINGS) (AUTHORISED AND DESIGNATED PARKING PLACES) (VARIATION NO. 8) ORDER 2019 AND (VARIOUS ROADS, NORTH WEST OUTER AREA, BATH) (PROHIBITION AND RESTRICTION OF PARKING AND LOADING) (NO STOPPING ON ENTRANCE MARKINGS) (AUTHORISED AND DESIGNATED PARKING PLACES) (VARIATION NO. 18) ORDER 2019

The Bath and North East Somerset Council (“the Council”) in exercise of its powers under sections 1, 2, 4, 32, 35, 45, 46, 49, 51, 53 and 63A of and Part IV of Schedule 9 to the Road Traffic Regulation Act 1984 (“the 1984 Act”) and of all other enabling powers, after consultation with the chief officer of police in accordance with Part III of Schedule 9 to the 1984 Act, makes the following order:-

1. This order comes into operation on the 25th March 2019, and may be cited as the Bath and North East Somerset Council (Various Roads, South West Outer Area, Bath) (Prohibition and Restriction of Parking and Loading) (No Stopping on Entrance Markings) (Authorised and Designated Parking Places) (Variation No. 8) Order 2019 and the Bath and North East Somerset Council (Various Roads, North West Outer Area, Bath) (Prohibition and Restriction of Parking and Loading) (No Stopping On Entrance Markings) (Authorised and Designated Parking Places) (Variation No. 18) Order 2019

VARIATION OF EXISTING ORDERS

2. The Bath and North East Somerset Council (Various Roads, South West Outer Area, Bath) (Prohibition and Restriction of Parking and Loading) (No Stopping on Entrance Markings) (Authorised and Designated Parking Places) Order 2015, as varied by the Bath and North East Somerset Council (Various Roads, South West Outer Area, Bath) (Prohibition and Restriction of Parking and Loading) (No Stopping on Entrance Markings) (Authorised and Designated Parking Places) (Variation No. 2) Order 2016, as varied by the Bath and North East Somerset Council (Various Roads, South West Outer Area, Bath) (Prohibition and Restriction of Parking and Loading) (No Stopping on Entrance Markings) (Authorised and Designated Parking Places) (Variation No. 3) Order 2017, as varied by the Bath and North East Somerset Council (Various Roads, South West Outer Area, Bath) (Prohibition and Restriction of Parking and Loading) (No Stopping on Entrance Markings) (Authorised and Designated Parking Places) Order (Variation No. 4) 2018, is further varied and has effect as though:
 - (i) Tile E10 from that order is replaced with Tile E10 to this order.
3. The Bath and North East Somerset Council (Various Roads, North West Outer Area, Bath) (Prohibition and Restriction of Parking and Loading) (No Stopping on Entrance Markings) (Authorised and Designated Parking Places) Order 2015, as varied by the Bath and North East Somerset Council (Various Roads, North West Outer Area, Bath) (Prohibition and Restriction of Parking and Loading) (No Stopping on Entrance Markings) (Authorised and Designated Parking Places) (Variation No. 7) Order 2016, as varied by the Bath and North East Somerset Council (Various Roads, North West Outer Area, Bath) (Prohibition and Restriction of Parking and Loading) (No Stopping on Entrance Markings) (Authorised and Designated Parking Places) (Variation No. 8) Order 2016, as varied by the Bath and North

East Somerset Council (Various Roads, North West Outer Area, Bath) (Prohibition and Restriction of Parking and Loading) (No Stopping on Entrance Markings) (Authorised and Designated Parking Places) (Variation No. 13) Order 2016, as varied by the Bath and North East Somerset Council (Various Roads, North West Outer Area, Bath) (Prohibition and Restriction of Parking and Loading) (No Stopping on Entrance Markings) (Authorised and Designated Parking Places) (Variation No. 14) Order 2017, as varied by the Bath and North East Somerset Council (Various Roads, North West Outer Area, Bath) (Prohibition and Restriction of Parking and Loading) (No Stopping on Entrance Markings) (Authorised and Designated Parking Places) (Variation No. 16) Order 2017, as varied by the Bath and North East Somerset Council (Various Roads, North West Outer Area, Bath) (Prohibition and Restriction of Parking and Loading) (No Stopping on Entrance Markings) (Authorised and Designated Parking Places) (Variation No. 17) Order 2018, as varied by the Bath and North East Somerset Council (Various Roads, North West Outer Area, Bath) (Prohibition and Restriction of Parking and Loading) (No Stopping on Entrance Markings) (Authorised and Designated Parking Places) (Variation No. 4) Order 2018, is further varied and has effect as though:

- (i) Tile E9 from that order is replaced with Tile E9 to this order.

Given under the Common Seal of the Bath and North East Somerset Council the 21st day of March 2019.

THE COMMON SEAL of
BATH AND NORTH EAST
SOMERSET COUNCIL

was hereunto affixed in the
presence of:-

Cornie-Anne R. Fern
Authorised signatory



Bath & North East Somerset Council

The Bath and North East Somerset Council (Various Roads, North West Outer Area, Bath) (Prohibition and Restriction of Parking and Loading) (No Stopping on Entrance Markings) (Authorised and Designated Parking Places) (Variation No 28) Order 2019

Parking Zones in Area

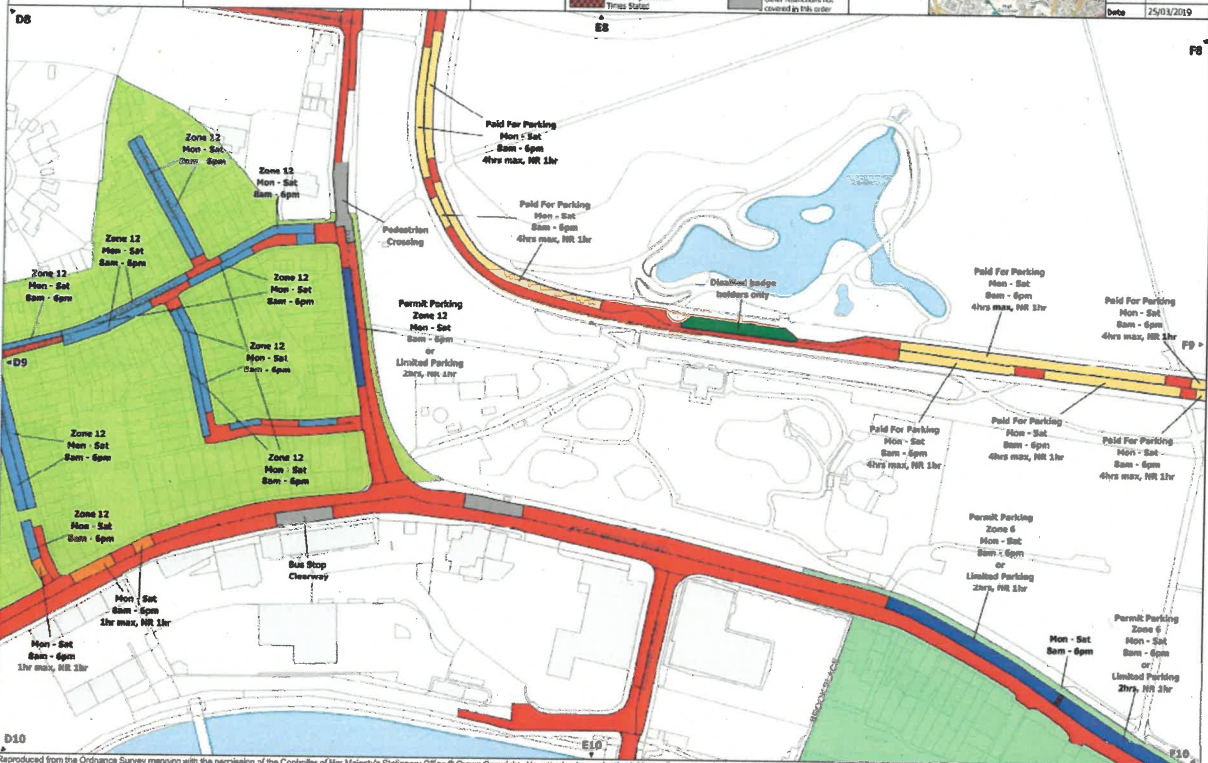
- Zone 12
- Zone 6

Restrictions

- No Parking and No Loading at Any Time
- No Parking Between Times Stated & No Loading Between Times Stated
- No Parking at Any Time
- No Parking Between Times Stated
- Limited Parking
- Permit Parking Place
- Permit Parking & Paid For Parking Place
- Other restrictions not covered by this order



Locality	Bath
TPO Area	Bath North West Outer Area
Title	E9
Date	25/03/2019



Reproduced from the Ordnance Survey mapping with the permission of the Controller of Her Majesty's Stationary Office © Crown Copyright. Unauthorised reproduction infringes Crown copyright and may lead to prosecution or civil proceedings. Licence number 100223334

Bath & North East Somerset Council

The Bath and North East Somerset Council (Various Roads, South West Outer Area, Bath) (Prohibition and Restriction of Parking and Loading) (No Stopping on School Entrance Markings) (Authorised and Designated Parking Places) (Variation No 8) Order 2019

Parking Zones in Area

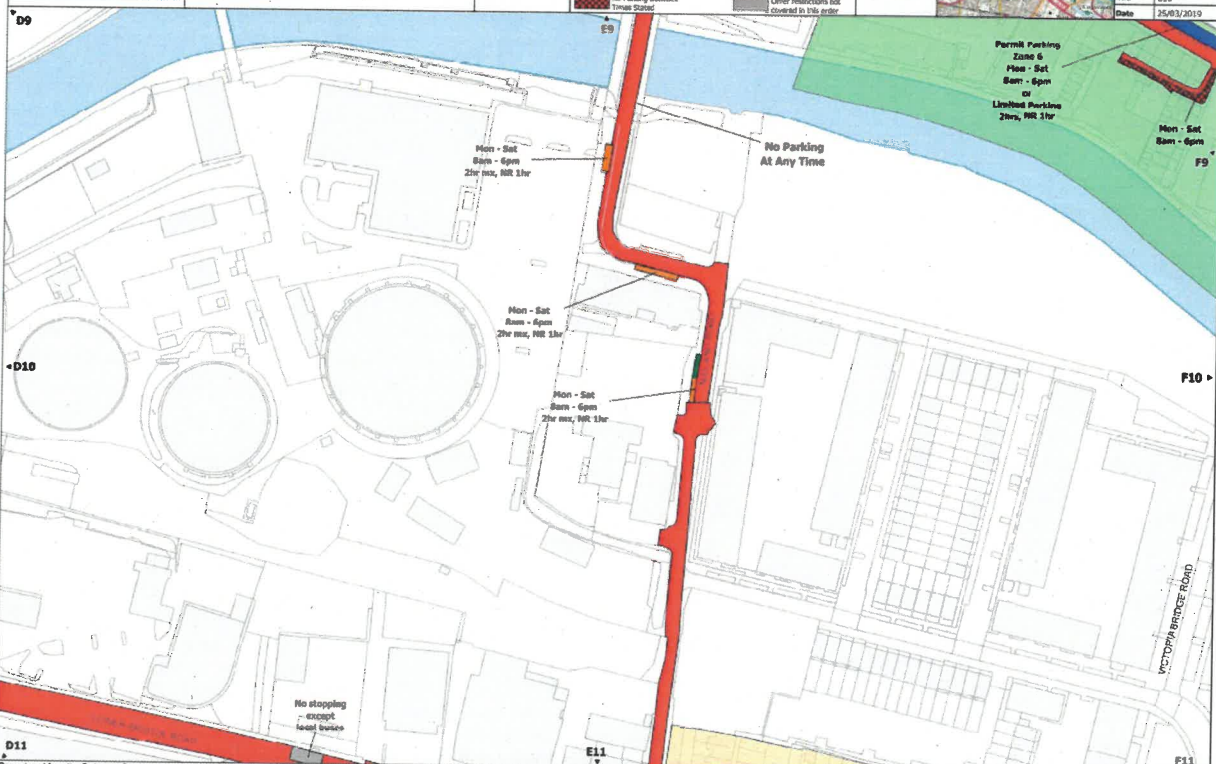
- Zone 1
- Zone 6

Restrictions

- No Parking and No Loading at Any Time
- No Parking Between Times Stated & No Loading Between Times Stated
- No Parking at Any Time
- No Parking Between Times Stated
- Limited Parking
- Permit Parking Place
- Permit Parking & Paid For Parking Place
- Other restrictions not covered by this order



Locality	Bath
TPO Area	Bath South West Outer Area
Title	E10
Date	25/03/2019



Reproduced from the Ordnance Survey mapping with the permission of the Controller of Her Majesty's Stationary Office © Crown Copyright. Unauthorised reproduction infringes Crown copyright and may lead to prosecution or civil proceedings. Licence number 100223334