

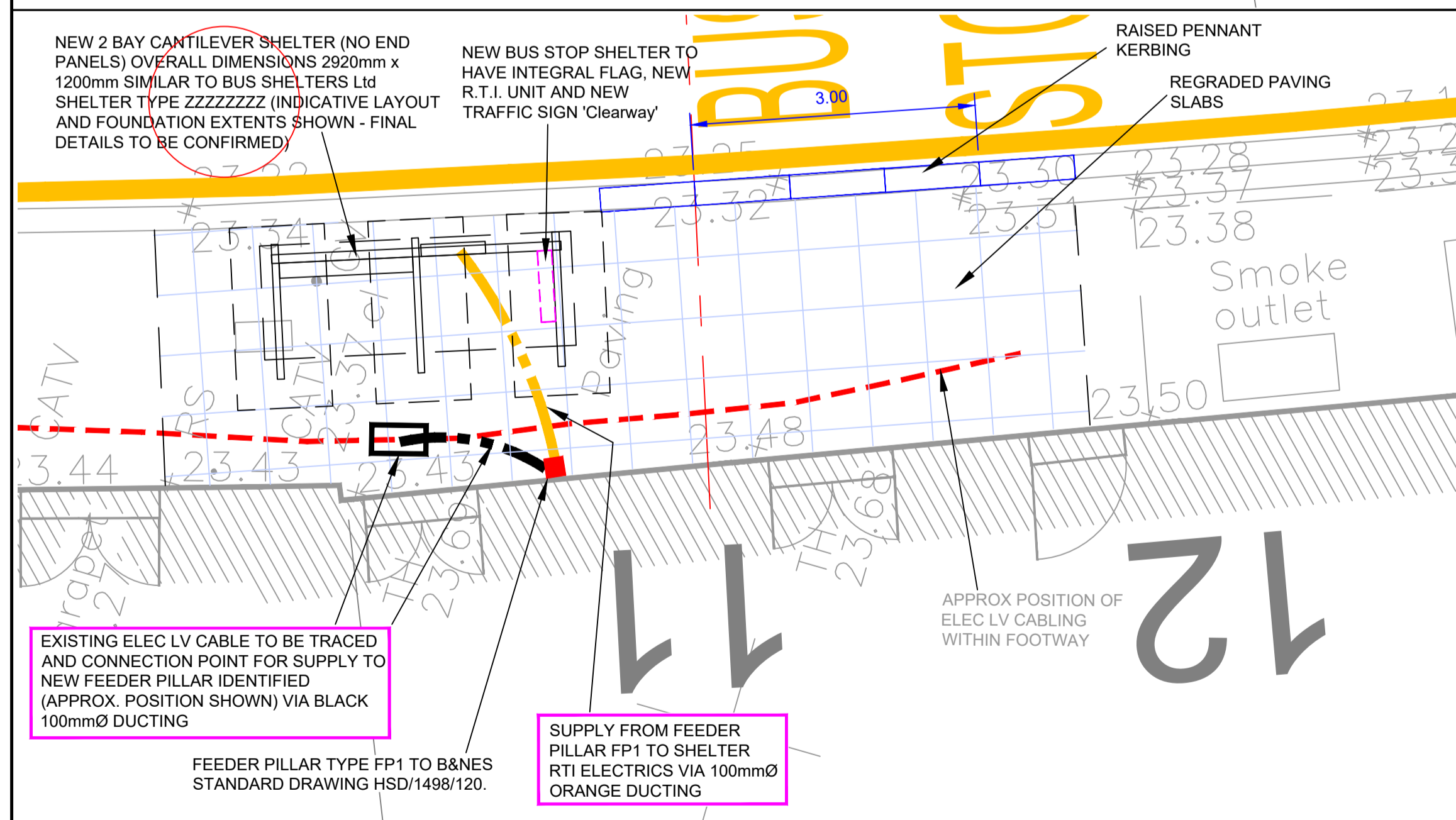
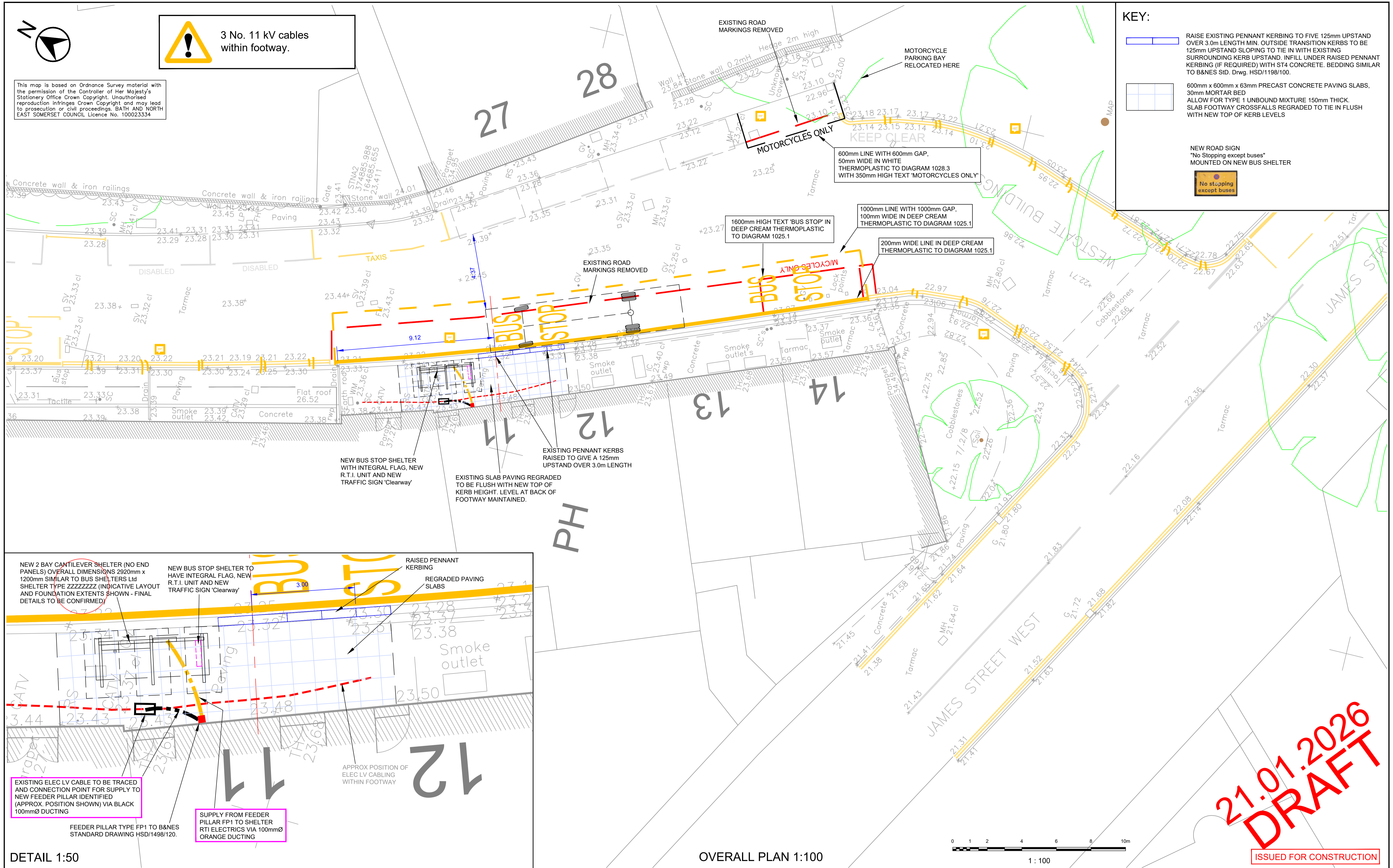
3 No. 11 kV cables within footway.

This map is based on Ordnance Survey material with the permission of the Controller of Her Majesty's Stationery Office Crown Copyright. Unauthorised reproduction infringes Crown Copyright and may lead to prosecution or civil proceedings. BATH AND NORTH EAST SOMERSET COUNCIL Licence No. 100023334

KEY:

- RAISE EXISTING PENNANT KERBING TO FIVE 125mm UPSTAND OVER 3.0m LENGTH MIN. OUTSIDE TRANSITION KERBS TO BE 125mm UPSTAND SLOPING TO TIE IN WITH EXISTING SURROUNDING KERB UPSTAND. INFILL UNDER RAISED PENNANT KERBING (IF REQUIRED) WITH ST4 CONCRETE. BEDDING SIMILAR TO B&NES SID. Drwg. HSD/1198/100.
- 600mm x 600mm x 63mm PRECAST CONCRETE PAVING SLABS, 30mm MORTAR BED ALLOW FOR TYPE 1 UNBOUND MIXTURE 150mm THICK. SLAB FOOTWAY CROSSFALLS REGRADED TO TIE IN FLUSH WITH NEW TOP OF KERB LEVELS

NEW ROAD SIGN  
"No Stopping except buses"  
MOUNTED ON NEW BUS SHELTER



DETAIL 1:50

OVERALL PLAN 1:100



1: 100

21.01.2026  
DRAFT

ISSUED FOR CONSTRUCTION

<p>PAUL GARROD Head of Highways Delivery Place Management</p>	PRODUCED BY	DESIGN GROUP	SCHEME TITLE	BACC Ph 2 WESTGATE BUILDINGS PARK and RIDE BUS STOP	DRAWING TITLE	BUS STOP RELOCATION OPTION 2-2 CIVILS WORKS (R.T.I. ON NEW BUS STOP SHELTER)	TRH SRC SJF TRH SRC SJF DRWN. CHKD. APPROV.	DATE JAN 2026 SCALE 1:100@A1 CLIENT REF. BACC Ph 2 WESTGATE BUILDINGS PARK and RIDE BUS STOP WORKS BUS STOP RELOCATION OPTION 2-2 (RTI ON SHELTER)	DRAWN BY TRH CHECKED SRC APPROVED BY SJF
	ISSUED FOR INFORMATION. 19.01.26 FIRST DRAFT.							TRH SRC SJF TRH SRC SJF DRWN. CHKD. APPROV.	DRAWING No. TCBCC002/02/02-2 REV. -
	REV. DATE REVISIONS							TRH SRC SJF TRH SRC SJF DRWN. CHKD. APPROV.	DRAWING No. TCBCC002/02/02-2 REV. -
	ISSUED FOR INFORMATION. 19.01.26 FIRST DRAFT.							TRH SRC SJF TRH SRC SJF DRWN. CHKD. APPROV.	DRAWING No. TCBCC002/02/02-2 REV. -