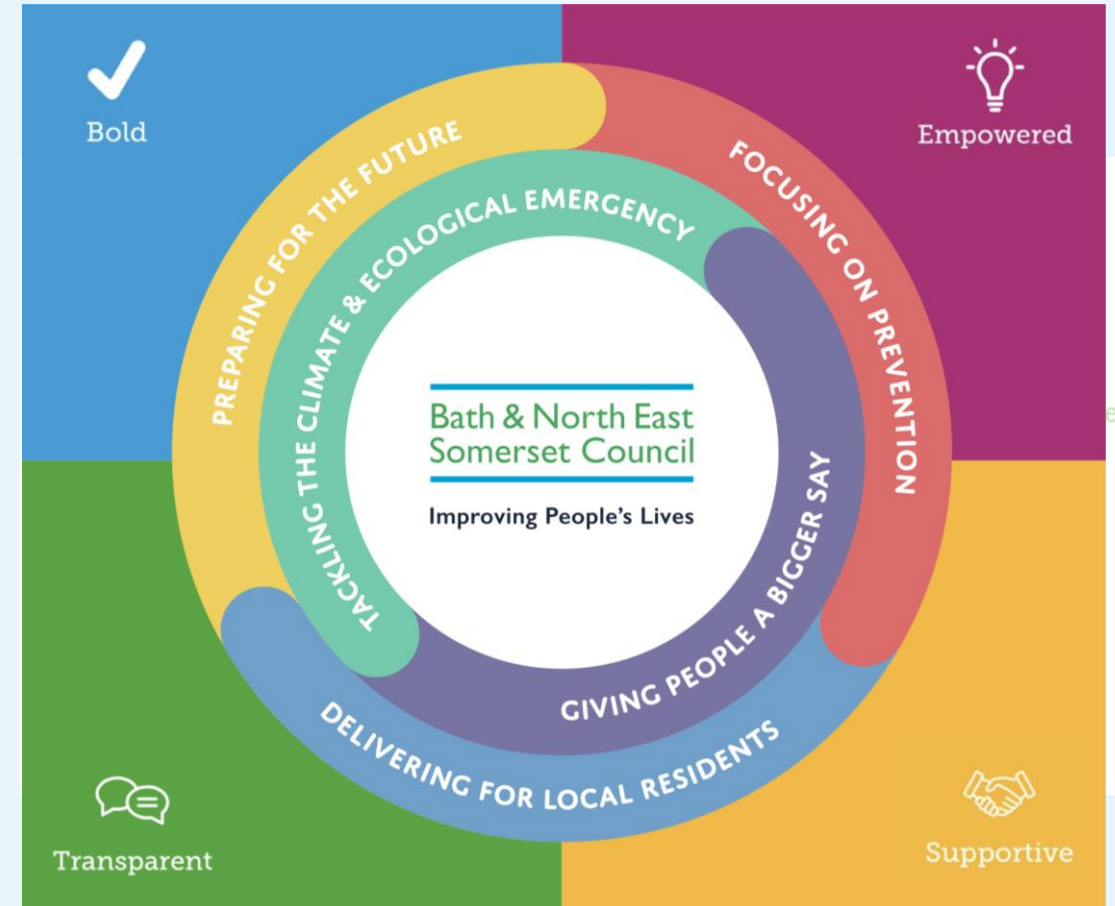

Bath & North East Somerset Council

Improving People's Lives

Bath Area Forum
18.07.2023
B&NES Local Plan Update

The B&NES Local Plan

- Sets out the planning framework for the next 20 years
- Spatial priorities and strategy, including site allocations and Development Management policies
- Reflects corporate priorities, relevant evidence and strategies, recent consultations and stakeholder engagement.



Local Plan Process



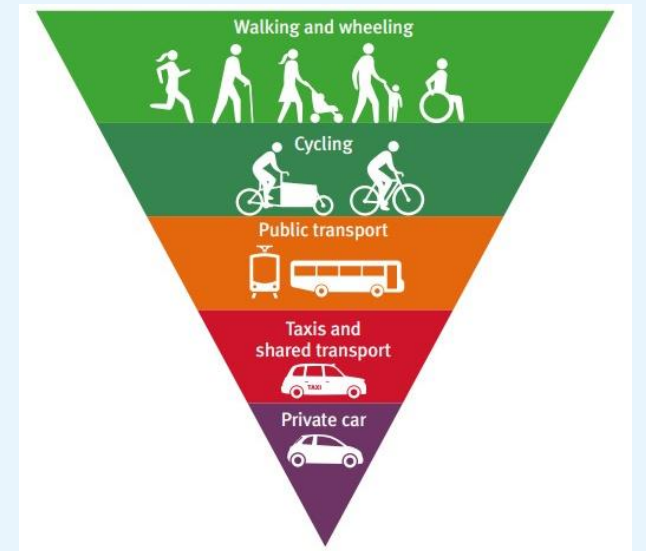
Bath & Environs Stakeholder Workshop - 30th Jan

Key aims and priorities emerging

Bath & North East
Somerset Council

Improving People's Lives

- **Zero Carbon:** strategic approach, decarbonising the city, building resilience, facilitating renewable energy opportunities
- **Moving around:** improve connectivity, prioritise walking and wheeling, better, cheaper, more responsive public transport.
- **Natural spaces:** link green and wild spaces, protect nature and improve biodiversity, more food growing, community involvement in rewilding



Bath & Environs Stakeholder Workshop - 30th Jan

Bath & North East
Somerset Council

Improving People's Lives

- **Identity & belonging:** retain and protect heritage and landscape character, enable high quality design, vibrant cultural offer for all.
- **Housing & shared prosperity:** affordable and key worker housing, lifetime/accessible homes, variety of employment and co-working spaces.
- **Healthy & inclusive:** Community involvement, good quality public spaces, access to health facilities, liveable neighbourhoods



Evidence

Local Housing Needs Assessment (LHNA)

- Identify the overall level of housing need: likely to be around 14,500 over the next 20 years (6,000 are already committed).
- More detailed work:
 - Breakdown of housing need by dwelling size, type and tenure
 - Housing accessibility requirements
 - Affordable housing



Evidence

Economic growth and office and industrial market assessment

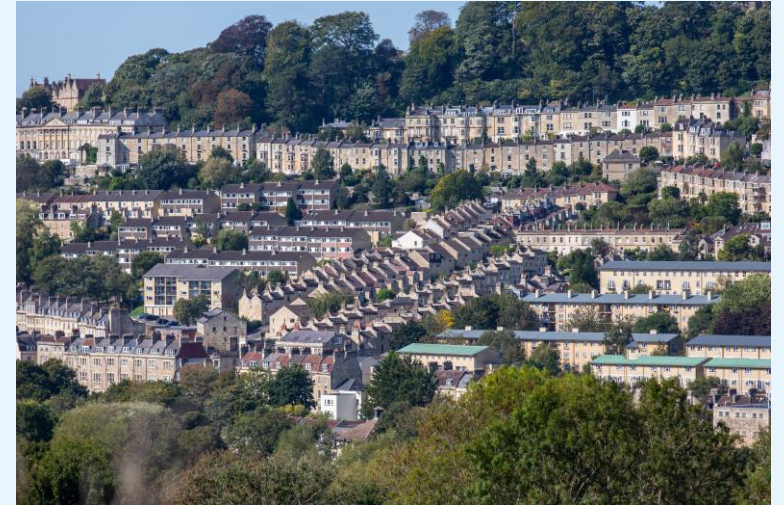
- Assessment of future growth of different economic sectors and resultant demand for different types of employment space
- Review of current supply of office, industrial and other types of employment space and current demand (allow to monitor impacts/effectiveness of the current strategy and policies)



Evidence

District-wide, includes:

- Renewable energy potential/strategy
- Green Spaces Strategy and Local Green Spaces
- Housing & Employment Land Availability Assessment (HELAA)
- Visitor Accommodation
- Strategic Flood Risk Assessment update
- Facilities audit/transport accessibility



Next steps

- Place based community representatives/stakeholders' workshop later in September
 - *Confirmation of issues & priorities – place vision*
 - *B&NES strategies/wider context*
 - *Identify & discuss potential opportunities*
 - *Evidence*
- Generated options to be assessed
- Evidence work to be completed
- Options document prepared for consultation



Bath & North East Somerset Council

Improving People's Lives