
Bath & North East Somerset Council

Improving People's Lives

Bathavon Forum 08/03/23
Local Plan

Bathavon Forum

The **Local Plan Partial Update** has now been adopted and will be used in the determination of planning applications. Its scope was to:

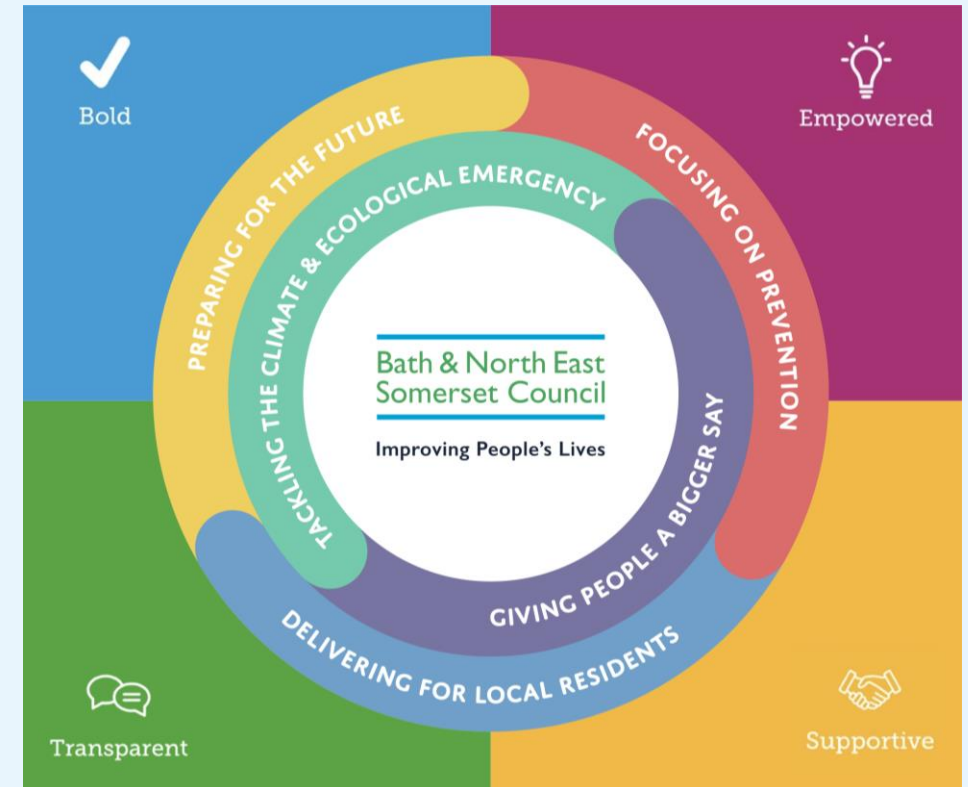
- Update planning policies to better address the climate and ecological emergencies
- Replenish housing supply in order that the necessary supply of housing land is maintained
- Address a limited range of other urgent local issues e.g. related to the 'green recovery' and student accommodation
- Amend policies for clarity and to ensure they are aligned with up to date national policy



Bathavon Forum

The new Local Plan

- The new Local Plan will provide the main statutory planning framework for managing change in B&NES over the next 20 years.
- It will be informed by the corporate priorities, relevant evidence and strategies, reflect recent consultations and stakeholder engagement.
- It sets out the spatial priorities, policy framework and will allocate sites for development. These will be used in the determination of planning applications.
- It seeks to balance the protection of valued assets and land uses, whilst providing a flexible approach that allows for market changes and innovation, and the delivery of key projects and development.



‘The new Local Plan needs to capture fresh thinking and innovative ideas, if it is to provide the best possible planning framework for managing change, delivering the places that we want to live in and protecting what we value.’

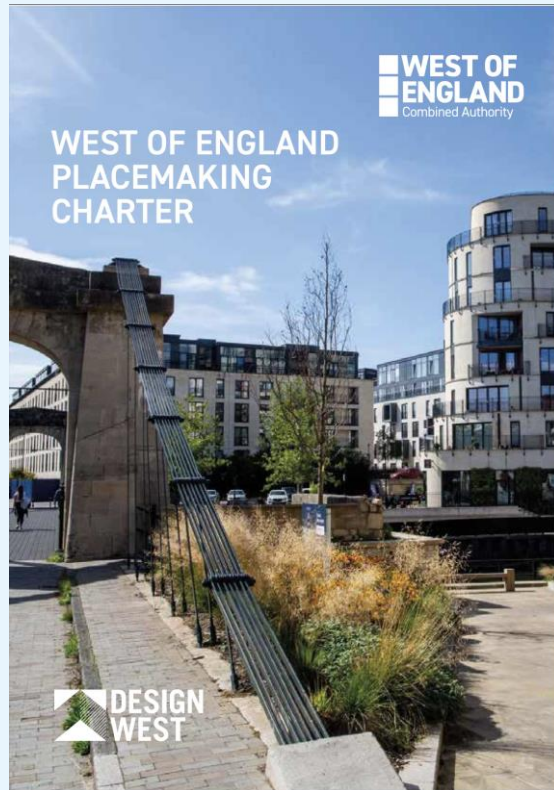


- *What are our priorities?*
- *How do we achieve healthy and resilient places and enable more sustainable lifestyles?*
- *Where should we allow new development to meet our housing needs and for sustainable economic development?*
- *What are the tensions with development in the AONB and the setting of the Bath World Heritage Site?*
- *How can we best respond to the climate and nature emergencies?*
- *What bolder decisions do we need to take?*

Bathavon Forum



Rural Areas Stakeholder Workshops – 12th & 23rd Jan and Bath & Environs Stakeholder Workshop – 30th Jan 2023



SIX THEMES - DEVELOPED FROM THE 2021 PLACEMAKING CHARTER

- ZERO CARBON & CLIMATE RESILIENCE
- MOVING AROUND
- NATURAL SPACES AND BIODIVERSITY
- IDENTITY & BELONGING
- HOUSING & SHARED PROSPERITY
- HEALTHY & INCLUSIVE COMMUNITIES

Rural Areas Stakeholder Workshops – 12th & 23rd Jan and Bath & Environs Stakeholder Workshop – 30th Jan

Bath & North East
Somerset Council

Improving People's Lives

Key values

- Attractive countryside, landscape quality & beauty
- Strong community ethos
- Richness/variety of wildlife
- Character of villages
- The local history and heritage
- Recreational opportunities – access to countryside/green space for walking and cycling



Rural Areas Stakeholder Workshops – 12th & 23rd Jan and Bath & Environs Stakeholder Workshop – 30th Jan

Some key issues

- **Zero Carbon:** strategic approach, work at community level – build resilience, share good practice, facilitate renewable energy opportunities
- **Moving around:** improve connectivity to cities, better walking/cycling opportunities including hub & spoke approach to key nodes (whole journey)
- **Natural spaces:** protect nature and improve biodiversity and wildlife connectivity. Dark skies, more guidance for farming, access to food growing
- **Identify & belonging:** retain character, community facilities vital, some sustainable growth including local co-working spaces.
- **Housing & shared prosperity:** affordable housing, smaller homes (down-sizing), lifetime/accessibile homes, employment opportunities
- **Healthy & inclusive:** good quality public spaces, community hubs, access to health facilities, liveable rural neighbourhoods

Bathavon Forum

Next Steps

- Drawing on the above resources and commissioned evidence base, devise a range of strategic and site specific options for how the city could change in the future.
- Test and refine these emerging ideas and options through further stakeholder engagement in the summer.
- Publish the Local Plan Options document in the winter as a more formal consultation stage.
- Review, revise and work towards a Draft Plan.



Bath & North East Somerset Council

Improving People's Lives