
Bath & North East Somerset Council

Improving People's Lives

Bath Area Forum
Local Plan: Bath

Bath Area Forum

The **Local Plan Partial Update** has now been adopted and will be used in the determination of planning applications. Its scope was to:

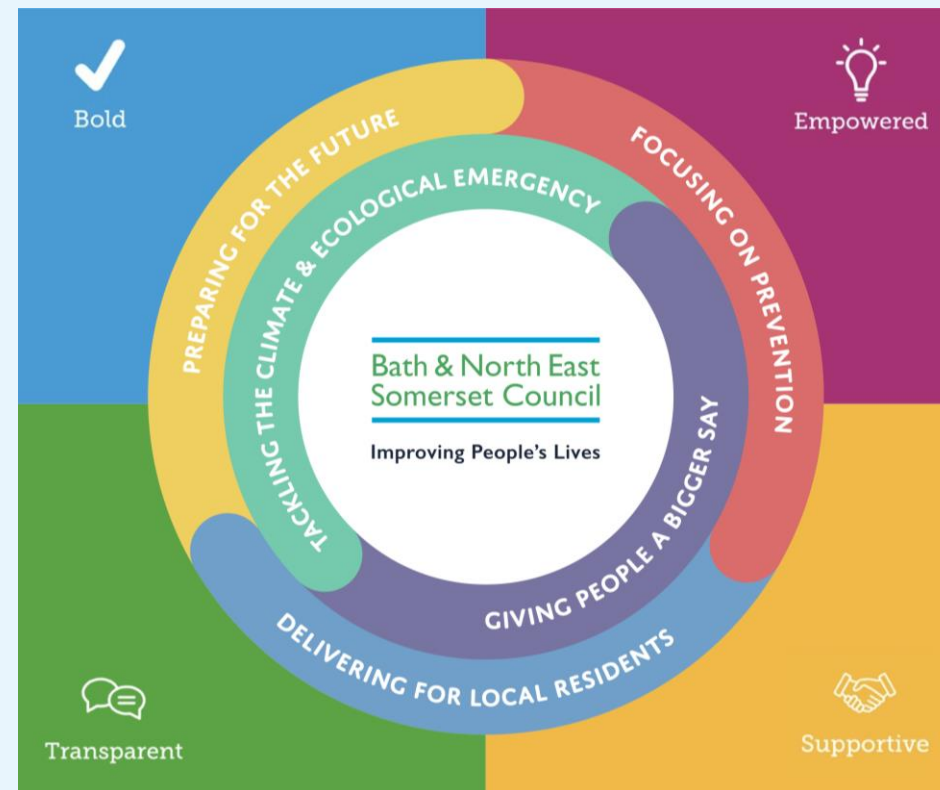
- Update planning policies to better address the climate and ecological emergencies
- Replenish housing supply in order that the necessary supply of housing land is maintained
- Address a limited range of other urgent local issues e.g. related to the 'green recovery' and student accommodation
- Amend policies for clarity and to ensure they are aligned with up to date national policy



Bath Area Forum

The new Local Plan

- The new Local Plan will provide the main statutory planning framework for managing change in B&NES over the next 20 years.
- It will be informed by the corporate priorities, relevant evidence and strategies, reflect recent consultations and stakeholder engagement.
- It sets out the spatial priorities, policy framework and will allocate sites for development. These will be used in the determination of planning applications.
- It seeks to balance the protection of valued assets and land uses, whilst providing a flexible approach that allows for market changes and innovation, and the delivery of key projects and development.



‘The new Local Plan needs to capture fresh thinking and innovative ideas, if it is to provide the best possible planning framework for managing change, delivering the places that we want to live in and protecting what we value.’



- *What are our priorities for Bath?*
- *How do we achieve a healthy and resilient city, and enable more sustainable lifestyles?*
- *Where should we allow new development to meet our housing needs, and for sustainable economic development?*
- *What are the tensions with development and the care of the World Heritage Site?*
- *How can we best respond to the climate and nature emergencies?*
- *What bolder decisions do we need to take?*

Bath Area Forum



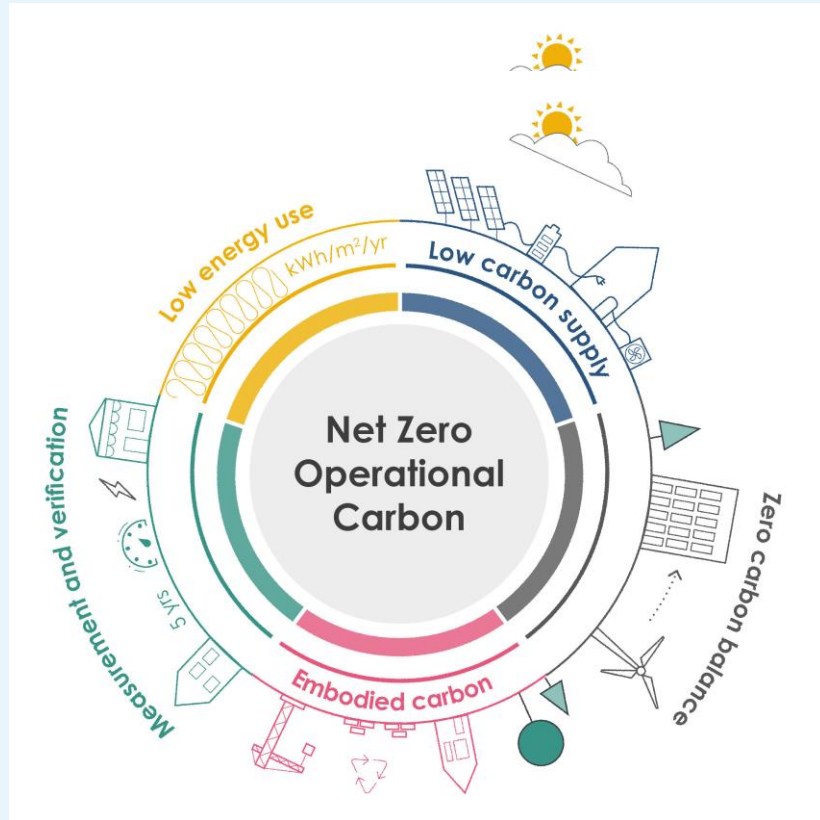
Bath Stakeholder Workshop – 30th Jan 2023

SIX THEMES - DEVELOPED FROM THE 2021 PLACEMAKING CHARTER



- ZERO CARBON & CLIMATE RESILIENCE
- MOVING AROUND
- NATURAL SPACES AND BIODIVERSITY
- IDENTITY & BELONGING
- HOUSING & SHARED PROSPERITY
- HEALTHY & INCLUSIVE COMMUNITIES

Bath Stakeholder Workshop – 30th Jan 2023



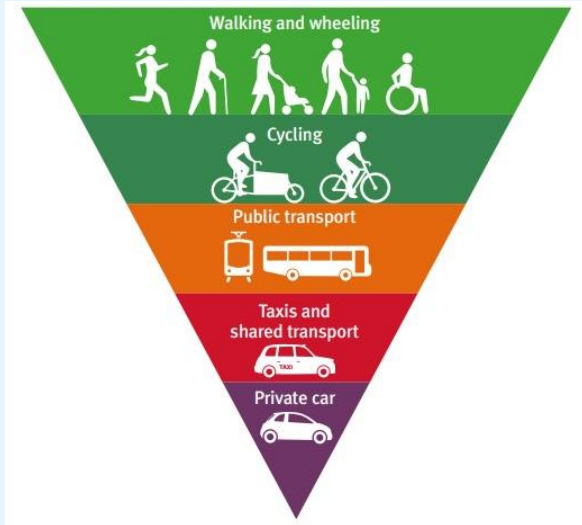
Leti – Net Zero Buildings

ZERO CARBON AND CLIMATE RESILIENCE

Development contributes to B&NES's net zero 2030 ambition and to climate resilience. More local, clean energy is generated.

The transition to greener low carbon lifestyles is supported for all. Resources are used efficiently, and buildings and materials are low carbon and/or are re-used creatively.

Bath Stakeholder Workshop – 30th Jan 2023



Cycling in B&NES & Sustainable Transport Hierarchy

MOVING AROUND

A network of safe, attractive and direct walking, wheeling and cycling routes and frequent, affordable, accessible, high quality public transport that connects communities to key destinations.

Neighbourhoods are liveable, meeting everyday needs.

Bath Stakeholder Workshop – 30th Jan 2023



Bathscape

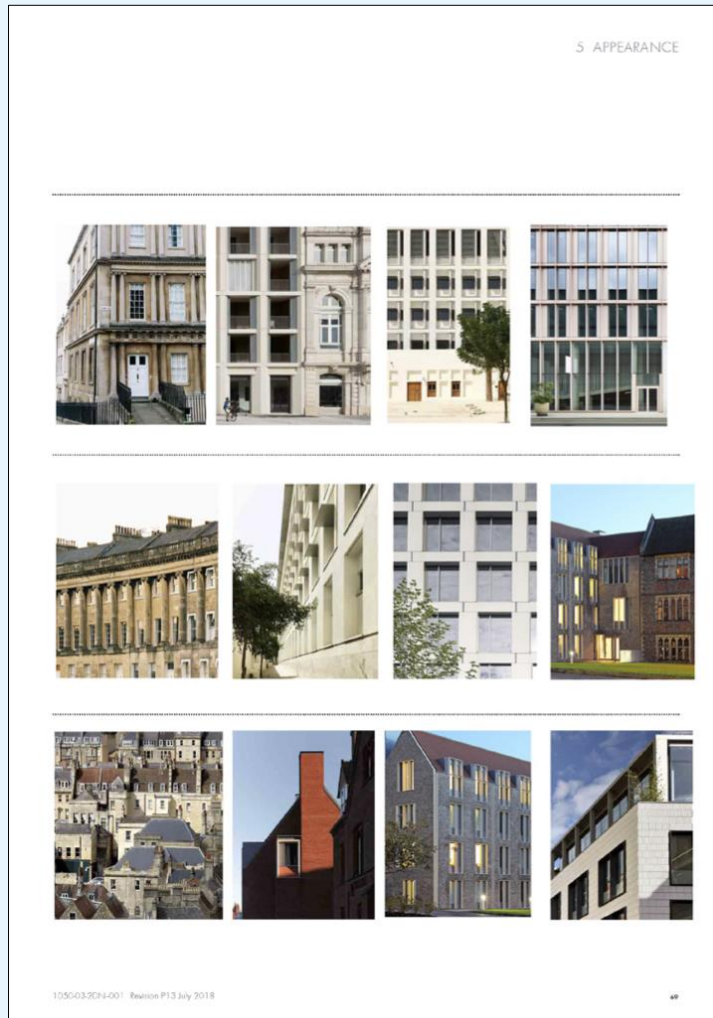
NATURAL SPACES & BIODIVERSITY

All communities have ready access to nature and high-quality, biodiverse green and blue spaces supporting health and wellbeing.

To reverse habitat and species loss transformational nature recovery ambitions are embedded within developments and created for existing landscapes.

Regenerative local food growing is supported.

Bath Stakeholder Workshop – 30th Jan 2023



IDENTITY & BELONGING

The diverse built, landscape and social identity of B&NES's urban and rural areas are understood, reflected and enhanced in new developments.

These are distinctive, respectful of context, innovative and creative - contributing to places culturally, socially, economically and environmentally.

Bath Stakeholder Workshop – 30th Jan 2023



Mulberry Park

HOUSING & SHARED PROSPERITY

The delivery of affordable housing to responds to the district's demographic, social and economic needs - *including homes for older people, students, key workers, gypsies, travellers, and boat dwellers, supported accommodation and self-build dwellings.*

Opportunities are created for the types of jobs that are needed in our communities and there is the right type of space available for businesses to grow.

Bath Stakeholder Workshop – 30th Jan 2023



Milsom Quarter
& Bath Quays

HEALTHY & INCLUSIVE COMMUNITIES

Communities are involved creatively in the development of proposals and in the stewardship of places.

Places are inclusive to people of all ages and abilities. Buildings and places support strong communities and people's health, mental health and wellbeing.

There are enough places to come together. Vibrant town and city centres are created.

Bath & North East Somerset Council

Improving People's Lives