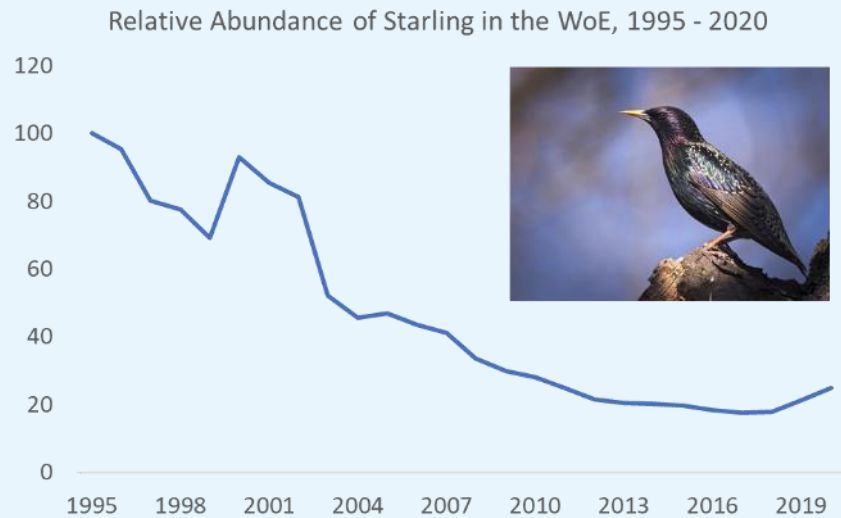




Parish and Town Nature Action Plans

Chew Valley Area Forum

An Ecological Emergency



Drastic decline in nature



Our reliance on a healthy
natural environment



An Ecological Emergency



Bath & North East Somerset Ecological Emergency Action Plan

2023-2030

16 March 2023



TACKLING THE CLIMATE
AND ECOLOGICAL
EMERGENCY

Bath & North East
Somerset Council

Improving People's Lives

Ecological Emergency Action Plan

B&NES Council's Ecological Emergency Action Plan



Theme: Working in partnership

Outcome	Action no.	Action	Service Area(s)	Timeline
Communities are supported in leading on nature recovery in their locality.	6.1	Produce guidance and a template to support parish and town councils in producing Local Nature Action Plans, and ensure these are linked with Avon Wildlife Trust's Wildlife Champion Network	GI & Nature Recovery	2023
We are continuing to work closely with partner organisations to deliver strategic opportunities for nature recovery.	6.2	Support the Forest of Avon Trust and Avon Needs Trees in delivering the 'Great Avon Wood' within B&NES, providing a new woodland for nature and people, and in their work to establish more trees and woodlands across B&NES.	GI & Nature Recovery	2023-25
	6.3	Engage with the Beaver Management Group to identify opportunities for restoring biodiversity, re-naturalising waterways and delivering nature-based solutions to flooding, as well as potential challenges, related to the beaver population in B&NES	GI & Nature Recovery	2023-25
	6.4	Work with National Trust and local residents to establish a nature-rich, accessible wildlife corridor from Bath to Bathampton Meadows.	GI & Nature Recovery	2023-30

What are Nature Action Plans?

- Sets out what you will do within your Parish / Town to help nature's recovery and address the Ecological Emergency
- Map existing assets, opportunities for nature recovery, and potential actions
- **Not prescriptive:** there is no formula for producing one
- **Not a statutory document:** no formal role in the planning system, but could inform neighbourhood plan if you wish

Nature Action Plan Template

- NAP Guidance
 - Tips on how to produce a Plan
 - Template
 - Ideas on potential actions
 - Helpful sources of information
 - Relevant local organisations/groups
- **You will need to write the Plan:** we want to enable and empower, not write plans on your behalf.
 - You are the experts on your local area!

Example: Frampton Cotterell

AIM: Increase connectivity through the creation of wildlife corridors and habitats			
Tree Planting	Scouts planted new woodland at Centenary Field Autumn 2021, to be completed throughout the winter of 2021/22. Tree planting consultation to help decide next locations for planting. To plant more fruit trees.	Autumn 2021 – Spring 2024	Record number of trees. Work with tree contractor to monitor health of trees and promote growth. Review tree cover using iTree.
Prevent spread of ash dieback	Tree survey undertaken of all trees on Parish Council owned land. To contract an arboriculturist to action subsequent tasks from the survey report.	Winter 2022-Spring 2024	Chosen contractor to monitor trees annually for signs of ash dieback.
Centenary Field management plan	Flower, hedge and tree planting as part of the Centenary Field woodland and grassland management plan. Follow 5 year plan (ending for renewal Spring 2025). Invite community groups/schools for planting.	Summer 2021 to Spring 2025.	Monitor works carried out by contractor. Monitor biodiversity e.g. through annual Bioblitz recordings and sightings from residents. Plan to be updated in 2024/25.

Long grassland zones	Creation of long grassland zones for small mammals, insects and birds. Sections of Centenary Field shall be left uncut, and the hay meadow cut on rotation.	Summer 2021 onward.	Monitor diversity of the grassland through updating species lists and annual bioblitz data. Review long grass areas annually.
The Park Management	To review conservation management at the Park and investigate increase in wildlife corridors, such as hedges, wildflowers and long grass zones.	2022	Monitor species spotted, such as on iNaturalist during bioblitz events and encourage residents to send in photos of species sightings.
Wildlife homes	Scouts to create a bug hotel at the new Centenary Field Woodland. A sculpture bug hotel has been commissioned using grant funding. To investigate and cost the possibility for hedgehog homes/highways, bird boxes, bat boxes and other homes for wildlife. Work with community groups.	Autumn/Winter 2021/22 ongoing	Monitor species spotted, such as on iNaturalist during bioblitz events and encourage residents to send in photos of species sightings.

Nature Recovery Ambitions & Targets








[Back to Section Contents](#)

[Back to Main Contents](#)

B&NES Nature Recovery Targets

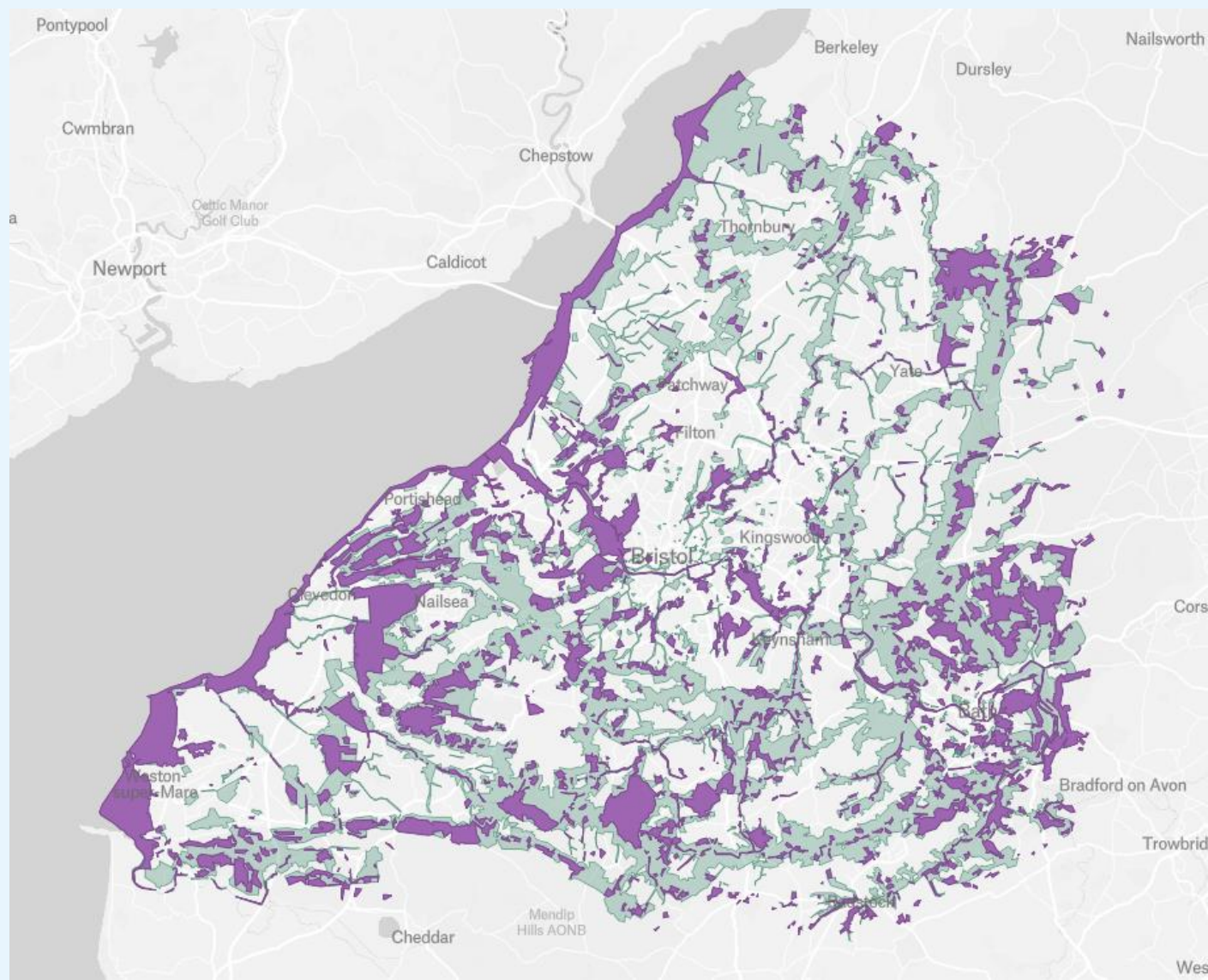
WENP Nature Recovery Ambitions adjusted for B&NES

B&NES covers 26% of the West of England area

Current situation:	By 2030 we want to:	By 2050 we want to:
 Requires further investigation	 increase the abundance of priority species from 2020 levels by 30%	 Double the abundance of priority species from 2020 levels
 Tree Canopy cover of 5,440 ha (woodland cover of 2,892 ha) ¹	 increase our semi-natural broadleaved tree and woodland cover by 650 ha	 increase our semi-natural broadleaved tree and woodland cover by 2,080 ha
 2,556 ha of Priority Habitats ²	 In addition to woodland, create 520 ha of wildlife-rich habitat outside of the protected site network	 In addition to woodland, create 1,560 ha of wildlife-rich habitat outside of the protected site network
 19 'gaps' (or connectivity opportunities) in the Ecological Network within B&NES ³	 Close at least 40% of the NRN connectivity gaps through the creation of new habitat	 Close all the NRN connectivity gaps through the creation of new habitat
 2 water bodies in good status; 12 in moderate status; 4 in poor status ⁴	 Ensure all water catchments are in at least moderate ecological status, with half in good ecological status	 Ensure all water catchments are in good ecological status
 54% of SSSI-sites in favourable condition ⁵	 Ensure 70% of designated sites are in favourable condition	 Ensure all designated sites are in favourable condition

Data sources: 1 Calculated using the Forest Research's Urban Canopy Cover Tool - Forest Research (2022) UK Urban Canopy Cover, <https://www.forestresearch.gov.uk/research/1-tree-eco/uk-urban-canopy-cover/>
 2 Calculated from Bristol Environmental Record Centre (BRERC) data - Bristol Environmental Record Centre (BRERC) (2021), Priority habitat mapping for the West of England, <https://www.brerc.org.uk/index.htm>
 3 West of England Nature Partnership (2022) Nature Recovery Network, <https://wenn.org.uk/nature-recovery-network/>
 4 A number of these sub-catchments are only partly in B&NES - Environment Agency (2022), WFD Classification Status Cycle 2 Ecological Status, <https://www.gov.uk/government/organisations/environment-agency>
 5 Natural England (2022), Designated Sites View, Condition of SSSI Units in County AVON, <https://designatedsites.naturalengland.org.uk/SearchCounty.aspx>

Upcoming: Nature Recovery Toolkit



Find out more

Bath & North East
Somerset Council

Improving People's Lives

<https://beta.bathnes.gov.uk/document-and-policy-library/local-nature-action-plans>