

Investing in Green Infrastructure and Nature Recovery

State of nature 2023

- One in six species at risk of being lost from Great Britain.
- On average the species studied have declined by 19% in the UK since 1970.
- Most of the important habitats for the UK's nature are in poor condition, but restoration projects can and do have clear benefits for nature and people, as well as climate change mitigation and adaptation.

More species have seen their populations decrease than increase

38% have decreased

34% little change

27% have increased

The abundance of 753 terrestrial and freshwater species has on average fallen by

19%



16% of species are threatened with extinction from Great Britain.
151 of 10,008 assessed have already become extinct.

We have seen big changes in where wildlife is found

The distributions of half of flowering plant species have decreased across Great Britain

54%



The distributions of invertebrates have on average decreased across the UK

13%



Stronger declines in some insect groups which provide key ecosystem functions such as

Pest control

34%

Pollination

18%



Insects that help keep a healthy balance of nutrients in rivers and ponds initially declined before showing a rapid recovery that has since slowed



The greatest drivers of change over the last 50 years

On land and in freshwater:

- Agricultural management
- Climate change



At sea and around our coasts:

- Unsustainable fishing
- Climate change
- Marine development

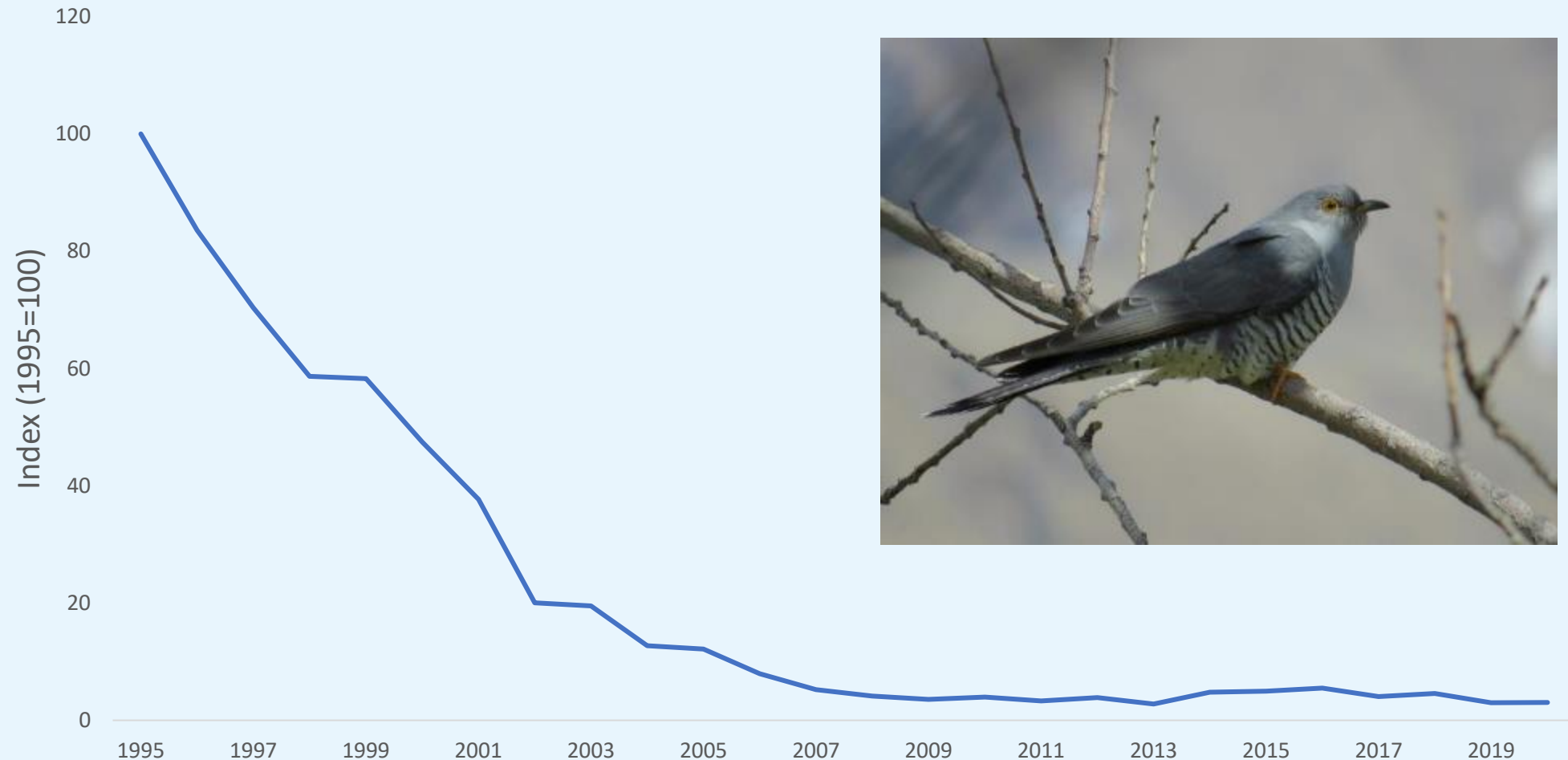


These drivers continue from centuries of habitat loss, development and persecution.

The UK is one of the most nature depleted countries on Earth.

Background

Relative abundance of cuckoo in the WoE, 1995-2020



Background

2030 timeline for change

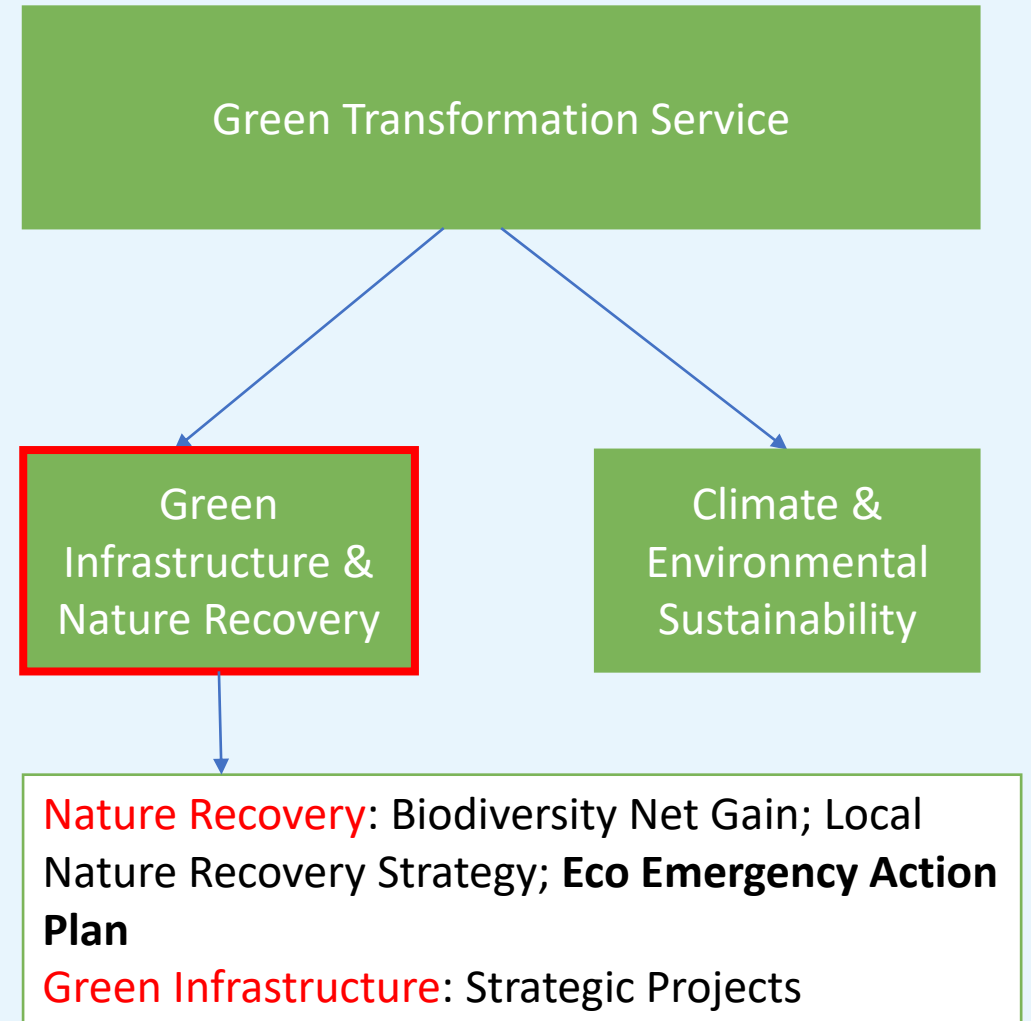
Corporate Strategy 2020-24

Two core policies:

Tackling the climate and nature emergencies

Giving people a bigger say

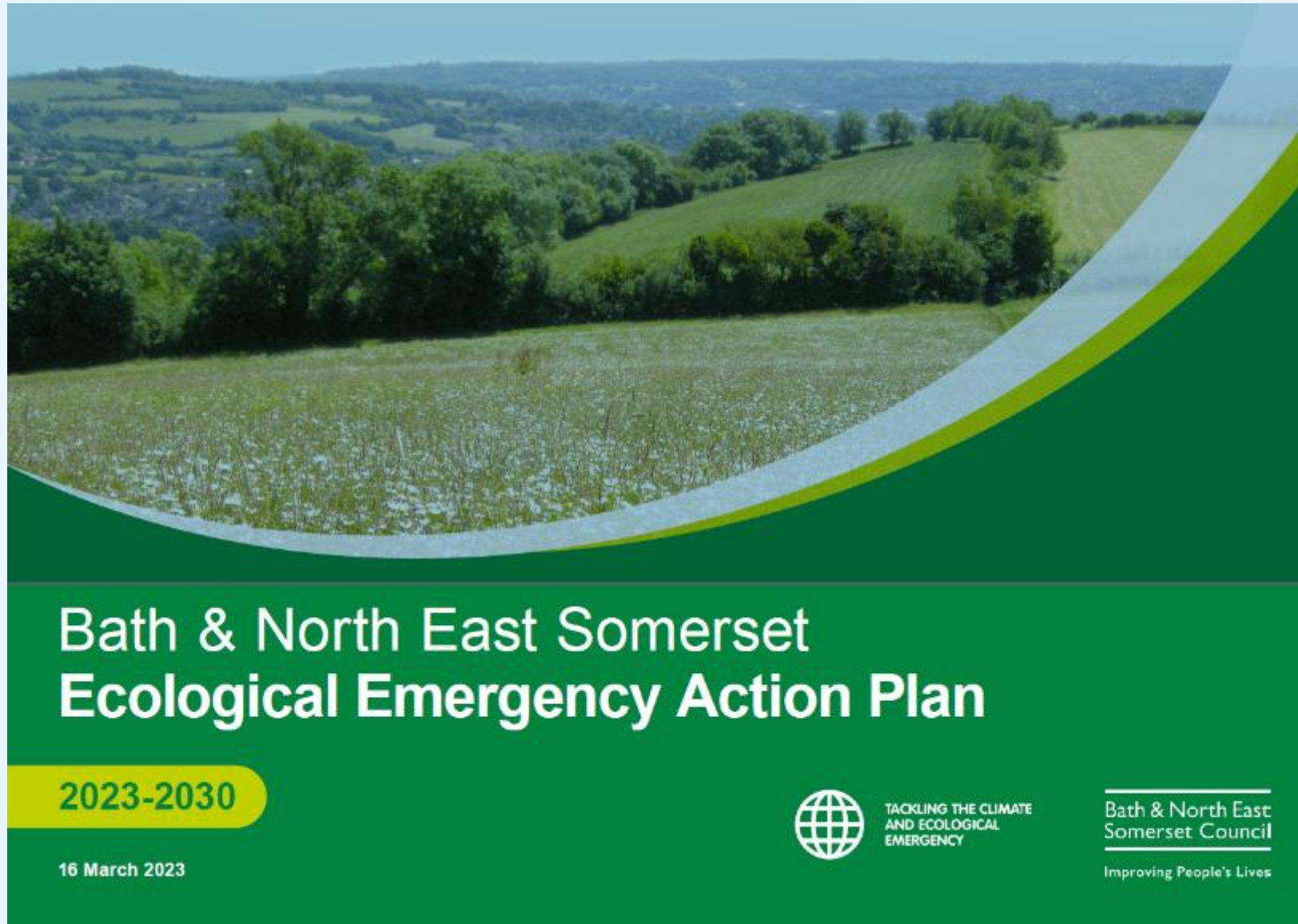
Declaration of Ecological Emergency in July 2020



Ecological Emergency Action Plan

Bath & North East
Somerset Council

Improving People's Lives



Bath & North East Somerset Ecological Emergency Action Plan

2023-2030

16 March 2023



TACKLING THE CLIMATE
AND ECOLOGICAL
EMERGENCY

Bath & North East
Somerset Council

Improving People's Lives

Opportunities



Carbon sequestration ✓



Health and Wellbeing ✓



Food security ✓



Green Jobs ✓



Reduced flood risk ✓



Improved water quality ✓

Vision and Priorities

Nature Positive by 2030



Increase the extent of land and waterways managed positively for nature across B&NES



Increase the abundance and distribution of key species across B&NES



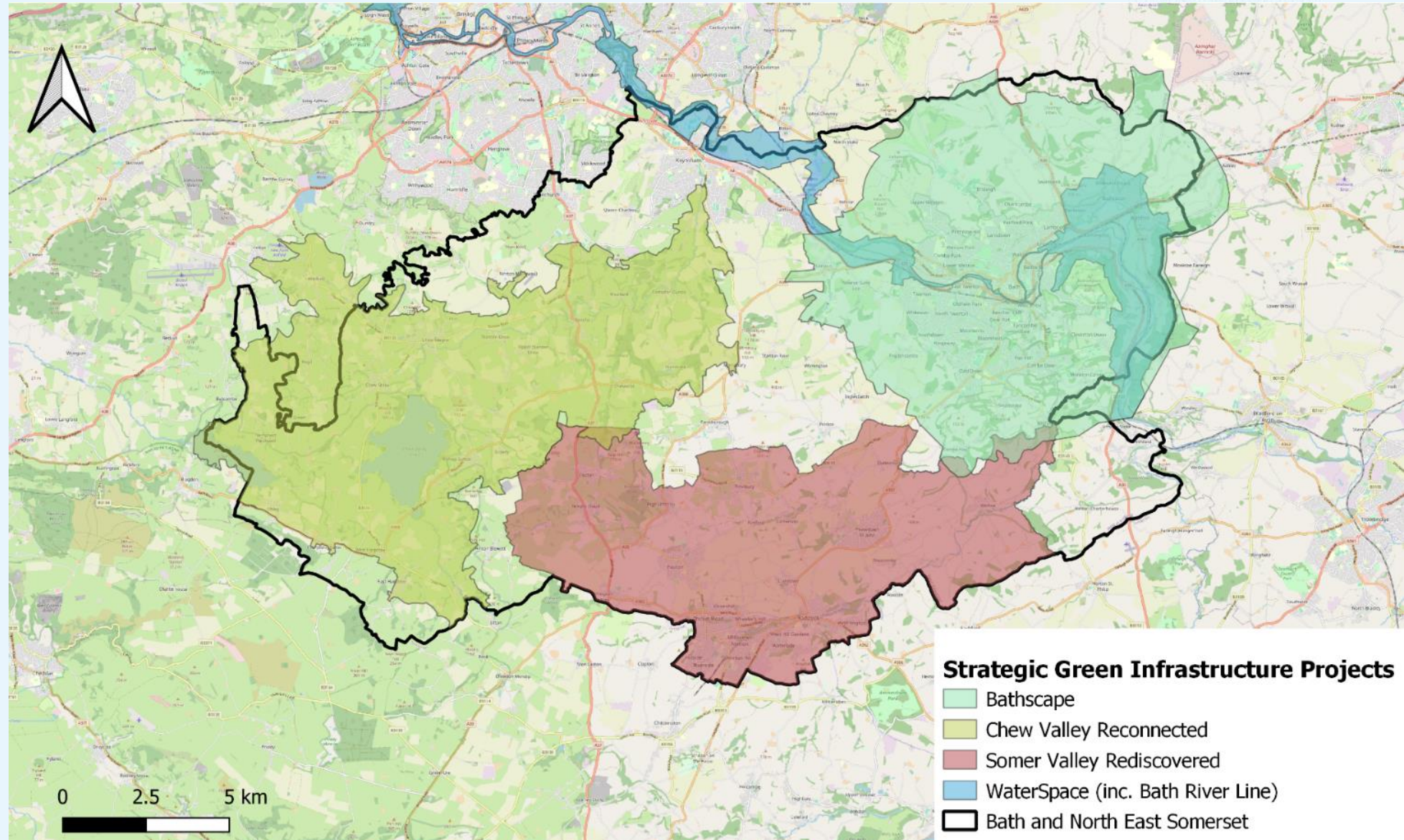
Enable more people to access and engage with nature

Green Infrastructure Projects

Bath & North East
Somerset Council

Improving People's Lives

Delivering
for nature
and
people





Keynsham Area Forum
September 2023



WATERSPACE CONNECTED



FOUR OVERARCHING THEMES



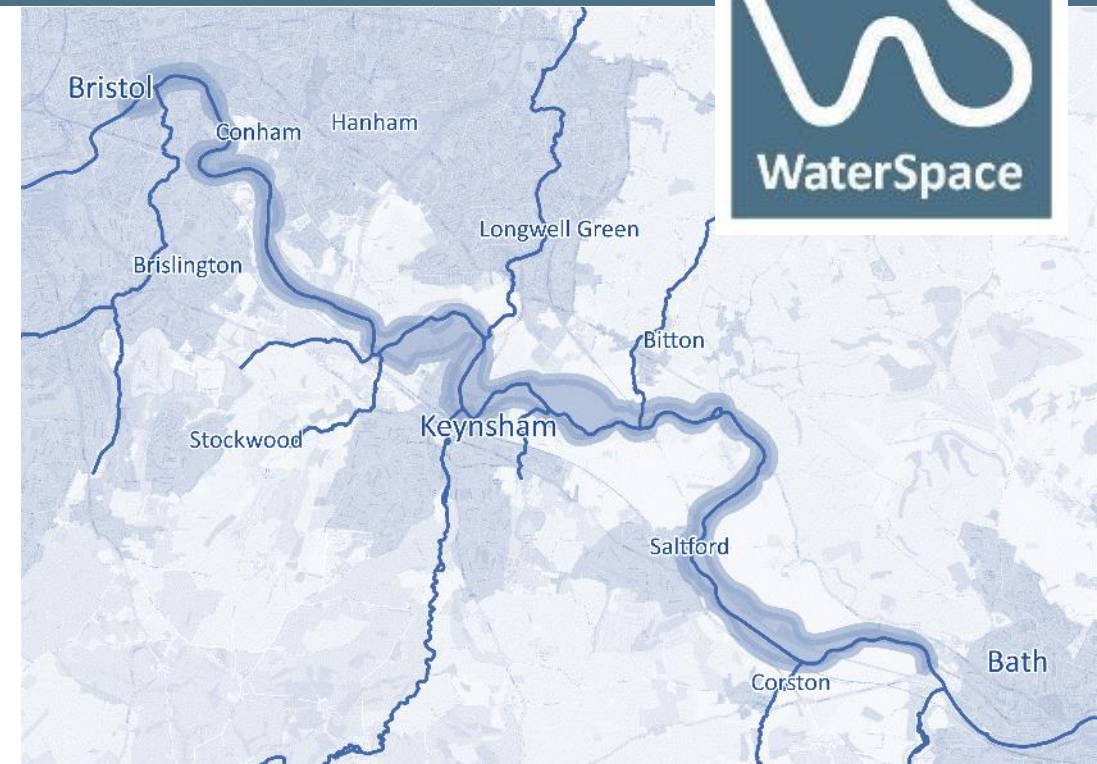
Environment: A healthy, vibrant river valley rich in nature

Community: Accessible natural, cultural and heritage services and a local sense of place



Transport: A continuous greenway and recreational route in nature, connecting Bristol and Bath

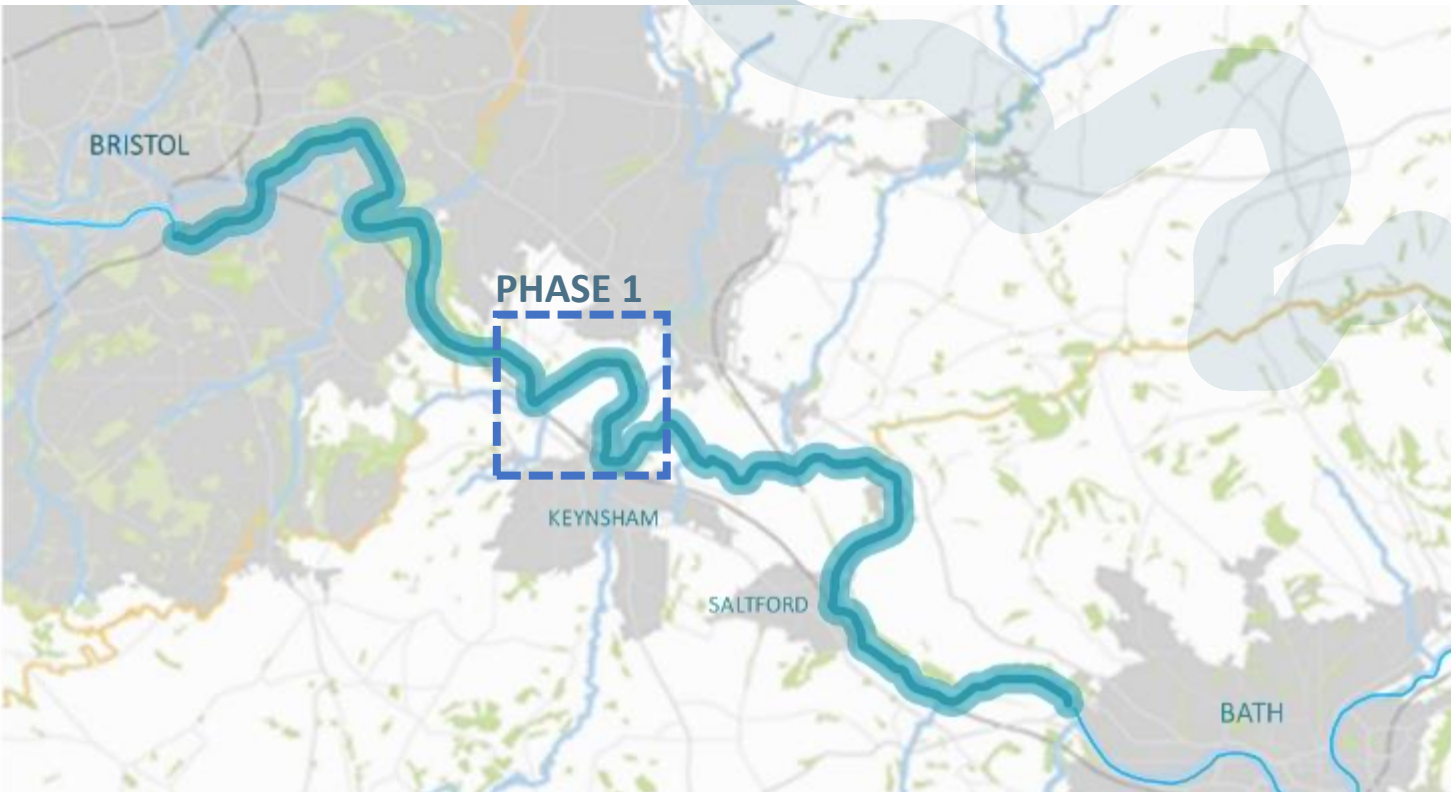
Economy: A rich natural asset that supports local economies to thrive





SOMERDALE PHASE

Funding from WECA granted for Phase 1 development, focused on the River Avon North of Keynsham



DEVELOPMENT

1

Design and deliver an accessible **footbridge** at Somerdale, connecting Keynsham to Hanham, and linking to Bristol.

2

Upgrade the path and associated infrastructure to enable more people to **access** the greenway.

3

Enhance existing **connections** and create new connections through improved routes and wayfinding.

4

Create a **River Park** at Somerdale, a nature-rich publicly accessible space.

5

Deliver a suite of **ecological enhancements** within the river, riparian edge, and adjacent land, through partnerships and landowner advice.



SOMERDALE BRIDGE

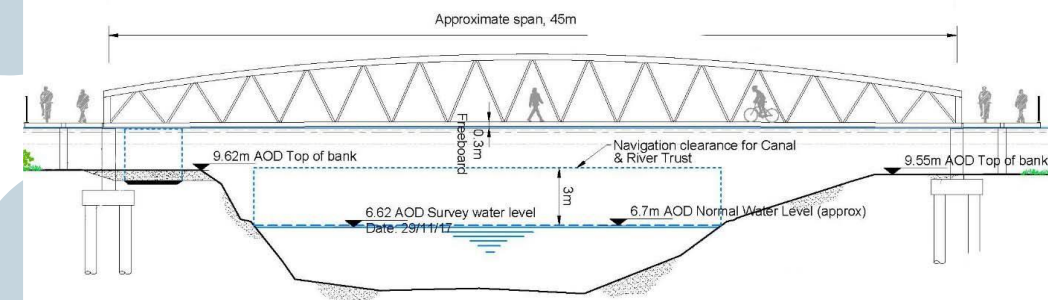
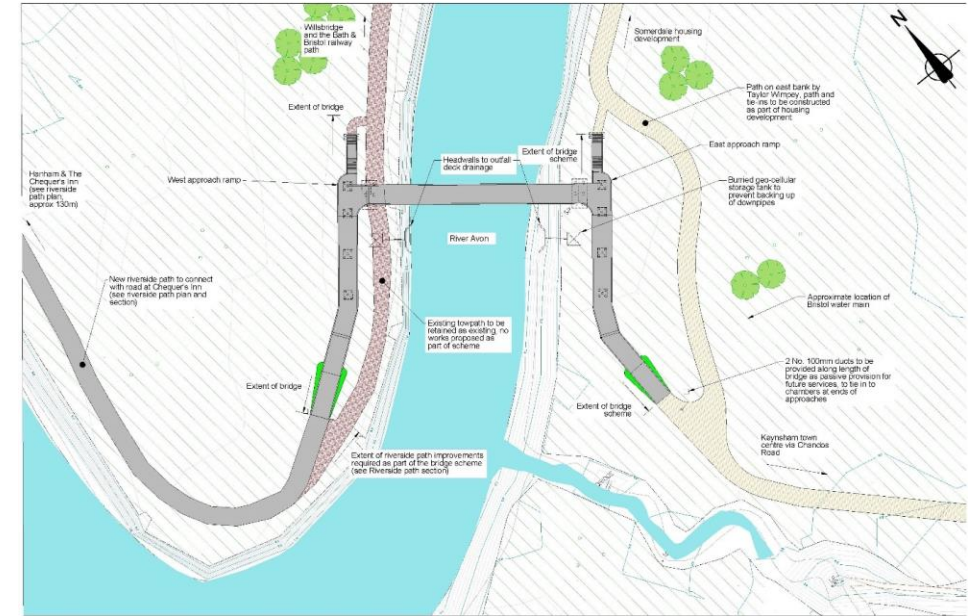
Bath & North East
Somerset Council

South Gloucestershire
Council

WEST OF
ENGLAND
Combined Authority

- Accessible walking, cycling and wheeling bridge over the River Avon
- Key links to the River Avon Trail
- Working with South Glos Council to improve onwards connections

Next steps – procure design and engineering team, apply for planning, community consultation. Apply for full funding Nov 24.



SOMERDALE 'RIVER PARK'

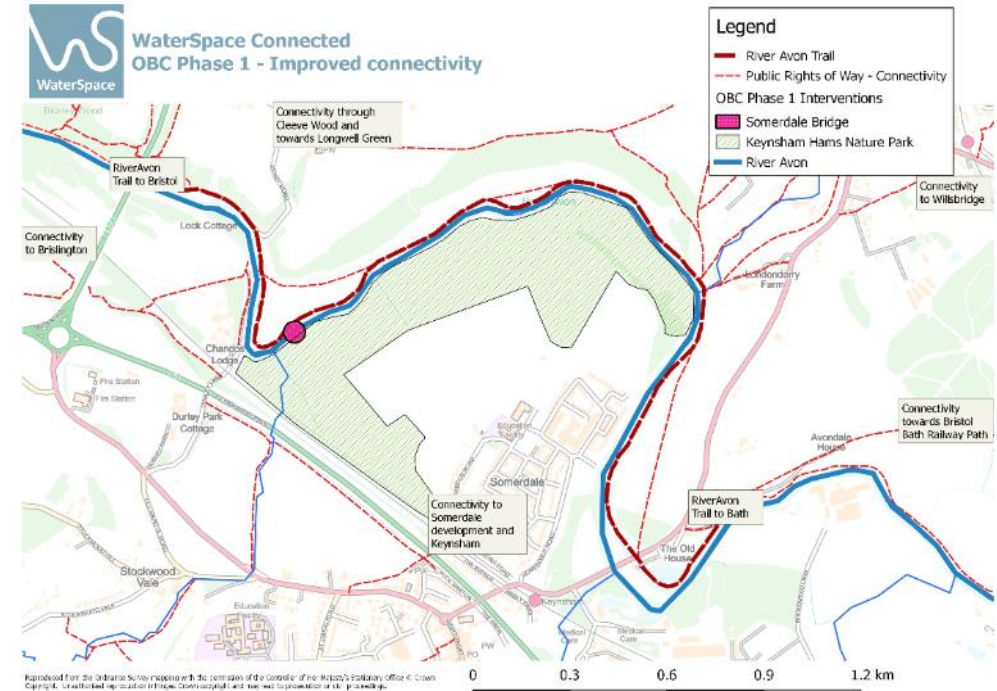
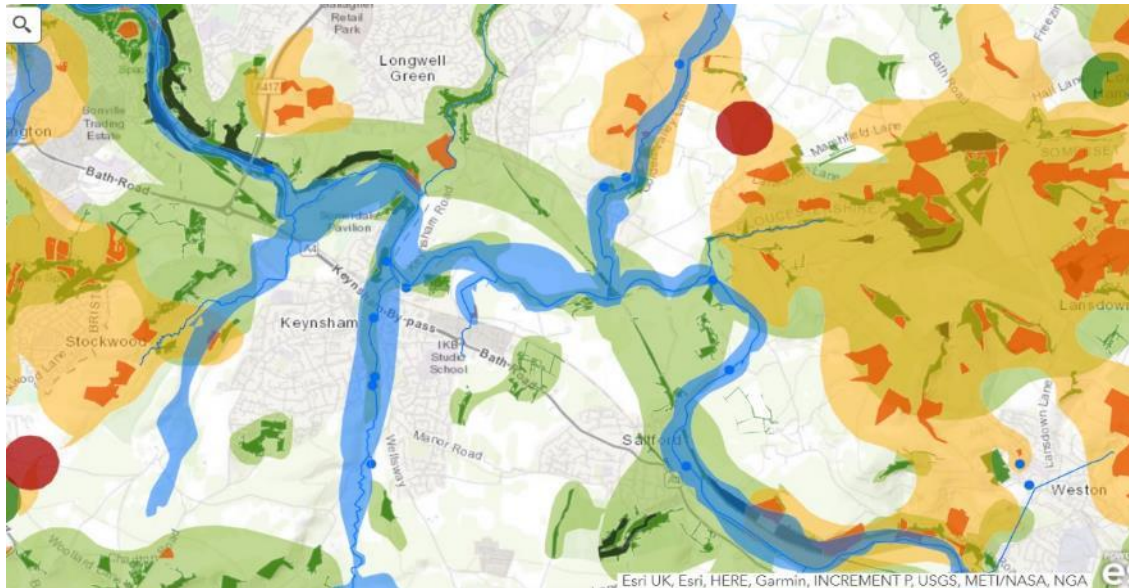
- Improving biodiversity
- Creation of wetland mosaic habitat
- Enabling people to access nature – boardwalks, accessibility, etc.
- Nature based solutions (phosphates, slow the flow)
- Signage and interpretation



**Taylor
Wimpey**

LANDOWNER ADVICE & CONNECTIONS

Providing grants to landowners to improve water quality, access, biodiversity, NBS, improve infrastructure



Improve, enhance and create connections to and along the river.
River Avon Trail audit



Chew Valley Reconnected





Thanks for listening!

Bath & North East
Somerset Council



@WaterSpaceBath



Riveravon@bathnes.gov.uk