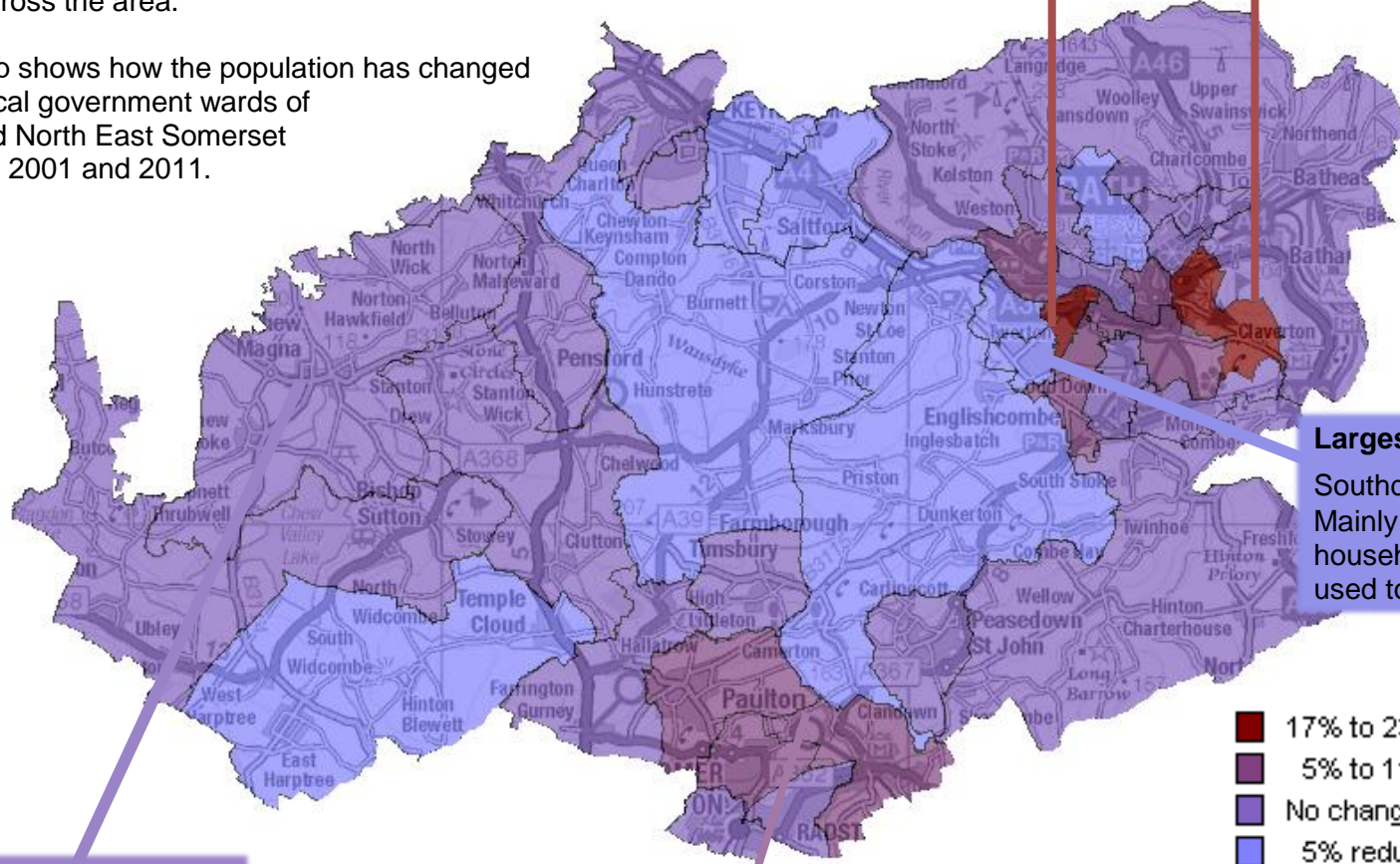


2011 Census in Bath and North East Somerset: Behind the data - Population Change

We know there were 6,800 more people living in B&NES in 2011 than there were in 2001, but that increase wasn't the same across the area.

This map shows how the population has changed in the local government wards of Bath and North East Somerset between 2001 and 2011.

Biggest Increase
 Westmoreland ▲ **23%**, 1,200 more people,
 Bathwick ▲ **19%** 780 more people
 Mainly down to the growth in the student population



Largest Reduction
 Southdown ▼ **6%**, 335 fewer people
 Mainly down to there being more households without children than there used to be

- 17% to 23% Growth (2)
- 5% to 11% Growth (8)
- No change to 5% Growth (19)
- 5% reduction to No change (8)

Most Aged
 Chew Valley North 75+
 ▲ **48%** to 242 people

Most New Homes
 Midsomer Norton North,
 ▲ **12%**, 271 more houses

Find out more about Bath and North East Somerset at www.bathnes.gov.uk/jsna
research@bathnes.gov.uk