



Water resources and community resilience

Bristol Avon Rivers Trust - BART

- One of 65 Rivers Trusts across the UK
- BART strive to conserve and enhance the health of our rivers for current and future generations
- The Chew catchment is one of BART's focal areas



Water Resources Project

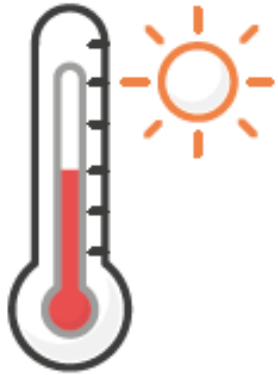
- Focused in the Chew and Congresbury Yeo catchments
- Aims
 - To increase awareness of water resource pressures to local communities.
 - Support communities and landowners in taking action to become more water resilient.



**Catchment
Based Approach**

Water Resources: the issues

By 2050:



Average daily temperatures
could increase up to 18°C.

AN INCREASE OF 2.2°C.



Average summer daily temperatures
could increase to 23°C.

AN INCREASE OF 3°C.

We can expect much drier summers



Rainfall in the region

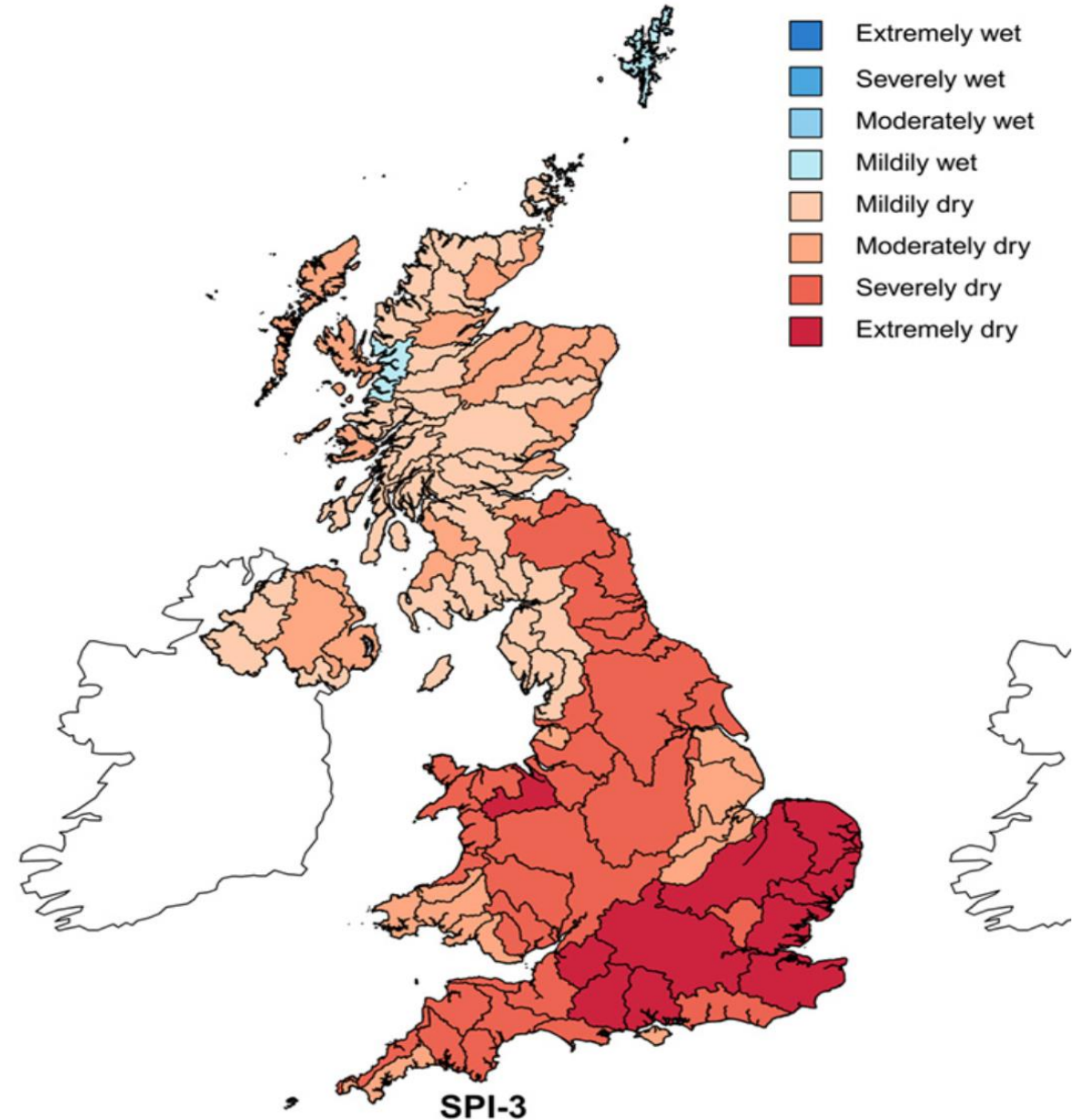
**WILL BECOME
MUCH MORE**

variable

With tens of thousands of extra people

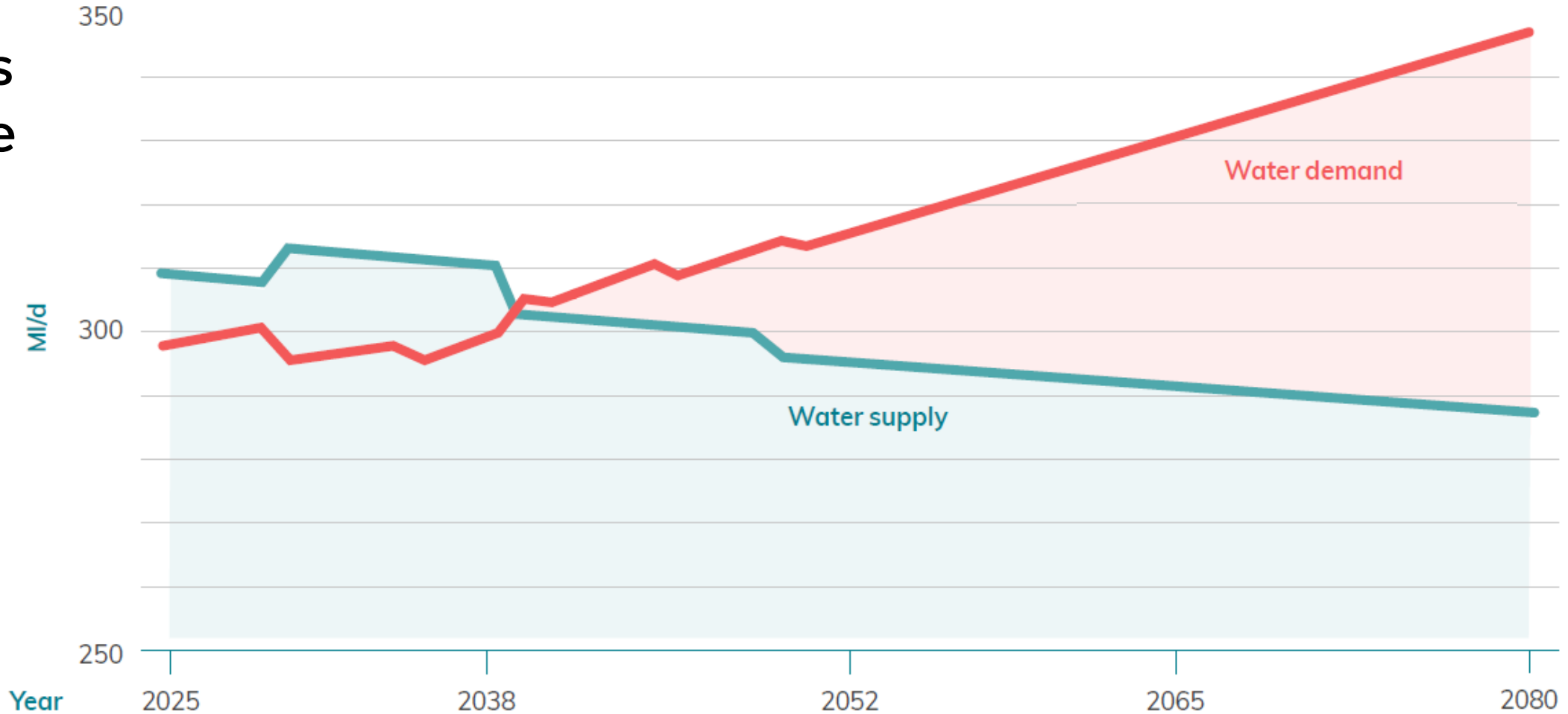
Water Resources: the issues

- Climate change and population growth mean that by 2050 around 4 billion extra litres of water will be needed every day in England.
- By the end of summer 2022, daily river flows were among the lowest ever recorded for some catchments in southern and eastern England.



Water Resources: the issues

business as
usual in the
Bristol
Water
region



Water Resources: low river levels

Water
temperature
increases

Many species
cannot adapt

Oxygen
levels
decrease

Dry
riverbeds

Fewer
deep pools

Reduced
flow
speed

Pollution
less
diluted



Water Resources: solutions

Communities need support to:

- become informed about water resources issues
- use less water in their homes
- install and develop sustainable drainage systems

Water Resources: supporting communities

Informing communities.

We face
water
shortages if
we do not
take action.

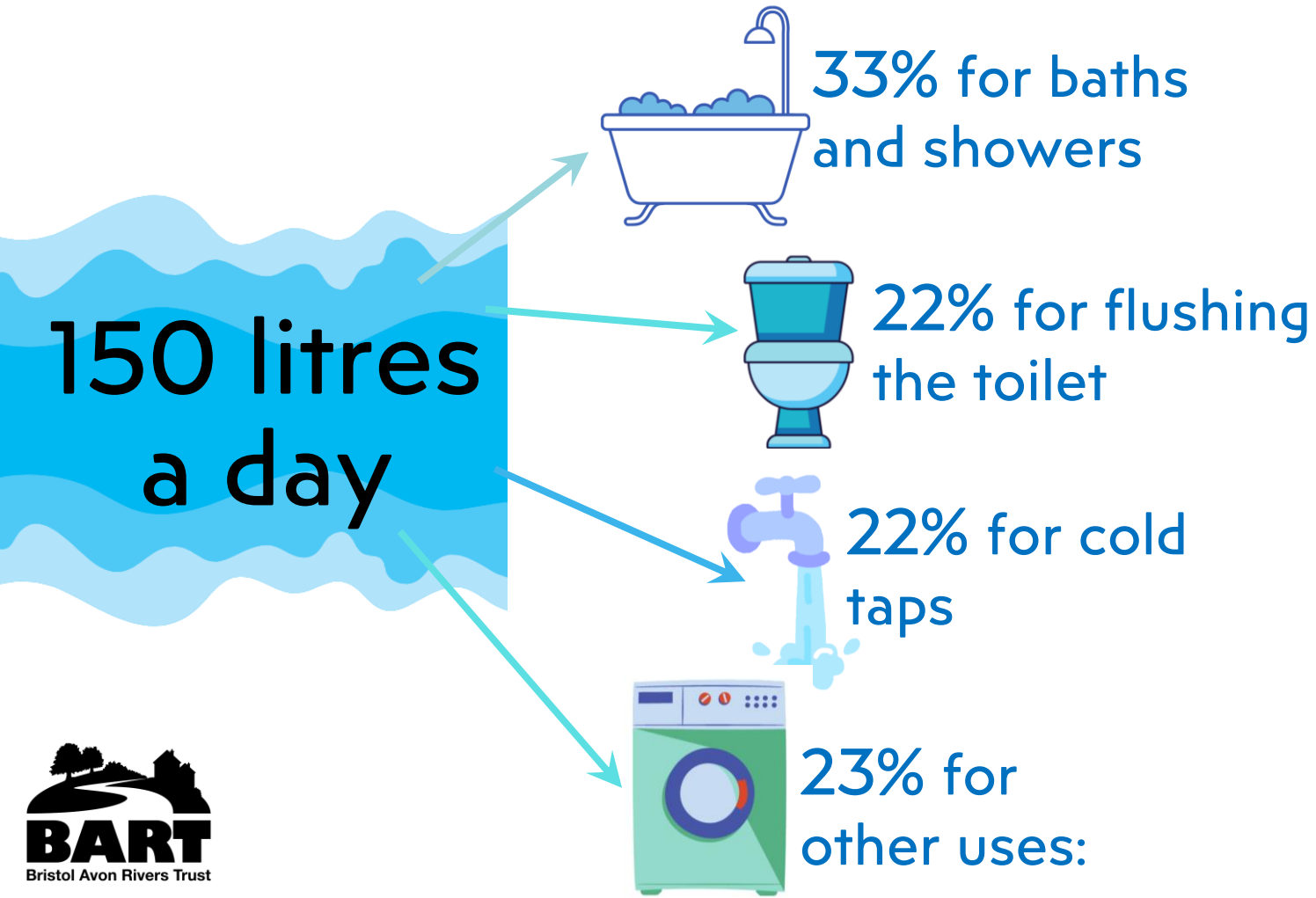
The more
water people
use, the less
there is for
wildlife.

People use
150 litres
of water
every day.

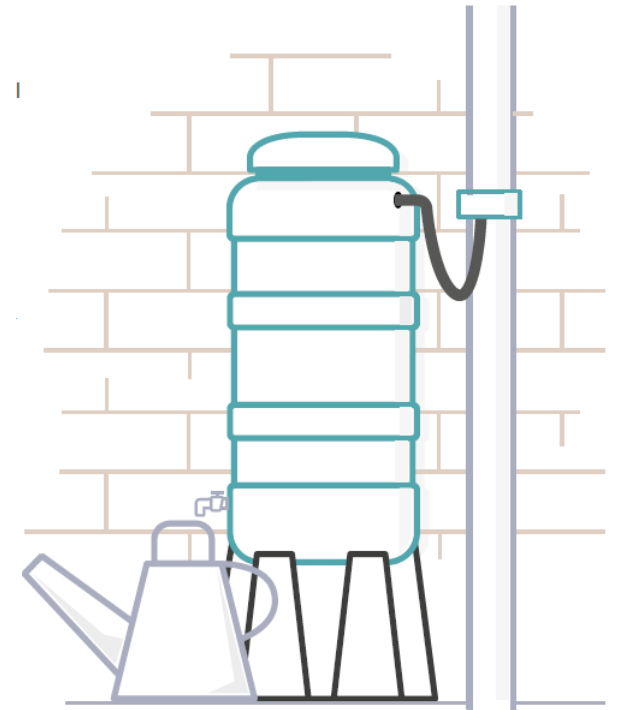
2050
target:
110 litres.

Water Resources: supporting communities

Using less water at home.

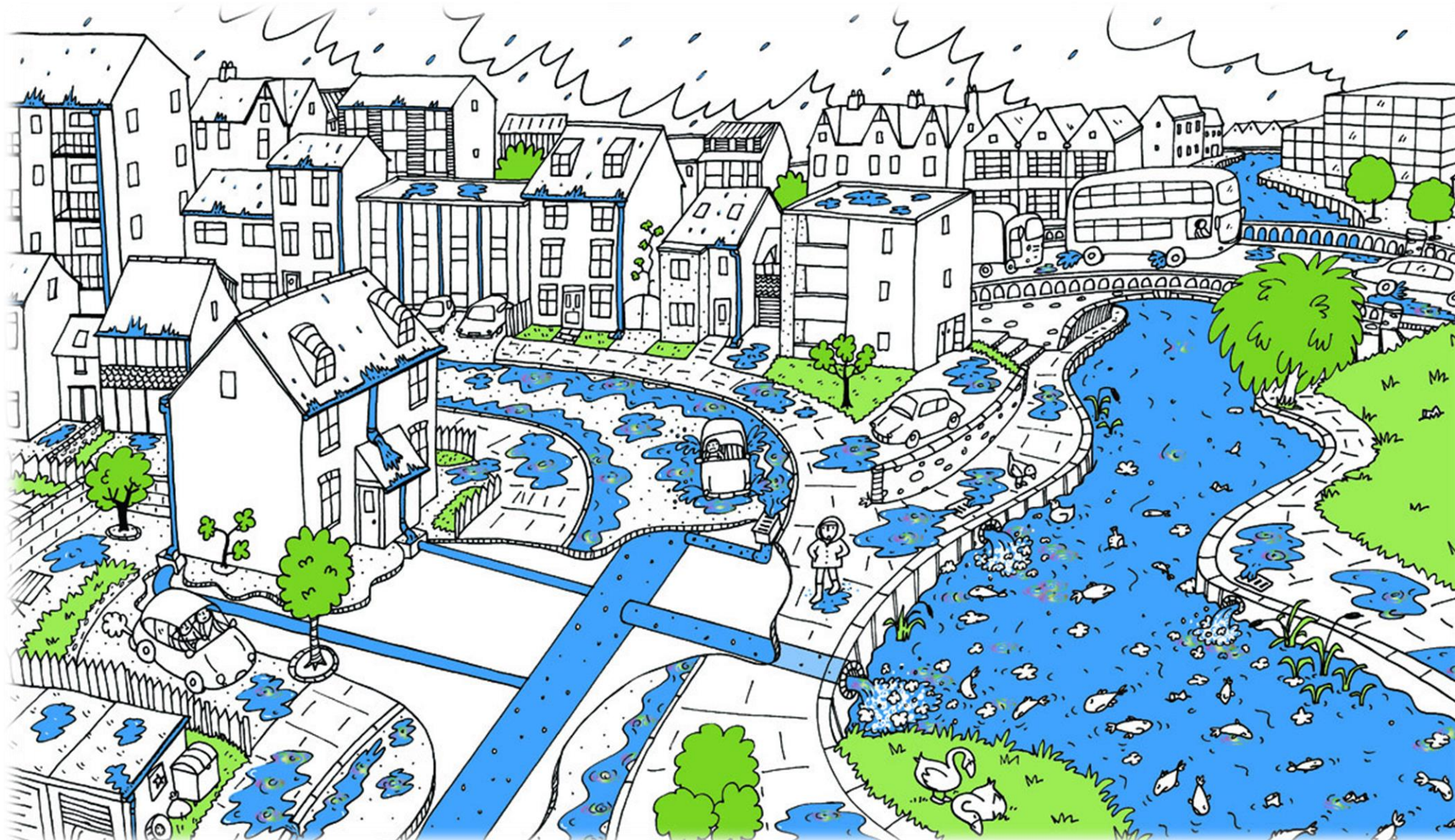


water butts can save many litres



Water Resources: supporting communities

Developing
sustainable
drainage
systems



Water Resources: supporting communities

Developing
sustainable
drainage
systems



Water Resources and community resilience

- Water is a limited resource we must share with nature
- Communities need support to become more water resilient
- We must work together to better manage water for people and for wildlife



Any questions?