

Your Local Council Tax Guide

2022 - 2023



**TACKLING THE CLIMATE &
ECOLOGICAL EMERGENCY**



GIVING PEOPLE A BIGGER SAY



DELIVERING FOR LOCAL RESIDENTS



FOCUSING ON PREVENTION



PREPARING FOR THE FUTURE

Message from the Leader



We do still face significant financial challenges due to the ongoing impact of the pandemic, an increase in demand for services, particularly in Adult and Children's Social Care, recruitment and supply chain issues, as well as inflationary pressures. However, by making savings and thinking differently about the way we deliver services we've been able to set a budget which invests for the future, delivers on our priorities and will improve the lives of residents.

We appreciate the impact the rising cost of living is having on many people but have had to raise Council Tax to protect frontline services, especially for our most vulnerable, and to balance our finances.

This year your Council Tax has risen by 1.99% and the adult social care portion of your bill has risen by 1%. This represents a total increase of £45.73 (88p per week) for a Band D property.

Last year we set up a pilot scheme for residents to support local community projects through voluntary contributions. You generously donated more than £25,000 to the Community Contribution Fund to support local charities, community and voluntary groups tackling inequalities in our area. Thank you.

As the scheme proved such a success, we're running it again this year. Contributions are optional but if you'd like to donate or need more information, please visit: www.bathnes.gov.uk/communitycontribution

This is your council and we're committed to giving you a bigger say in what the council does and how we spend your Council Tax money. Over the past two years hundreds of people have taken part in our online consultations and webinars. They are your chance to have your say on the issues that matter to you and I can assure you we listen very carefully to your views before making our decisions.

You'll find details of how to get involved in this leaflet.

Councillor Kevin Guy,
Leader of Bath & North East Somerset Council

Welcome to this year's guide to your local council's spending. This explains how we work out your Council Tax and how your money is spent.

It outlines Bath & North East Somerset Council's spending plans together with the charges for town and parish councils, the police and fire services and includes the Environment Agency's levy for flood protection.

This year we're investing tens of millions of pounds to improve people's lives.

One of our key aims is to tackle the housing crisis and I'm proud to say that, for the first time in a generation, we'll be delivering new council houses to provide badly needed affordable homes for rent for residents.

Additional funding is being allocated to the Climate Emergency and Neighbourhood Services. It will enable us to modernise our waste operations, providing a new state-of-the-art Recycling Hub in Keynsham, expand our recycling teams to cope with the significant increase in kerbside and green waste being recycled by residents and clean our streets more frequently.

We're also continuing to invest in sustainable transport, making it easier and safer for people to walk and cycle, and over the next twelve months we'll be working with local communities to progress our first tranche of Liveable Neighbourhood schemes.

Our focus this year is to improve people's lives by tackling the housing crisis, investing in sustainable transport, providing better recycling facilities and enhancing our environment

Additional investment includes:

£16m + to provide new social and affordable housing, including:

- delivering the first new council homes in a generation
- providing new affordable housing

£10m + to improve transport, including:

- helping to create a joined up sustainable transport network with match funding for the City Region Sustainable Transport Settlement including investment in buses
- creating new footpaths and cycleways to encourage active travel
- improving road safety
- maintaining our roads

£27m + is also planned over the next five years to address the Climate and Ecological Emergency, including:

- additional investment in the state-of-the-art Recycling Hub we're building at Keynsham
- modernising waste services to further improve recycling rates
- expanding the council's green vehicle fleet
- addressing the repair backlog in our commercial estate and planning energy efficiency improvements
- enhancing our Green Infrastructure and creating a Nature Recovery and Delivery Plan



What is Council Tax?

Council Tax is a property tax levy by local councils. It pays for local services provided by the council including education, highways, social care, public health, libraries, schools, recycling and waste collections, street lights and much more. The money you pay also funds the police and fire and rescue service and supports the work of parish and town councils.

Who pays Council Tax?

You'll usually have to pay Council Tax if you're 18 or over and own or rent a home. A full Council Tax bill is based on at least two adults living in a home. Spouses and partners who live together are jointly responsible for paying the bill.

How much will I pay?

Council Tax is charged on the household. The amount of Council Tax you pay depends on which property band your house is in and whether you are entitled to an exemption or discount.

Long-term empty properties

To encourage the owners of long-term empty properties to bring them back into use the council charges an additional levy for these properties. If a property has been empty and unfurnished for between two and five years the owner is charged an extra 100% Council Tax on top of the normal 100% Council Tax. Owners of homes that have been empty and unfurnished for five years or more, pay an additional 200% on top of their normal 100% Council Tax charge. Owners of homes that have been empty and unfurnished for ten years or more, pay an additional 300% on top of their normal 100% Council Tax charge.

Council Tax discounts

Your Council Tax bill is based on two or more adults living in a property. If you are the only adult living in your home, your bill may be reduced by 25%.

A discount may also apply if someone who lives with you is:

- a full-time student
- in prison
- a person who is severely mentally impaired
- a care leaver aged between 18 and 25
- a care worker, depending on certain conditions
- an 18-19 year old school leaver
- a religious community member
- a member of visiting armed forces

Foster carers & care leavers

If you are a foster carer, resident in B&NES and employed by Bath & North East Somerset Council, you may be entitled to a reduction. If you are a care leaver aged 18-25 you may be entitled to a reduction.

Family annexes

If you have an annexe which is lived in by a family member, you may be entitled to 50% discount for that annexe. The discount does not apply if a non-family member occupies the annexe.

Exemptions

Some properties are classed as exempt which means you will not have to pay any Council Tax. For example, properties occupied wholly by students or a property left empty following the death of a resident.

Reductions for people with disabilities

If you, or someone who lives with you needs extra space in your property to meet the special needs arising from a disability you might qualify for a reduction.

On a low income?

If you're on a low income, you might be entitled to some help towards paying your Council Tax. To apply, you'll need to give us information about your income and any savings, and details about who lives with you. If you're in receipt of Universal Credit, we'll use the information held on your Universal Credit claim to calculate the amount of Council Tax Support you are entitled to.

Further information visit:

www.bathnes.gov.uk/benefits

What if my circumstances change?

If you receive a discount, exemption or Council Tax Support, any change in your circumstances, including moving out of the property, could affect your entitlement. You have a legal duty to tell us within 21 days or you may incur a penalty charge. The council is under a duty to protect the public funds it administers and may use the information you provide for the prevention and detection of fraud. It may also share this information with other bodies responsible for auditing or administering public funds for these purposes.

For further information on all reductions available visit:

www.bathnes.gov.uk/counciltax

Your Council Tax bill explained

Please Note: This is a fictitious Council Tax bill made up for explanatory purposes

This is the number you need to quote when making a payment or contacting us about your Council Tax account

Name of liable person(s)

Contact address

Address this bill relates to

Charge for the year

Details of any exemptions or discounts you are receiving

Dates of instalments

Notes to inform you of any credits or debit from previous financial years

The general charge by the council - this is the amount which the council needs to raise from the council tax in order to provide its main services

Charge set by the council to assist it in meeting expenditure on adult social care

Charge set by a parish or town council - if you live in a parish or town area, your parish or town council may issue an amount to finance its expenditure

Charge set by Avon & Somerset Police

Charge set by Avon Fire Authority


Refer to enclosed leaflet provided with your annual bill

Bath & North East Somerset Council
Improving People's Lives

Council Tax Account Number:

Council Tax Bill 2022-2023

Access your account 24/7
www.bathnes.gov.uk/account

Online Key: 

For further information see overleaf

Council Tax Band: B

Date: 09-MAR-2022

Bill Address:

Your Bill

Reason for bill: Annual

Charge For Period	01-APR-2022 to 31-MAR-2023	BAND B	1556.58
Second Home	01-APR-2022 to 31-MAR-2023		0.00
TOTAL AMOUNT DUE £			1556.58

Your Payments

Instalments to be paid by: Direct Debit payments Monthly

Instalments due £:					
01-APR-2022	152.58	01-AUG-2022	156.00	01-DEC-2022	156.00
01-MAY-2022	156.00	01-SEP-2022	156.00	01-JAN-2023	156.00
01-JUN-2022	156.00	01-OCT-2022	156.00		
01-JUL-2022	156.00	01-NOV-2022	156.00		

How we calculate your bill

	Amount	% Change
Bath & North East Somerset Council	1079.23	2.0
Social Care Charge*	145.99	1.0
Town/Parish of Keynsham	75.35	2.0
Avon & Somerset Police	195.38	4.1
Avon Fire Authority	60.63	2.0
Total Council Tax for band	1556.58	3.0

* The Council Tax attributable to Bath & North East Somerset includes a precept to fund adult social care. For more information please visit www.bathnes.gov.uk/ctaxguide

The Government is providing a £150 one-off Energy Bills Rebate for most households in Council Tax bands A-D

Access code to set up your online Council Tax account

The Council Tax Band for your property which is set by the Valuation Office Agency

Date your Council Tax bill was issued

Address of property if different from billing address

The adjustments made as a result of any exemptions or discounts

Total amount payable

Method of payment

Dates of instalments and amounts due

For adult social care authorities, council tax bills show two percentage changes: one for the part of the overall change attributable to the adult social care precept, and one for the part attributable to general expenditure.

Total due for the year before any reductions for discounts or exemptions

Paying your Council Tax

Direct Debit

This is the quickest and safest way to pay your Council Tax - over 75% of B&NES residents have already made the switch.

To set up a Direct Debit please go to: www.bathnes.gov.uk/pay

Online

Pay by debit or credit card 24 hours a day, seven days a week either online at www.bathnes.gov.uk/pay or by telephone on 0300 456 0632. We don't accept American Express.

Online banking

Faster Payments or BACS. You must quote your Council Tax Account Number as the payment reference. If you don't, your payment may not reach your account.

Sort Code: 56 00 34

Account Number: 57134510

Account Name: Bath & North East Somerset Council

For all other methods of payments please visit www.bathnes.gov.uk/pay

Pay over 12 months

If you haven't already asked us to spread your instalments over 12 months, your annual bill (issued in March) will show 10 instalments (April to January). If you would like to spread your instalments over 12 months, please contact us. We'll recalculate your bill to spread out the future instalments as much as possible, up to next March.

Problems paying?

If you're struggling to pay please contact us to discuss your options visit: www.bathnes.gov.uk/contactus

Council Tax liability appeals

By law, you must continue to pay your Council Tax as normal until your appeal has been resolved. You can appeal your Council Tax if you think that:

- we have made a mistake in the calculation of your bill
- you think that you are not liable to pay the bill

To appeal please contact Council Tax: www.bathnes.gov.uk/contactus

Council Tax banding appeals

If you think your house is in an incorrect Council Tax band you should contact the Valuation Office Agency: www.gov.uk/government/organizations/valuation-office-agency Full details of Council Tax banding are available by visiting: www.bathnes.gov.uk/ctax-bands

Switch to paperless billing

You can switch to paperless billing at www.bathnes.gov.uk/ctaccount

You'll be able to:

- Access your Council Tax account anytime, anywhere
- View and make payments, including Direct Debit
- Change your address online
- Apply for discounts and exemptions



Living within our means – delivering value for money

The following information shows where every £1 of Bath & North East Somerset Council's Council Tax is spent. This is based on net spend after deducting income generated by services and grants including the Dedicated Schools Grant.

Adult Social Services 48.9p

Each year adult social services supports approximately 2,500 individuals with care packages in their own homes and in care home placements. 1,400 people are enabled to access a personal budget to give them choice over their care package and how this is provided. The council also directly runs three residential care homes and five extra care housing schemes. We also provide home improvement services, including adaptations (eg a downstairs toilet and level access shower) and aids (eg handrails) to enable people to continue to live as independently as possible in their own homes.

Refuse Collection & Disposal 12.1p

We provide one of the most comprehensive weekly kerbside recycling collections in the UK, collecting a wide range of recyclable materials including food, glass, paper, cardboard, plastics, and small electricals from households. We collect rubbish every other week from the majority of households and provide a fortnightly collection of garden waste (for a charge). We operate three recycling centres and 200 communal mini recycling centres for flats. We also provide a trade waste collection, recycling and disposal service. In 2021/22 we sent for re-use, recycling or composting approximately 60% of all the household waste we dealt with.

Housing & Public Protection 5.6p

Each year our Housing team assists around 2,500 households and allocates approximately 600 social housing lettings. Over the past year we have prevented more than 600 cases of homelessness and improved 312 properties. We have also delivered 2015 affordable homes since 2011. Our Public Protection teams play a vital role in encouraging economic prosperity and community wellbeing by the provision of advice, education and enforcement of appropriate environmental and consumer legislation.

Children's Services 27.4p

The council ensures school places for around 25,000 pupils in 81 schools and academies locally and funds home to school transport and support services for schools. We assess, fund and commission a range of services to meet the needs of children and young people with SEND (special educational needs and disabilities). We also fund and provide children's centre services plus the full range of social care services- assessment, planning and intervention- for more than 1,000 of our most vulnerable young people and care leavers. We commission support services across the third and voluntary sector to support the council in meeting the needs of our most vulnerable children, young people and families. We've developed the care leaver exemption and foster carer discount.

Highways, Transport, Planning & Economic Development 8.8p

We are responsible for more than 1,100 kilometres of highway and ensuring our network keeps moving. We develop, maintain and improve highway infrastructure, deliver sustainable transport solutions, improve safety and manage public rights of way for all forms of transport. Each year we resurface miles of carriageway, ensure gullies are debris free, grit key routes across the district in the winter months and maintain traffic signals and streetlights. We also manage and enforce more 6,500 parking spaces and three Park & Ride sites as well as the first Clean Air Zone outside of London. We provide safe transport for over 2500 school children and work with our partners in the West of England Combined Authority to fund non-commercial bus services, community transport schemes and shared-taxi schemes.

We deal with around 1,200 building regulations applications and 2700 planning and listed building applications each year. We develop the sub-regional spatial plan and new local plans for the district. We promote the district as a great location for investment, encouraging regeneration and growth. We provide services to help people start and grow their business successfully and support residents to gain skills and progress their careers.

***The balance of -2.8p includes significant income relating to the Council's Commercial Estate and Heritage Services together with funding for services including libraries, cemeteries, recreation, tourism, cleansing and funding capital projects and charges.**



Spending

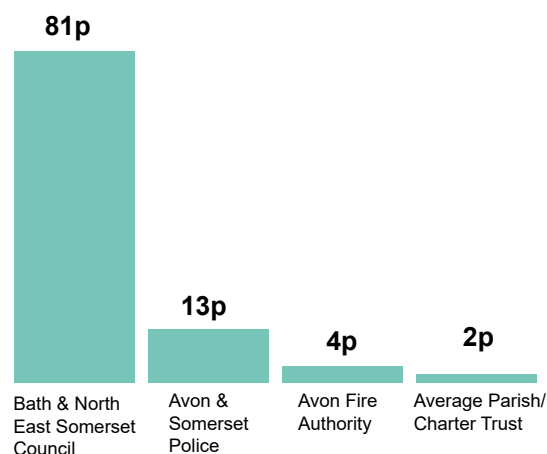
Bath & North East Somerset Council is required to set an annual balanced budget showing how its financial resources will be allocated and used over the coming year with regard to statutory services as well as key local priorities and objectives.

Why spending has increased/decreased

The council's net revenue budget after savings and income proposals has increased by £6.137m which represents a 4.7% increase in council spending power. After incorporating the one-off technical adjustment for the business rate relief compensation grant, the revised net budget has decreased by £3.328m to £126.774m.

	£m
Net Revenue Base Budget rolled forward 2022/23	130.072
Income Rebasing & Budget Pressures	3.518
Contractual and Unavoidable Inflation	7.061
Demographic Growth & Increases in Service Volumes	3.449
New Homes Bonus Grant Pressure	1.026
Other (including capital financing)	2.953
Total including Growth	148.079
Savings & Income Proposals	-11.870
Net budget after Savings & Income Proposals	136.209
Business Rate Relief Grant Adjustment	-9.465
Council's Net Revenue Budget 2022/23	126.744

Where each £1 raised of your Council Tax goes in 2022 - 2023



Summary of average Band D Council Tax charge

	Band D	% increase
Bath & North East Somerset	£1,387.59	1.99%
- Adult Social Care*	£187.71	1.00%
Avon & Somerset Police Authority	£251.20	4.15%
Avon Fire Authority	£77.95	1.99%
Average Parish	£45.30	2.58%
Overall Average Band D	£1,949.75	3.09%

(Figures shown are for at least a **two person** household)

The Council's Council Tax Requirement (excluding Police, Fire & Parishes) for 2022/23 is £106.890m and including Parishes is £109.964m.

* "The Secretary of State made an offer to adult social care authorities"¹.

The offer was the option of an adult social care authority being able to charge an additional "precept" on its council tax without holding a referendum, to assist the authority in meeting its expenditure on adult social care from the financial year 2016-17. It was originally made in respect of the financial years up to an including 2019-20. If the Secretary of State chooses to renew this offer in respect of a particular year, this is subject to the approval of the House of Commons.

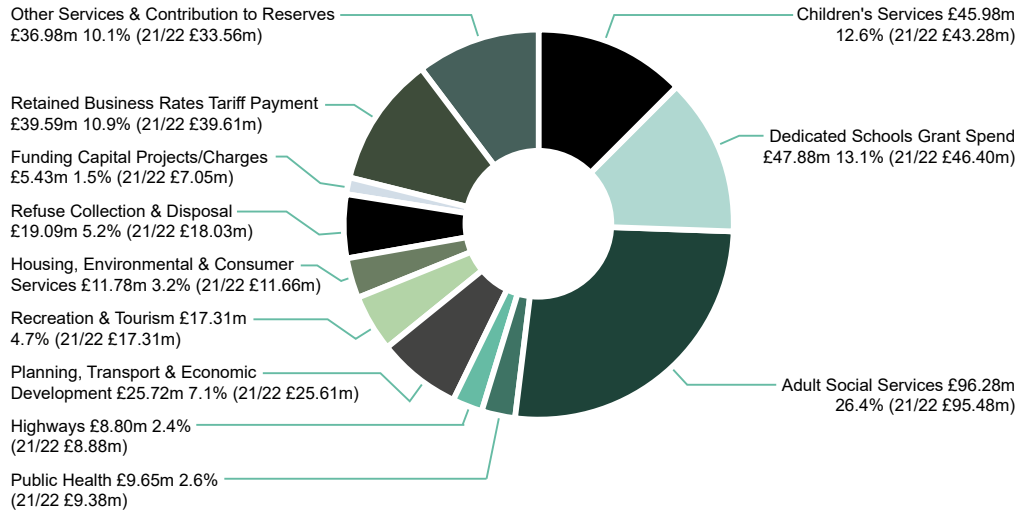
Further information on Council Tax charges, including the calculation of the Adult Social Care Precept percentage increase, is available on our website at www.bathnes.gov.uk/counciltax

¹ "Adult social care authorities" are local authorities which have functions under Part 1 of the Care Act 2014, namely county councils in England, districts councils for an area in England for which there is no county council, London borough councils, the Common Council of the City of London and the Council of the Isles of Scilly.

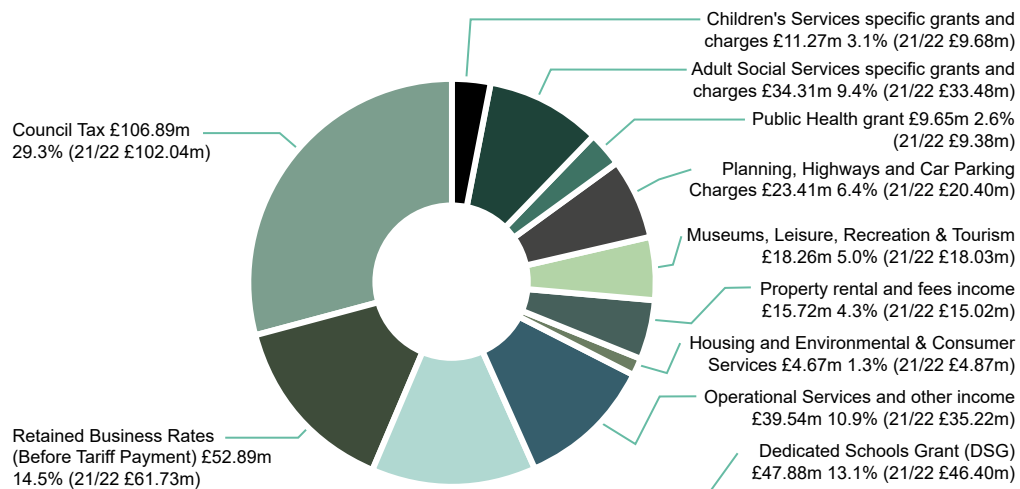


Revenue budget 2022-23

Where the council spends money 2022/23 - £364m - gross spend before taking account of income

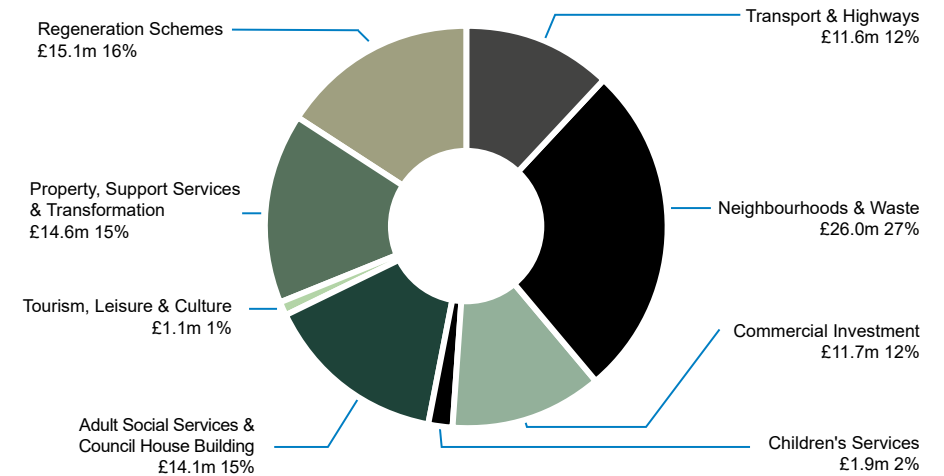


Where the money comes from to pay for all the services 2022/23 - £364m



Capital budget 2022-23

Total fully approved spend £96.1m



For further information

If you have any questions on the 2022/23 budget for Bath & North East Somerset Council please write to:

Chief Financial Officer,
Bath & North East Somerset Council,
Lewis House,
Manvers Street,
Bath
BA1 1JG

or email finance@bathnes.gov.uk or
visit our website at www.bathnes.gov.uk

Parish & Town Councils – Precepts

The Council Tax charges shown below relate to the charge for the Parish Council, Town Council or Charter Trustee element only.

2021/22 Precept £	2022/23 Precept £	Parish	Band D £
143,754	145,890	Bath	4.50
23,000	26,000	Bathampton	34.11
52,770	55,400	Batheaston	48.67
25,230	27,180	Bathford	32.32
19,699	21,078	Camerton	81.63
5,000	5,000	Charlcombe	22.11
2,700	1,800	Chelwood	28.62
36,000	36,000	Chew Magna	55.27
21,000	22,000	Chew Stoke	45.98
2,500	2,500	Claverton	32.98
51,588	55,234	Clutton	89.39
9,000	9,600	Combe Hay	105.30
13,291	13,615	Compton Dando	45.48
18,000	18,000	Compton Martin	69.45
10,219	10,686	Corston	54.79
8,674	9,108	Dunkerton & Tunley	38.50
15,152	15,152	East Harptree	47.21
8,667	8,667	Englishcombe	61.87
21,000	23,000	Farmborough	44.69
12,700	12,700	Farrington Gurney	38.72
32,024	34,394	Freshford	107.76
35,500	35,500	High Littleton	42.66
9,000	9,701	Hinton Blewett	67.54
14,282	17,138	Hinton Charterhouse	72.16
2,500	2,500	Kelston	27.64
628,364	664,032	Keynsham	96.88
7,365	7,700	Marksbury	40.05
408,675	431,045	Midsomer Norton	106.51
9,368	10,983	Monkton Combe	63.20

Parish & Town Councils – Precepts (continued)

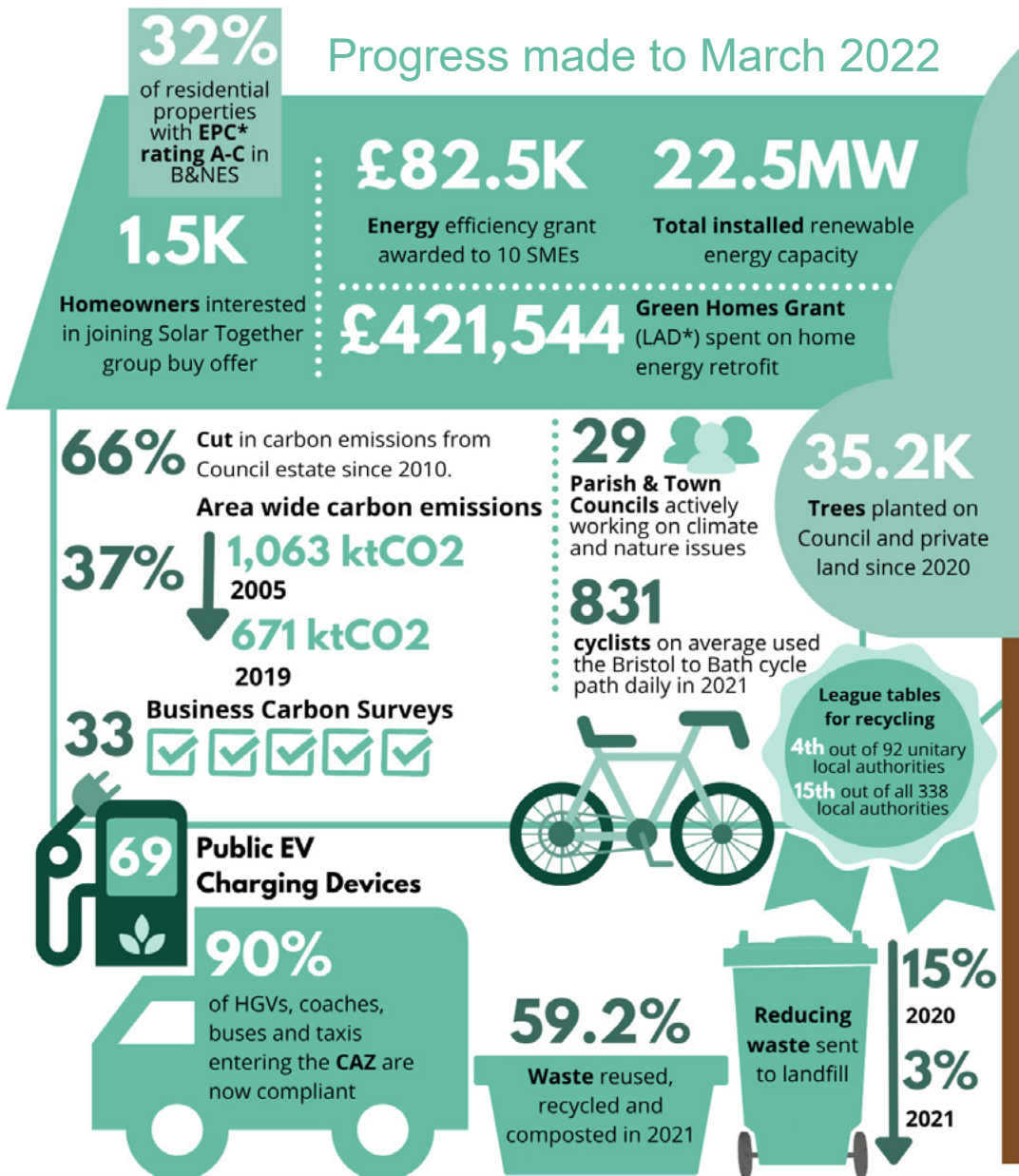
2021/22 Precept £	2022/23 Precept £	Parish	Band D £
4,100	4,300	Nempnett Thrubwell	41.02
7,350	7,730	Newton St. Loe	108.40
0	0	North Stoke	0.00
4,000	4,000	Norton Malreward	34.80
244,632	251,589	Paulton	121.26
251,452	251,452	Peasedown St. John	117.54
6,700	7,102	Priston	57.21
17,300	19,463	Publow with Pensford	39.92
262,508	270,461	Radstock	156.62
38,322	41,005	Saltford	22.53
10,522	10,522	Shoscombe	61.66
14,358	14,482	South Stoke	58.99
750	750	St. Catherine	18.25
18,385	18,385	Stanton Drew	56.29
24,625	24,875	Stowey Sutton	36.47
3,700	3,700	Swainswick	28.48
30,396	33,813	Temple Cloud with Cameley	62.44
75,000	80,000	Timsbury	85.58
14,414	14,932	Ubley	84.61
16,040	16,040	Wellow	62.41
8,750	9,000	West Harptree	38.48
207,650	218,590	Westfield	114.71
38,000	40,000	Whitchurch	58.15
2,945,976	3,073,795	TOTAL	

For information on calculating the charge for different property bands visit:
www.bathnes.gov.uk/ctax-bands

If your parish precept is £140,000 or above in 2022/23, a leaflet which includes details about how the parish money is spent in your area is also available online at
www.bathnes.gov.uk/ctaxguide

Our progress to net zero

We're taking extensive and wide-ranging action to tackle the Climate Emergency. The good news is that carbon emissions across Bath and North East Somerset are reducing.



Next steps

We're working with communities, partners, local, regional and national government to cut emissions further to reach our goal of net zero by 2030.

Our Action Plan for this year includes:

- building a state-of-the-art, low carbon Recycling Hub in Keynsham
- working with WECA and West of England councils on a regional Climate Emergency Action Plan
- addressing skills, supply chain and delivery issues to speed up retrofit
- supporting businesses to decarbonise and transition to a low carbon economy
- delivering the first Liveable Neighbourhood schemes
- implementing the Journey to Net Zero transport plan
- installing solar panels on council property, including two more care homes
- helping to accelerate the delivery of renewable energy

Make a difference

We can all make small changes to improve our lives by helping to tackle the Climate & Ecological Emergency:

- walk, cycle and use public transport; use your car less
- recycle, repair, reuse or share
- avoid food waste
- buy local and seasonal food when you can
- buy less, borrow more, make it last and eliminate single use plastics
- avoid palm oil in ultra-processed food, cleaning products and toiletries
- switch to a green energy supplier
- get home energy advice via the council's Energy at Home helpline
- when restrictions allow take part in local litter picks
- volunteer to support environmental projects
- join our Zero Carbon, Nature Positive online community network
- share ideas with friends, neighbours and your community

For more information about what the council is doing to tackle the Climate and Ecological Emergency visit: www.bathnes.gov.uk/climate-emergency

It's not too late to get vaccinated against coronavirus

Vaccines are still your first line of defence against Covid-19 reducing deaths, cutting the risk of developing serious illness, being admitted to hospital, and developing long covid.

Help protect yourself, your family and friends by getting vaccinated, getting boosted and getting protected.



Pregnant?

If you're pregnant, you're at higher risk of getting seriously ill from Covid-19. Don't wait until after you have given birth to get your Covid-19 vaccine.

Boosters

Booster jabs are available to all adults aged 16+.

Children and young people

Those aged 12 to 15 can have two doses, 12 weeks apart. They are also eligible for a booster if they are at higher risk from Covid-19 or who live with someone who has a severely weakened immune system.

All children aged between five and 11 in England will now be offered a low-dose Covid-19 vaccine.

How to get your vaccine

You can get your vaccine in the following ways:

1. Book an appointment on the National Booking System <https://www.nhs.uk/conditions/coronavirus-covid-19/coronavirus-vaccination/book-coronavirus-vaccination/> You need to be registered with a GP surgery in England to use this service.
2. If you cannot book appointments online, you can call 119 free of charge (7am to 11pm). You can speak to a translator if you need to. If you have difficulties communicating or hearing, or are a British Sign Language (BSL) user, you can use textphone 18001 119 or the NHS 119 BSL interpreter service <https://interpreternow.co.uk/nhs119>
3. Get your vaccination at a walk-in clinic (no need to book or be registered with a GP). To find a walk-in clinic near you, please go to the NHS website <https://www.nhs.uk/conditions/coronavirus-covid-19/coronavirus-vaccination/find-a-walk-in-coronavirus-covid-19-vaccination-site/>

Tested positive?

If you've had a positive Covid-19 test, you need to wait before getting any dose of the vaccine.

- 4 weeks (28 days) if you're aged 18 years old or over
- 12 weeks (84 days) if you're aged 12 to 17 years old
- 4 weeks (28 days) if you're aged 12 to 17 years old and at high-risk from Covid-19

The waiting period starts from the date you had symptoms, or the date of the positive test if you did not have any symptoms.

Helping you stay safe and well

The Community Wellbeing Hub provides a central place for you to access a range of health and wellbeing services.

Our friendly, caring and discreet team of advisors provide a range of services to support you with:

- walk, cycle and use public transport; use your car less
- Keeping active and healthy
- Achieving a healthy weight
- Accessing food, transport or medication
- Mental health and wellbeing
- Stopping smoking
- Housing advice
- Employment issues and advice

Please give us a call on **0300 247 0050** or email cwhbanes@hcrhcaregroup.com

We are open Monday-Friday 9am-5pm and will be happy to help you.

The Community Wellbeing Hub, led by the HCRG Care Group (formerly Virgin Care), is a collaboration between Bath & North East Somerset Council, HCRG, and many third sector organisations.



**Community
Wellbeing Hub**
Bath and North East Somerset

It's your council – get involved



We want you to have a bigger say in what we do and how we do it.

Webinars: Over the past two years we've held regular webinars on key issues and hundreds of residents have taken part. It's a fantastic opportunity to put your questions directly to us and share your views on the issues that matter to you.

To find out more about upcoming webinars and to register to take part visit: www.bathnes.gov.uk/webinars. You can also look back on all our previous webinars by visiting our Youtube channel: www.youtube.com/BathnesCouncil

Consultations: Feedback from consultations helps inform our decision making. So, your views really do matter. You can take part in all our consultations online just visit: www.bathnes.gov.uk/have-your-say

Keep up to date



Social media: The best way to keep up to date with the very latest news in your community and important updates from the council is to follow us on social media. You'll find us on Twitter @bathnes, Facebook (search for Bath and North East Somerset Council), Instagram @bathnescouncil and YouTube. We also regularly post on nextdoor.co.uk

E-connect: Our weekly e-newsletter is packed with news, the latest local Covid-19 updates, useful information on where to find help and support and a regular column from the council Leader. To subscribe to e-connect just visit: www.bathnes.gov.uk/econnect

Change a life



We need more foster carers: If you are interested or would like to find out more visit: fostering.bathnes.gov.uk or call our Family Placement Team on 01225 394949

Explore the city



Later this spring, we will be launching the improved residents' Discovery Card. With Discovery card, you will receive complimentary entries to our heritage attractions Roman Baths, Victoria Art Gallery and Fashion Museum, as well as a number of other benefits, while exploring and discovering our city. You will be able to apply for your new card easily online very soon. Please sign up to our newsletter and check out our website www.bathnes.gov.uk/services/tourism-and-heritage/discovery-card for the latest news and updates.

Contact the council



Council Tax and Benefits: For Council Tax enquiries including exemptions and discounts, visit: www.bathnes.gov.uk/counciltax For any Council Tax Support or Housing Benefit queries please visit: www.bathnes.gov.uk/benefits

Reporting suspicions of benefit fraud: All reports are treated confidentially. Call the National Benefit Fraud hotline on 0800 854 440 (or textphone 0800 328 0512). You may also make a report it online at www.gov.uk/report-benefit-fraud

Report it online: Use our web forms, including our Fix My Street service, to report issues about litter, graffiti, potholes, missed waste collections and more. Go to: www.bathnes.gov.uk/reportit

Council Connect: For help with waste, roads, libraries, planning and general enquiries call Council Connect on **01225 394041** or email: council_connect@bathnes.gov.uk

This Council Tax guide can be made available in a range of languages and accessible formats (e.g. large print, Braille). If you would like to request an alternative format visit: www.bathnes.gov.uk/contactus Bath & North East Somerset Council will not use or disclose your Council Tax information for a purpose that falls outside the limits of its statutory responsibility unless you give consent. The only exception to this is where the disclosure of Council Tax information is required or permitted by law.



ENVIRONMENT AGENCY

The Council Tax (Demand Notices) (England) Regulations 2011.

The Environment Agency is a levying body for its Flood and Coastal Erosion Risk Management Functions under the Flood and Water Management Act 2010 and the Environment Agency (Levies) (England and Wales) Regulations 2011.

The Environment Agency has powers in respect of flood and coastal erosion risk management for 2813 kilometres of main river and along tidal and sea defences in the area of the Wessex Regional Flood and Coastal Committee. Money is spent on the construction of new flood defence schemes, the maintenance of the river system and existing flood defences together with the operation of a flood warning system and management of the risk of coastal erosion. The financial details are:

Wessex Regional Flood and Coastal Committee		
	2021/2022 '000s	2022/2023 '000s
Gross Expenditure	£40,221	£61,588
Levies Raised	£3,857	£3,934
Total Council Tax Base	1,036	1,050

The majority of funding for flood defence comes directly from the Department for the Environment, Food and Rural Affairs (Defra). However, under the new Partnership Funding rule not all schemes will attract full central funding. To provide local funding for local priorities and contributions for partnership funding the Regional Flood and Coastal Committees recommend through the Environment Agency a local levy.

A change in the gross budgeted expenditure between years reflects the programme of works for both capital and revenue needed by the Regional Flood and Coastal Committee to which you contribute. The total Local Levy raised by this committee has increased by 2.0%

The total Local Levy raised has increased from £3,857,231 in 2021/2022 to £3,934,375 for 2022/2023.

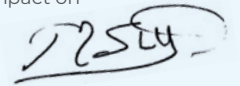
LOCAL POLICE TAX

HOW WILL WE SPEND IT?

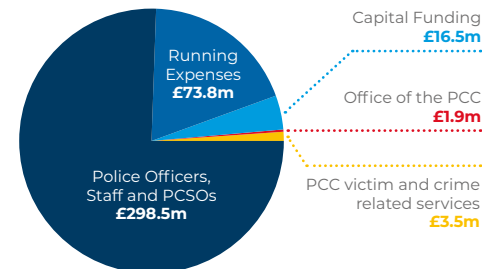


As your PCC, I am responsible for setting the amount of money you contribute to local policing through the council tax.

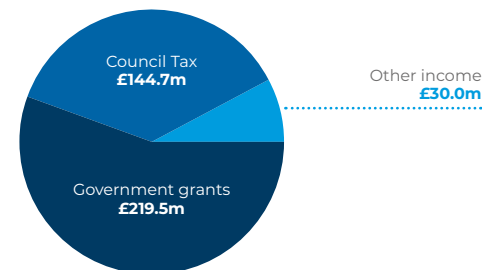
As PCC, I have to balance the challenges facing policing with local people's views in order to best resource an efficient and effective police service that can keep people safe. The increase will help Avon and Somerset Police to deliver my Police & Crime Plan and will mean that any savings that need to be made in future will have less of an impact on frontline services."



WHERE DOES THE MONEY GO?



WHERE DOES THE MONEY COME FROM?



OUR PRIORITIES



Preventing and fighting crime



Engaging, supporting and working with communities, victims and partner organisations



Leading the police to be efficient and effective



Increasing the legitimacy of, and public confidence in, the police and criminal justice system

OUR VALUES



OPENNESS



PARTNERSHIP



COMPASSION



COURAGE

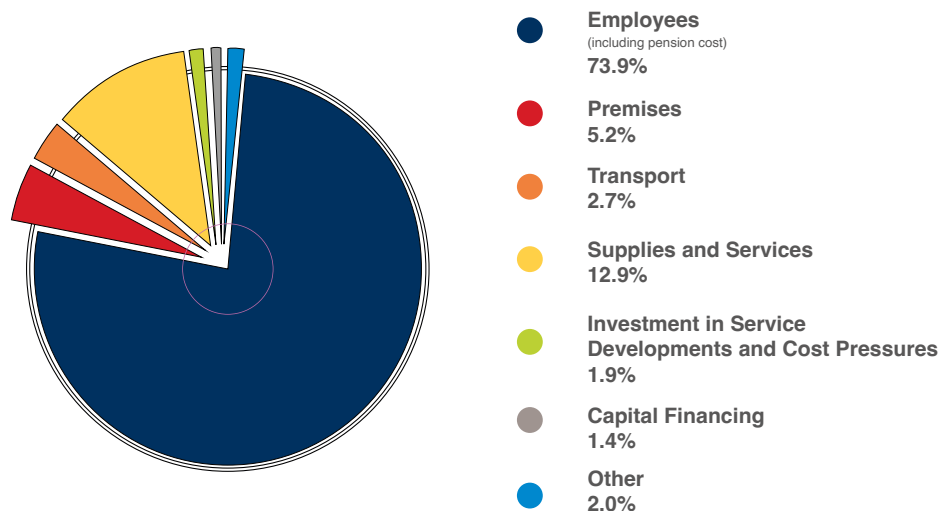
Your fire and rescue service

Avon Fire & Rescue Service (AF&RS) protects the communities of Bath & North East Somerset, Bristol, North Somerset and South Gloucestershire.

For 2022/23, this service will cost Band D council tax payers £77.95 which is an increase of 1.99%.

We continue to provide this vital service to keep you and your family safe, 24 hours a day, seven days a week, 365 days a year at cost of around 10p a day for each of the 1.1 million people who live in our area.

Where does each pound go?



£ Annual budget

Avon Fire Authority has set its net budget for 2022/23 at £44.560 million. This represents a Council Tax level of £77.95 a year for a Band D property, an increase of 1.99%.

The Government's funding assessment for Avon Fire Authority has been increased by £0.047m (0.3%) to £16.208m for 2022/23. The impact of this is that the funding provided by Central Government is increased by £0.103m (0.9%) to £11.383m.



Spending plans

	2020/21 (£m)	2021/22 (£m)
Total fire expenditure	50.433	49.980
Income	-5.071	-5.421
Net budget before use of reserves	45.362	44.560
Use of reserves	-1.636	0.000
Net budget	43.726	44.560
Funding:		
Central Government		
Revenue Support Grant	5.116	5.144
Business rate - Top-up	6.136	6.136
Local funding		
Locally retained business rates	4.635	4.616
Council tax	27.831	28.664
Total	43.718	44.560

The main changes in spending from 2020/21 to 2021/22 are shown below.

Main changes in net expenditure	(£m)
2020/21 Budget	43.718
Inflationary pressures	0.752
Other	0.090
2021/22 Budget	44.560

For more information visit www.avonfire.gov.uk

[f](#) [@](#) [@AvonFireRescue](#)

For further information please contact: Avon Fire & Rescue Service,
Police & Fire Headquarters, PO Box 37, Valley Road, Bristol, BS20 8JJ
0117 926 2061