



traditional values, modern thinking

3 Valleys Health Primary Care Network

Chew and Somer Valley Forum – Feb 2024

Helen Harris
3 Valleys Health Primary Care Network Manager

Helen.Harris3@nhs.net



3 Valleys Health Primary Care Network

traditional values, modern thinking

11 GP sites across rural North East Somerset:

St Chad's Midsomer Norton and Chilcompton

Somerton House - Midsomer Norton

Westfield - Radstock

Chew

Harptree and Cameley

St Mary's - Timsbury

Elm Hayes - Paulton

Hope House - Radstock

Hillcrest - Peasedown St John





What is a Primary Care Network?

PCNs established July 2019. 1,250 in England

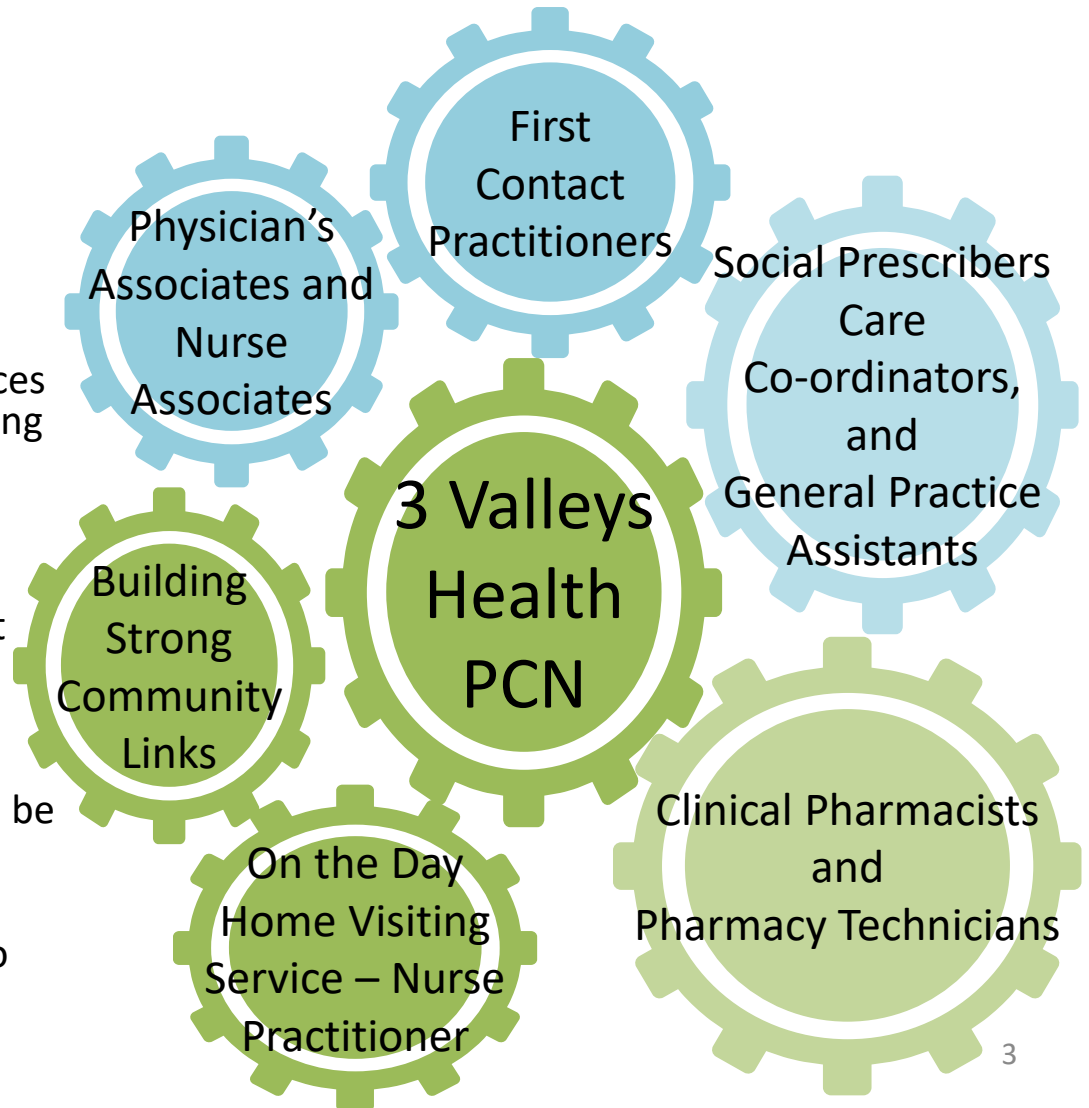
Groups of general practices working together to focus on local patient care

Working with other health and care organisations and their communities to provide better and more integrated services to improve population health and wellbeing

PCNs are vehicles for investment:
NHS England funded PCN workforce
Access to development money to support GP resilience and new enhanced services

Alleviate workload pressures on existing practice staff, so that general practice can be sustainable and thrive

Deliver the Government's commitment to improving patient access to quality healthcare services





3 Valleys Health Primary Care Network

- Registered patient population 68,000
- Second largest Primary Care Network in BaNES, Swindon and Wiltshire*
- A collective voice for 9 rural and semi-rural GP contracts
- Board of GP Partners meet monthly to agree PCN strategy
- Experienced Practice Manager and Senior Nurse Operational Groups
- PCN is now a limited company - directly employing 40 PCN colleagues and underpinned by a network legal agreement

Health system expertise within PCN

- BEMS Council, Chair of Locality Primary Care Collaborative ie. Voice of Primary Care – Dr Liz Hersch
- BEMS GP Federation Director – Dr Chris Lewis
- Wessex LMC Practice Manager representative – Caron Tremaine - Tucker
- NHS Confederation PCN Manager Group – Helen Harris
- Education leads who participate in clinical trainee teaching programmes

* 6 BaNES Primary Care Networks (24 in BSW CCG).



3 Valley Health – success so far...

- ✓ Ongoing Highly successful Covid-19 vaccination programme
- ✓ Comprehensive review of practice standard policies & procedures to ensure 'one best way' and CQC compliance
- ✓ Focus on improving patient access initiatives
- ✓ 3VH Home Visiting Nurse Practitioner Dominic Claire started last Nov
- ✓ Additional late afternoon blood/specimen collection service
- ✓ Young People - forging relationships with local schools and school nurse team
- ✓ Developing Group Consultations for patients across trial practices
- ✓ Lifestyle Medicine – involvement in green prescribing community projects
- ✓ Using Population Health Analytics to identify patient health needs
- ✓ 3 Valleys *Better* Health team: Social Prescribers and Care Co-ordinators working together with our community and voluntary groups eg. Carer's Events
- ✓ Launch of PCN Website: www.threevalleyshealthpcn.co.uk and social media to follow



Next steps for PCN

- Further develop the support colleagues in their challenging roles*
- Continue to identify and develop ways of working to improve patient and staff health and well-being including how we **tackle known health inequalities**
- **Promote digital** – how can we support patients to use technology to help their health needs and to help us improve operational efficiency?
- Review **practice estates** to ensure we can accommodate an expanding team
- Identify ‘greener’ opportunities for primary care to be more sustainable
- Strengthen our **community voice** ie. use of website and social media
- **Patient Forum** – involving the chair from each practice PPG and regular patient information events
- **One voice** – recognise unsustainable workload and financial viability of practices
- **Pharmacy First** offer launched in Community Pharmacy on 31 Jan to support primary care.

*Learning Organisation Accreditation – recognised ‘kitemark’ for attracting, developing and retaining a strong workforce.

Covid-19 Spring Boosters

NHS England recently canvassed PCN views on whether they are able to participate in this next vaccination programme.

JCVI advice is likely to include the following cohorts from mid-April '24:

- 75s and over

- 6m+ immunosuppressed

- Housebound

- Care Homes for older adults