

Bath & North East Somerset Green Space Strategy (2015-2029)

**Bath & North East
Somerset Council**

Green Space Area Profile: Bathavon



Report produced on behalf of Bath and North East Somerset Council by Ethos Environmental Planning

CONTENTS

1.0	Bathavon Area Profile	3 - 5
1.1	Introduction	
1.2	Geographical Area	
1.3	Population	
1.4	Bath – vision and spatial strategy overview	
2.0	Existing provision of green space	6 - 16
2.1	Overview of green space provision in the study area	
3.0	Analysis of existing quantity of Green Space	17 - 19
3.1	Introduction	
3.2	Current quantity provision of green space	
4.0	Analysis of existing access to Green Space	20 - 24
5.0	Summary of quality issues and opportunities for Green Space	25 - 27
5.1	Introduction	
5.2	Audit methodology	
5.3	Summary of priority sites	
5.4	Site Hierarchies	
6.0	Future need for Green Space	28
6.1	Overall impact on green space	
6.2	Scenario – green space requirements from development	
7.0	Summary of issues and priorities for the area	29

Appendix 1	Summary quality scores	
------------	------------------------	--

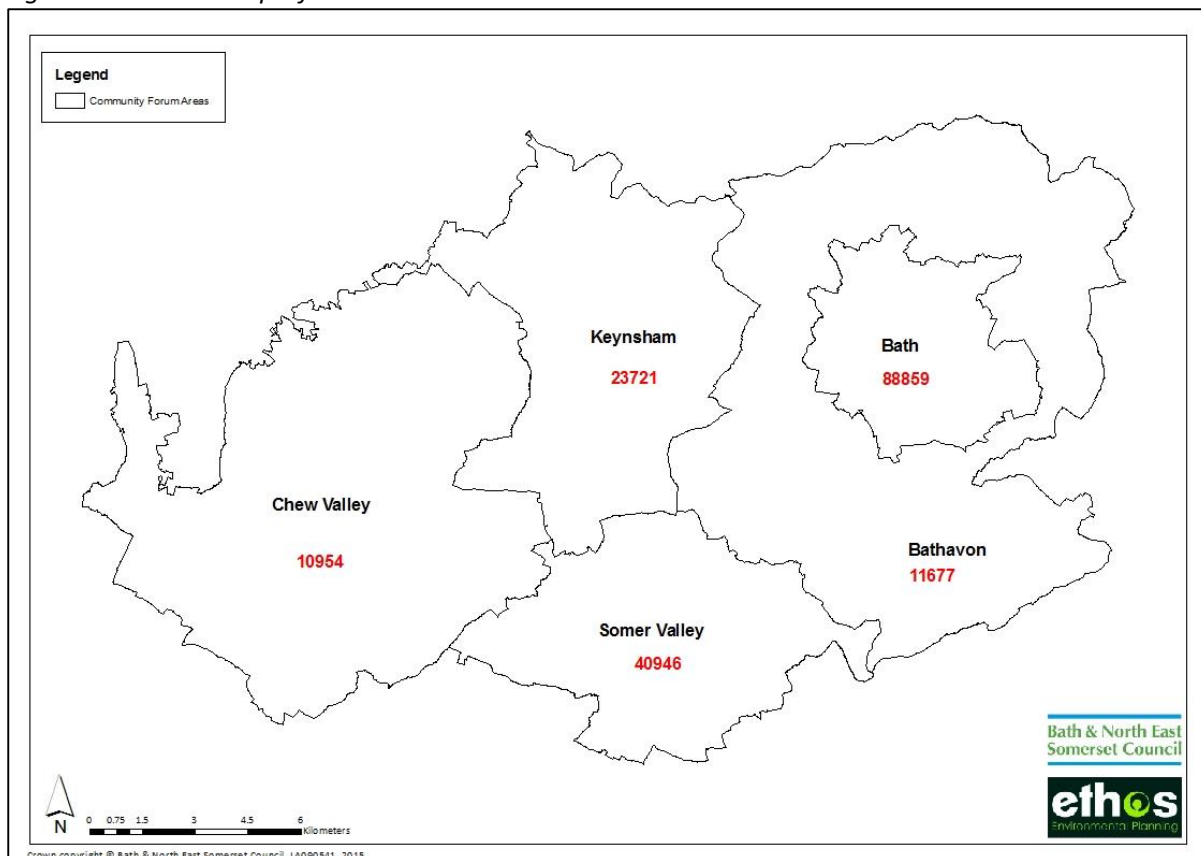
1.0 BATHAVON AREA PROFILE

1.1 Introduction

The Bath and North east Somerset Green Space Strategy is presented in two parts. The first part comprises an overview of the whole study and includes details on local needs, methodology, open space typologies and analysis of provision which combine to make recommendations for future provision and policies for open space in the district. The second part of the study comprises five green space area profiles which provide more localised information.

The area profiles have been developed for five areas as shown in figure 1. These draw on the established forum areas (*see section 1.3.4 of Part 1*), and the City of Bath, which is currently not established as a community forum area, however, for the purpose of this study, the wards that comprise Bath have been grouped together as an individual analysis area.

Figure 1 Area profiles within BANES



The area profiles should be read in conjunction with the main report (part 1). Each profile includes the following information:

- A description of the area;
- Maps showing the provision of green space;

- Quantitative analysis of current provision of open space'
- Analysis of access to open space;
- Summary of quality issues and opportunities;
- Analysis of future need for open space;
- Priorities for the area.

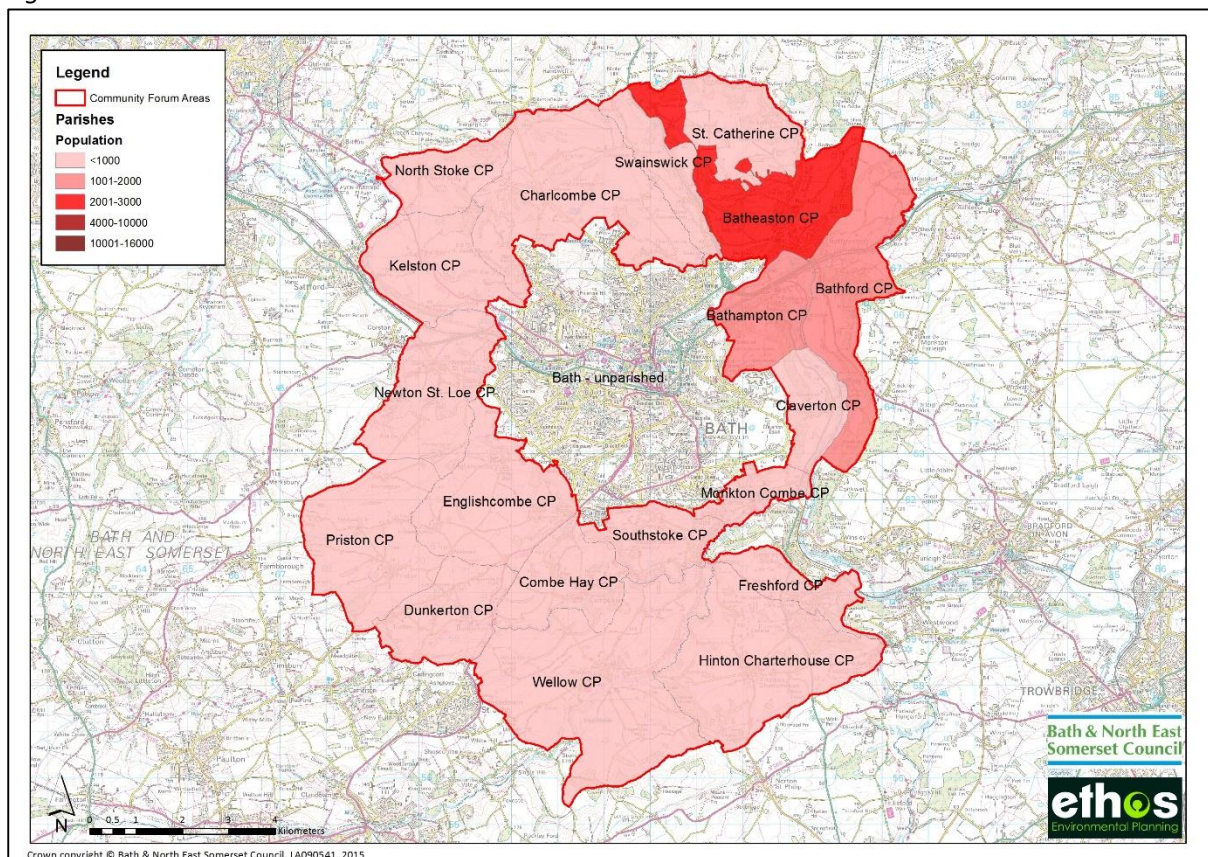
The area profiles are intended to be a starting point to inform other strategies and plans, including neighbourhood plans, planning policies, development control policies; parks and open spaces service and action plans.

All of the maps provided within this section of the report are intended to be used for indicative purposes only. Larger scale maps have been provided as a separate database to the council.

1.2 Geographical Area

The Bathavon Green Space Area Profile comprises the parishes that make up the Bathavon area, as shown in figure 2.

Figure 2 Bathavon Area



1.3 Population

Table 1 Parish population statistics (Census, 2011)

Parish	Population
Bathampton	1,603
Batheaston	2,735
Bathford	1,759
Charlcombe	422
Claverton	115
Combe Hay	147
Dunkerton	502
Englishcombe	318
Freshford	551
Hinton Charterhouse	515
Kelston	248
Monkton Combe	554
Newton St. Loe	581
North Stoke	72
Priston	232
St. Catherine	69
Swainswick	265
Southstoke	460
Wellow	529
<u>Total</u>	<u>11,677</u>

1.4 Bathavon – vision and spatial strategy overview

The BANES Core Strategy sets out a vision and spatial strategy for the Rural Areas in the District.

‘The District’s rich and diverse countryside will be maintained. Locally identified needs will be met whilst maintaining the individual character of villages. The rural economy will evolve and new types of jobs and ways of working will provide more locally based employment opportunities. The potential for the rural area to play an important role in local food production will be encouraged. Community involvement will help facilitate improvement in the provision of community facilities and public transport’.

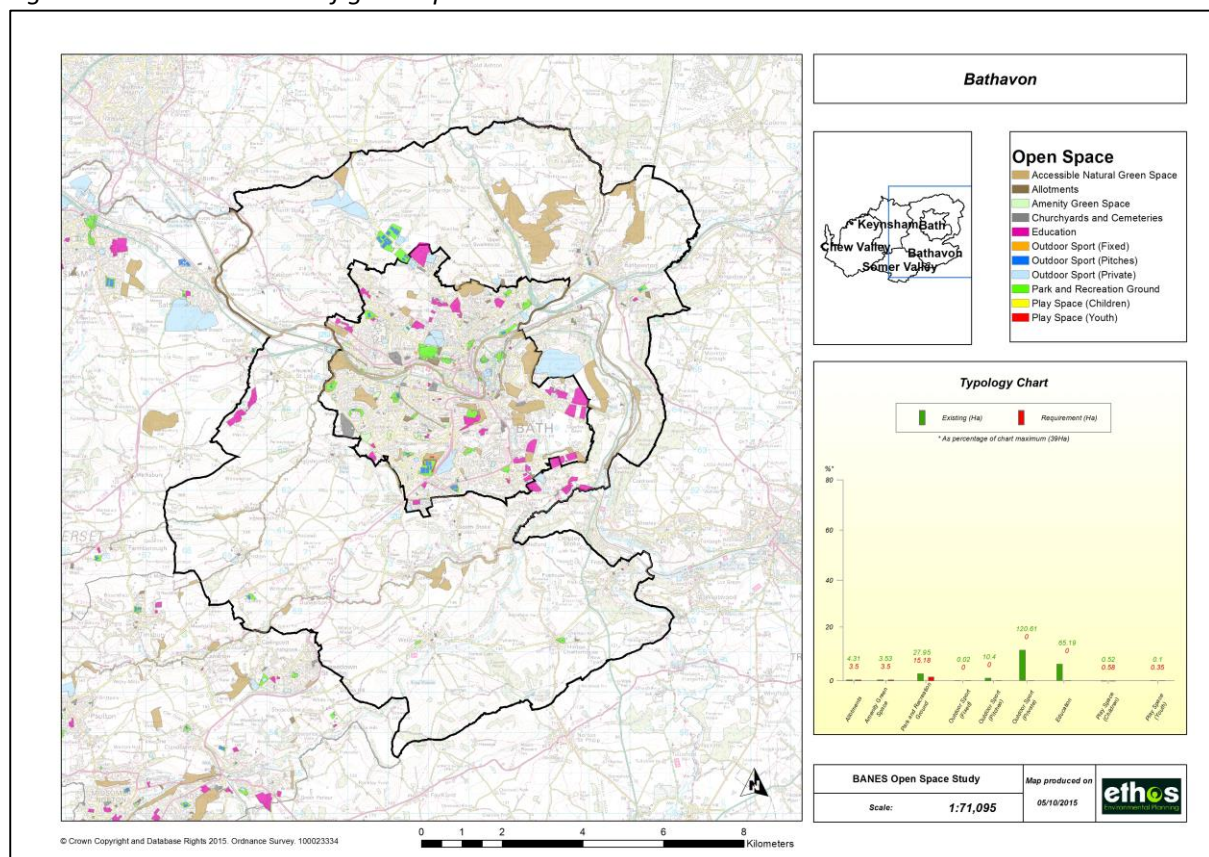
2.0 Existing provision of Green Space

This section provides maps showing existing green spaces that have been mapped and included within the study. A map is shown for the overall area, and then individual maps for each of the wards/parish as appropriate. The maps are intended to be used for indicative purposes and large scale maps and a GIS database of sites have been provided as an electronic database to the council.

It should be noted that for Accessible Natural Green Space, every effort was made to exclude sites that had no access, although in certain sites this was not always clear (see section 5.3 of the main report (part 1)).

2.1 Overview of green space provision in the study area

Figure 3 Overview of green space in the Bathavon Area



2.2 Provision by parish

Figure 4 Provision of green space in Parish of Bathford

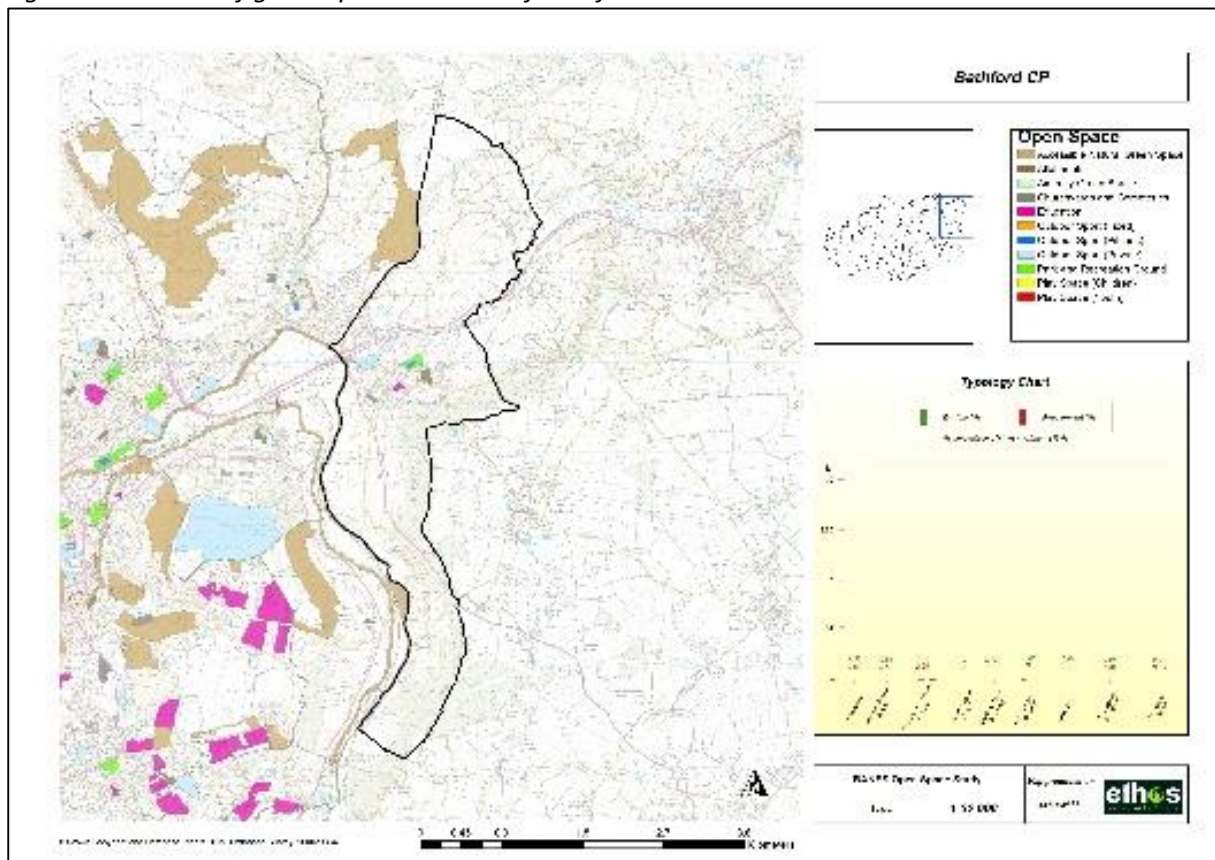


Figure 5 Provision of green space in Parish of Hinton Charterhouse

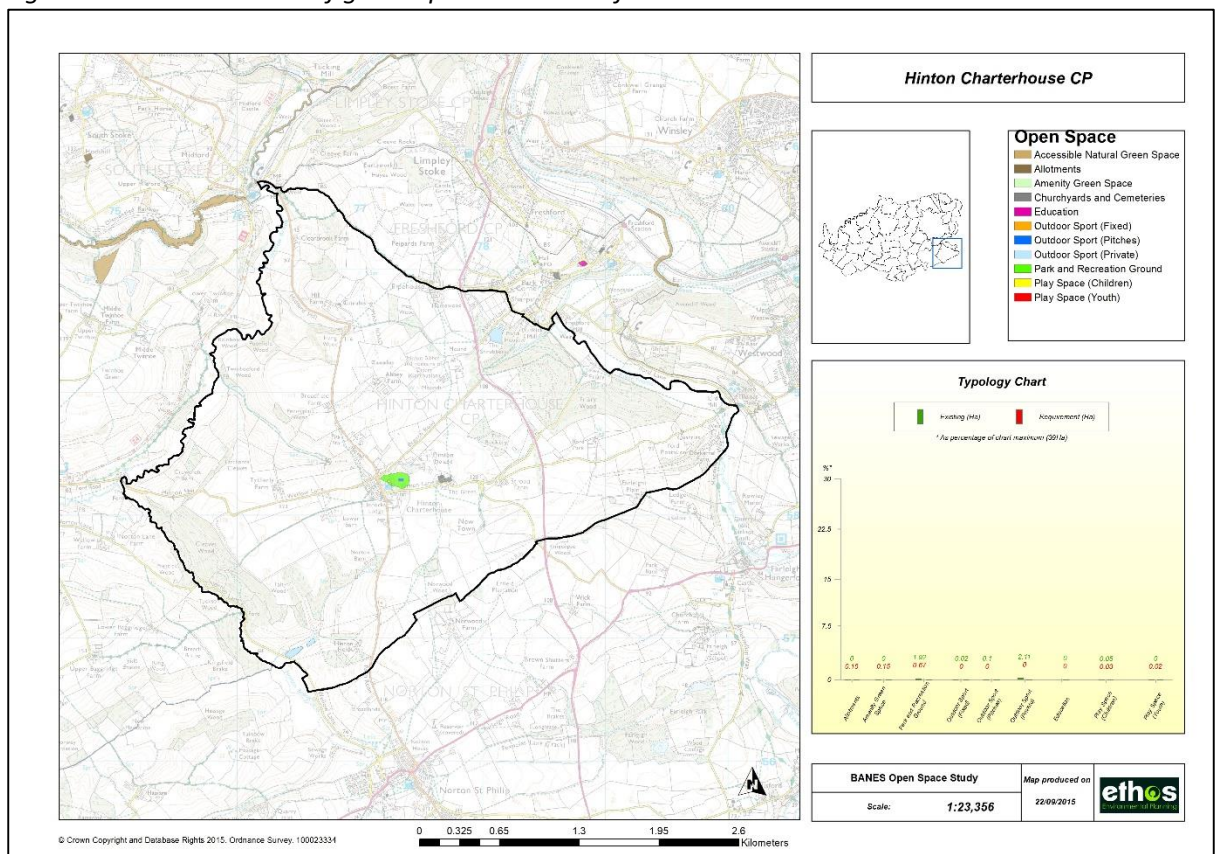


Figure 6 Provision of green space in Parish of Kelston

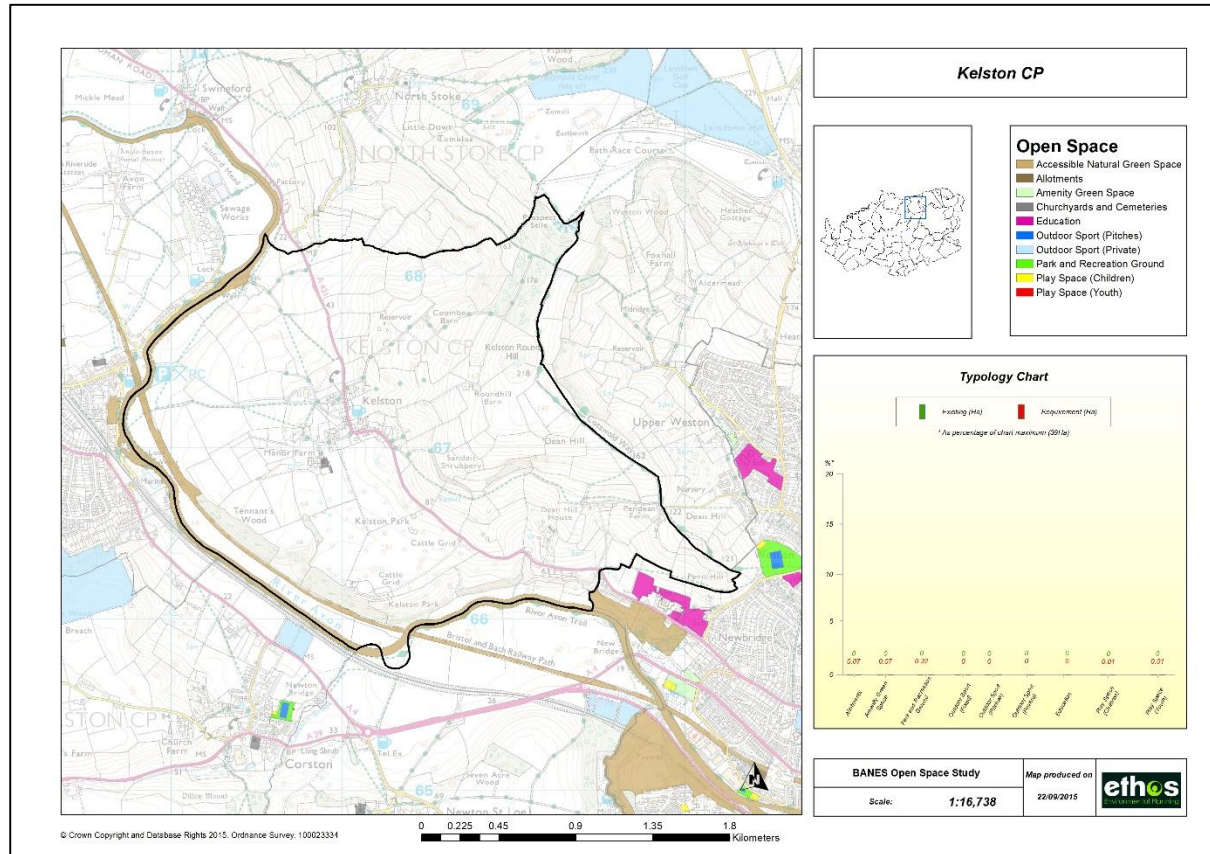


Figure 7 Provision of green space in Parish of Priston

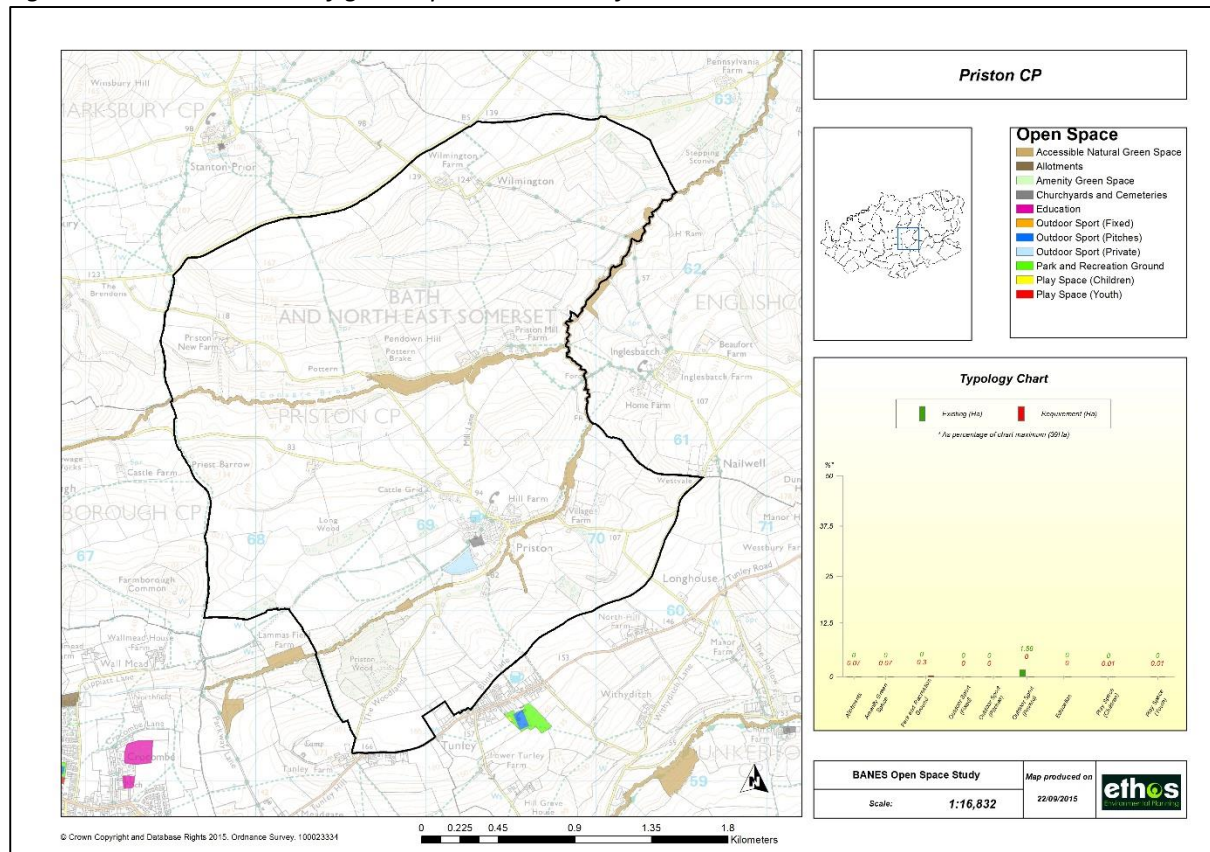


Figure 8 Provision of green space in Parish of Dunkerton

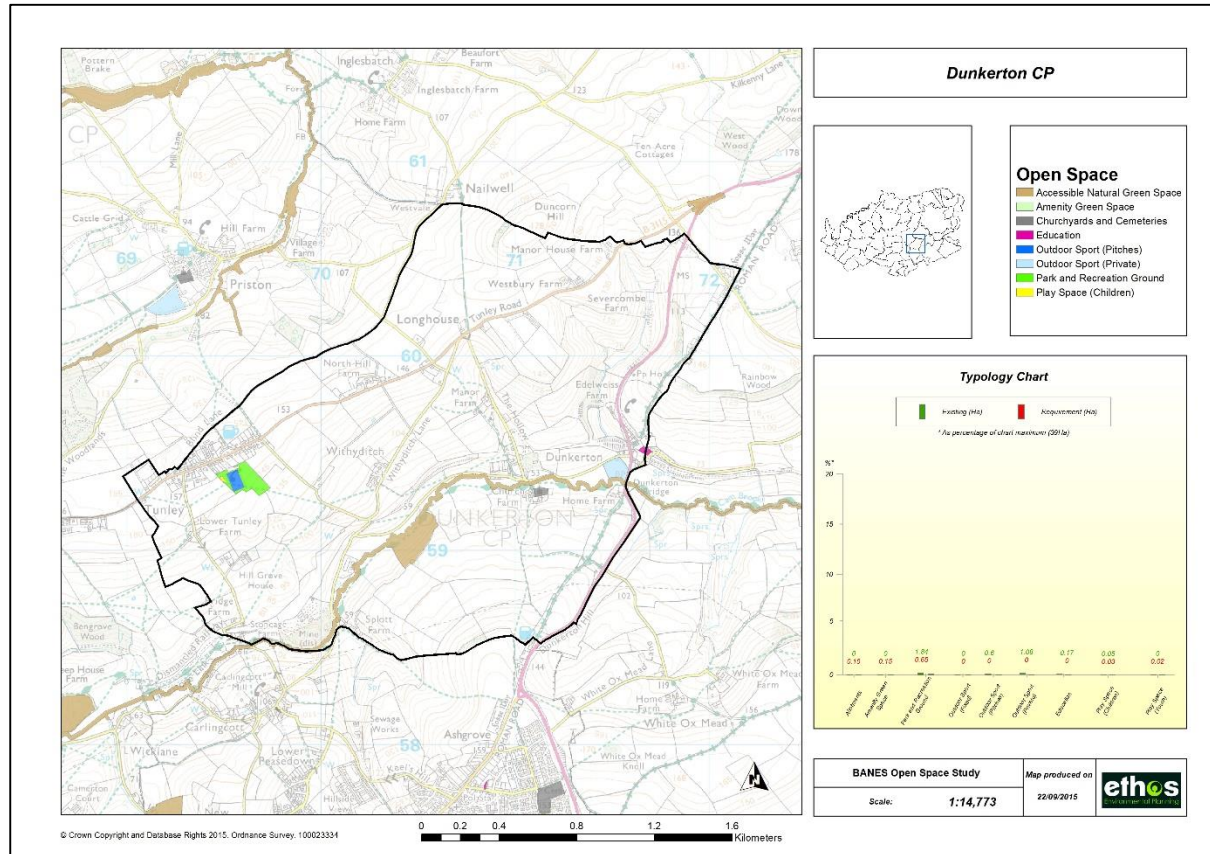


Figure 9 Provision of green space in Parish of Wellow

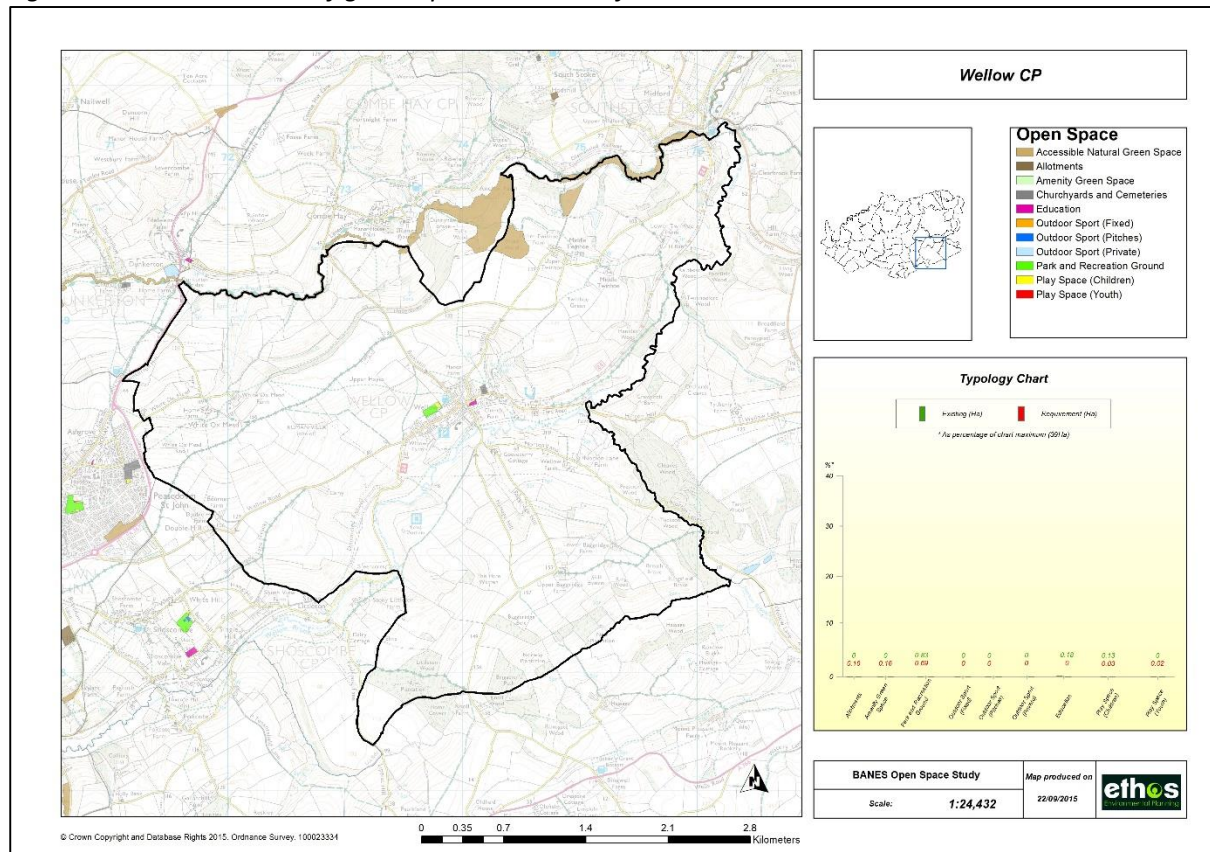


Figure 10 Provision of green space in Parish of Freshford

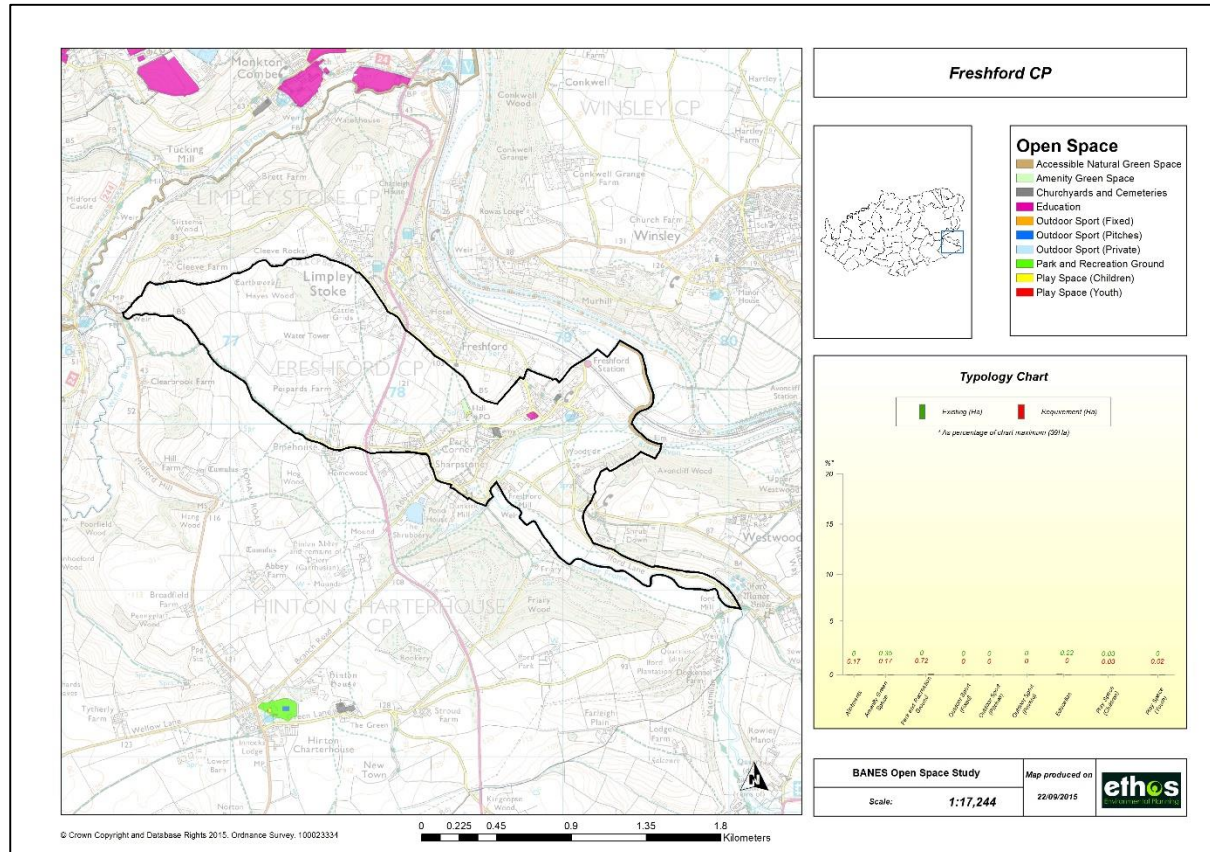


Figure 11 Provision of green space in Parish of Englishcombe

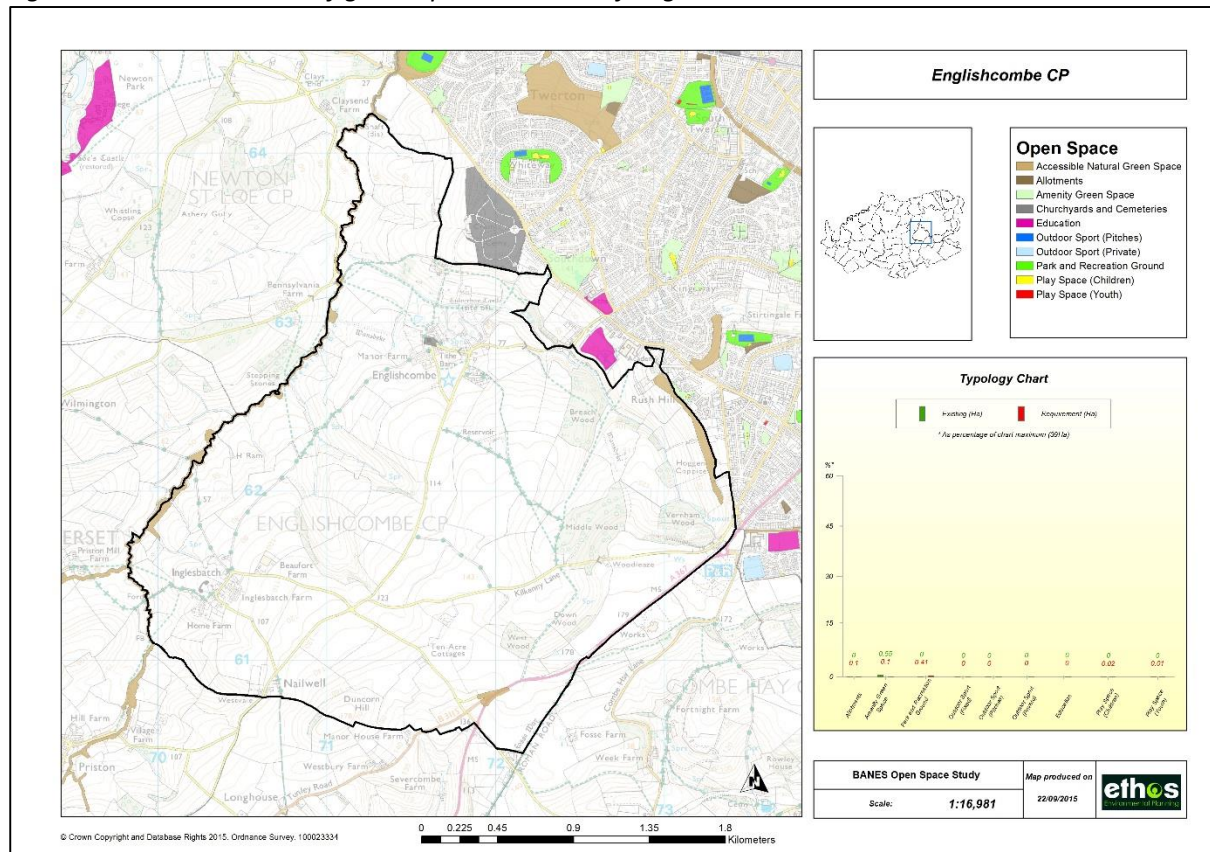


Figure 12 Provision of green space in Parish of Newton St. Loe

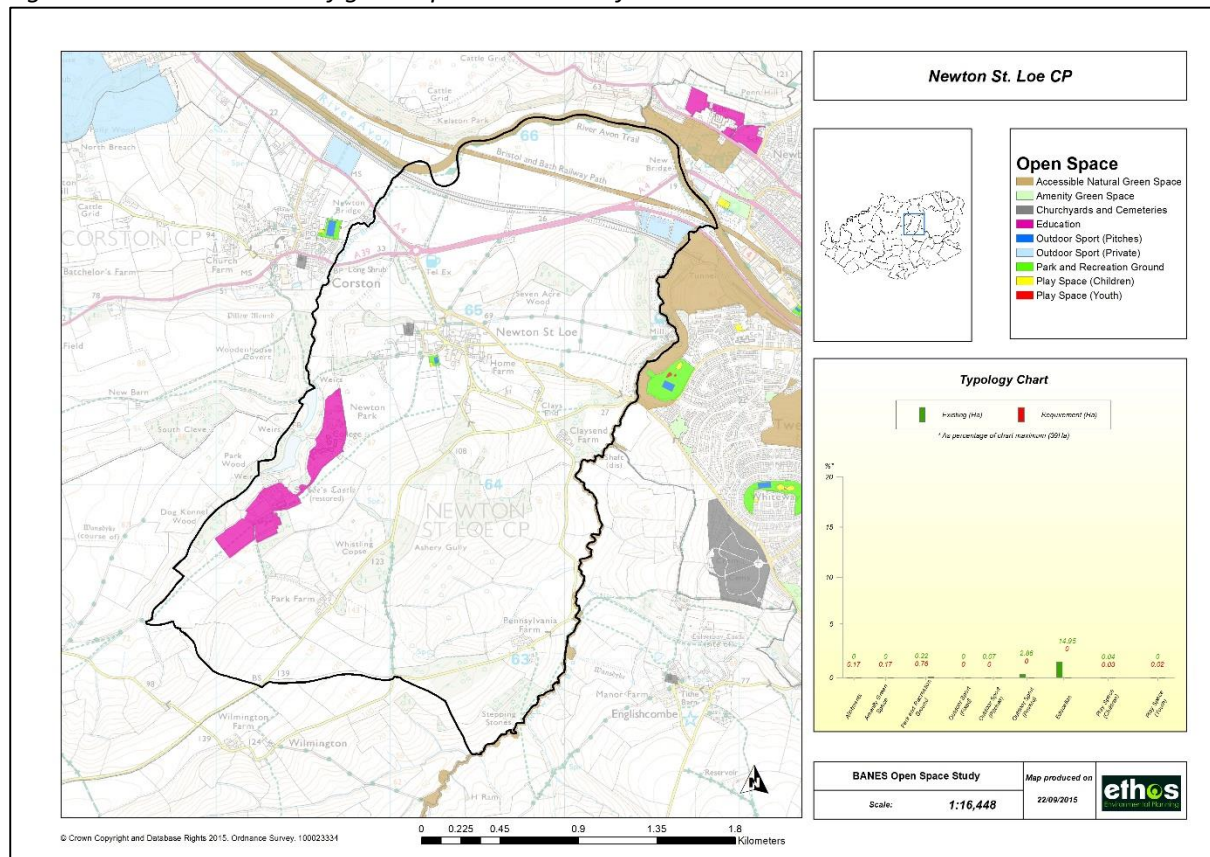


Figure 13 Provision of green space in Parish of North Stoke

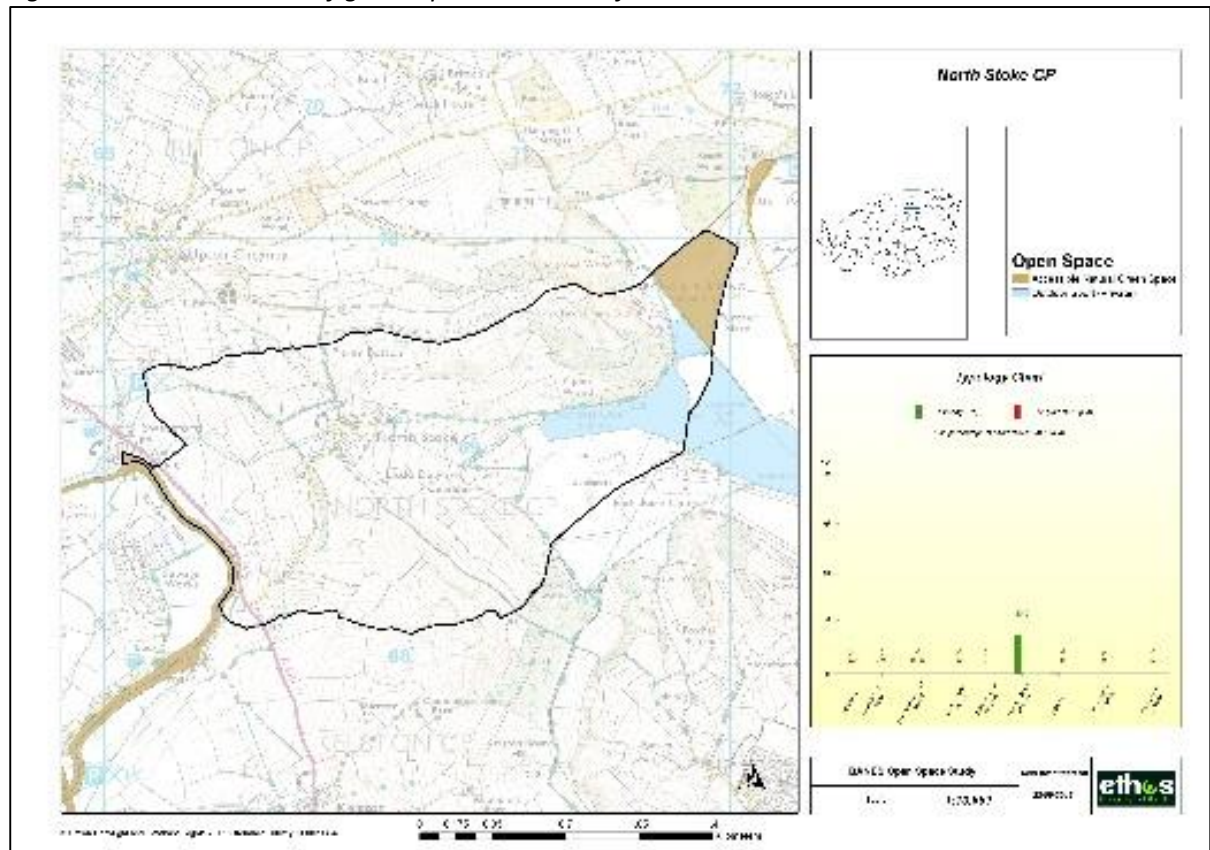


Figure 14 Provision of green space in Parish of Bathampton

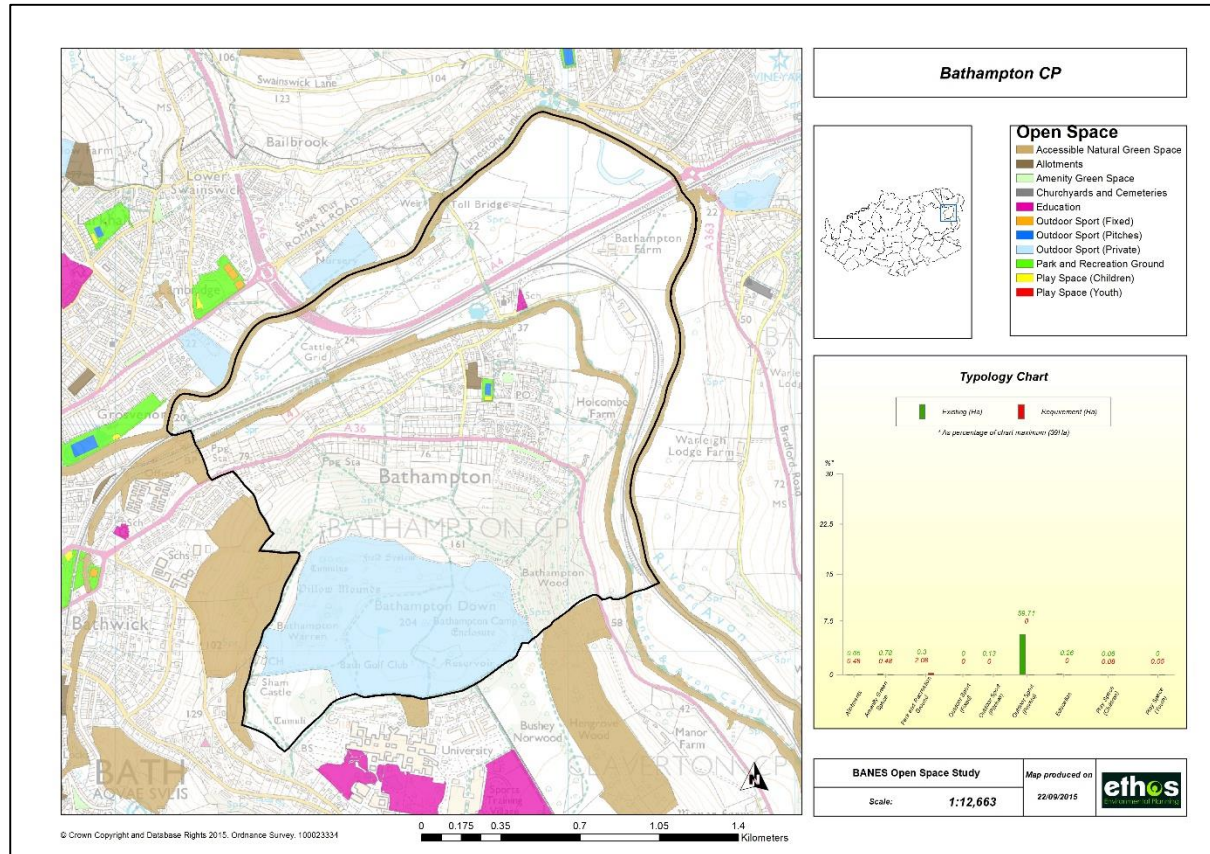


Figure 15 Provision of green space in Parish of Batheaston

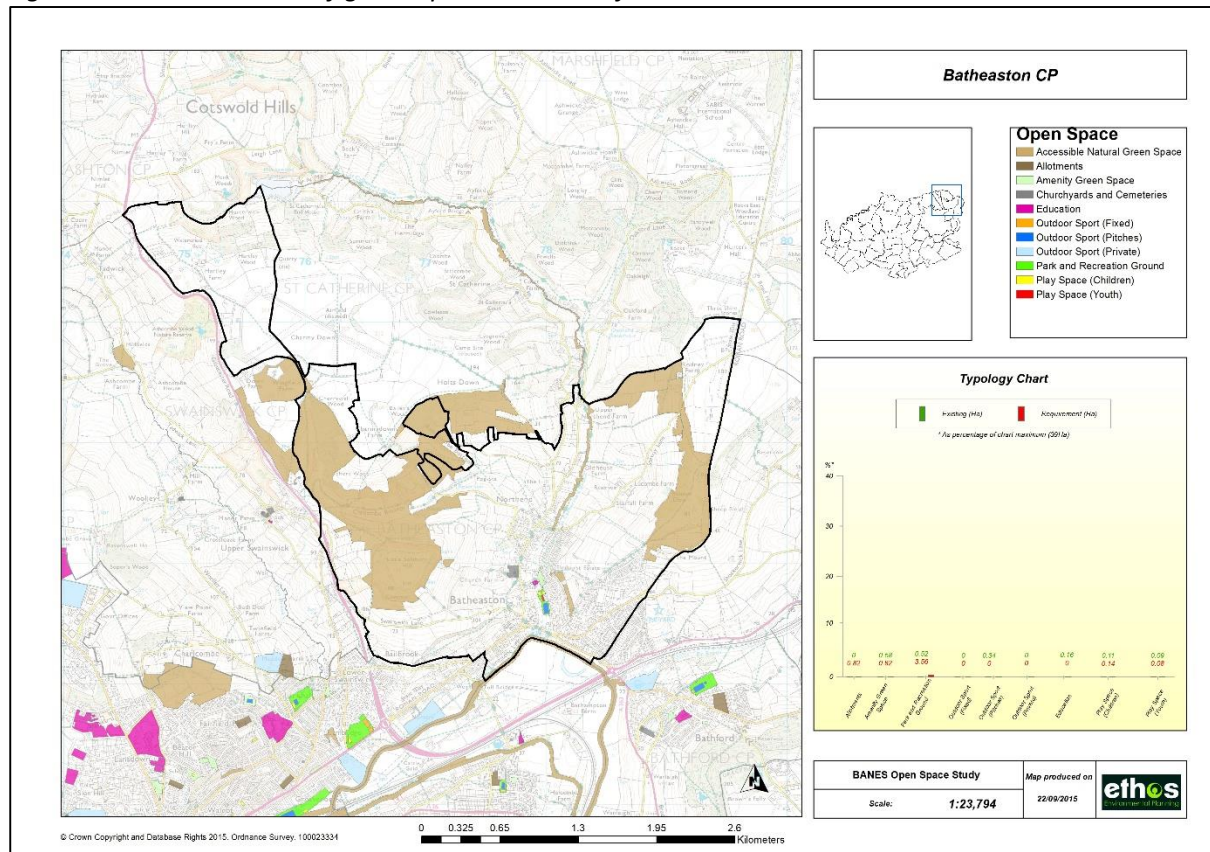


Figure 16 Provision of green space in Parish of Claverton

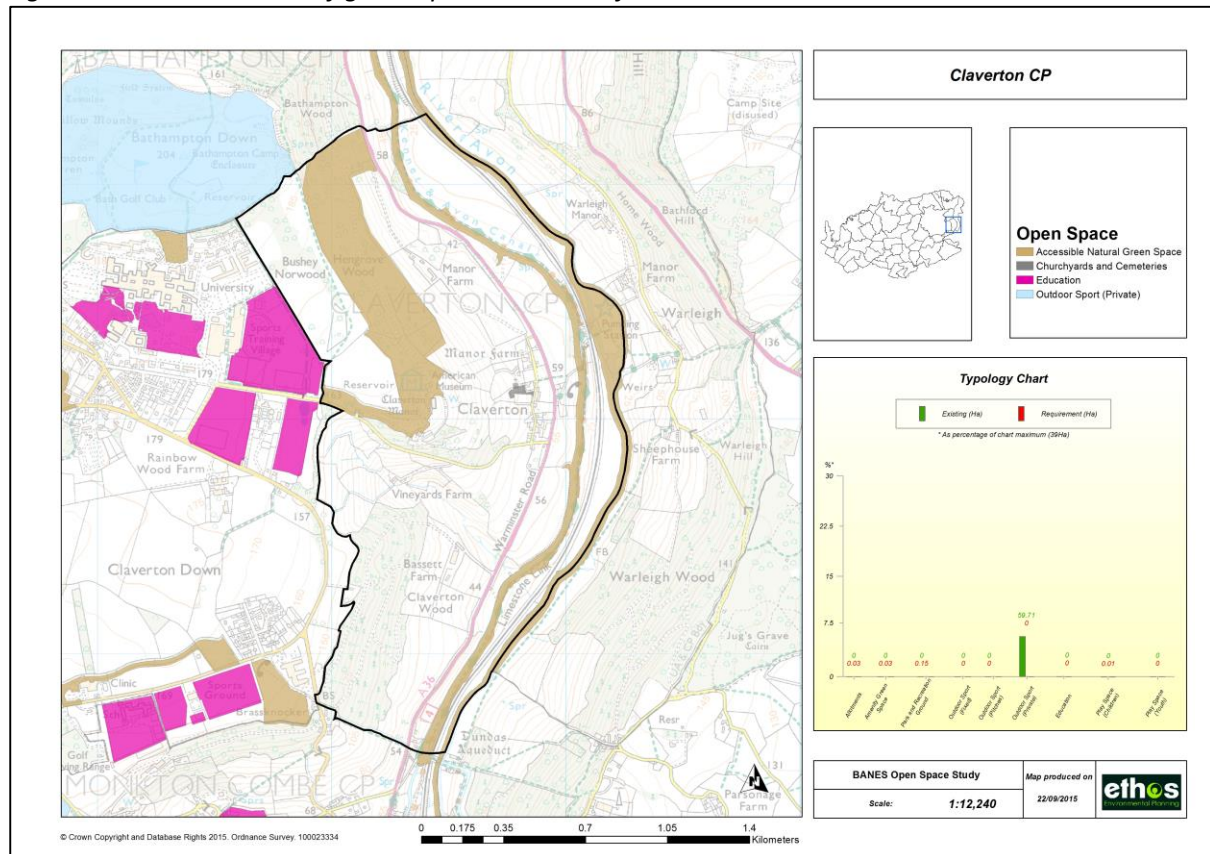


Figure 17 Provision of green space in Parish of Charlcombe

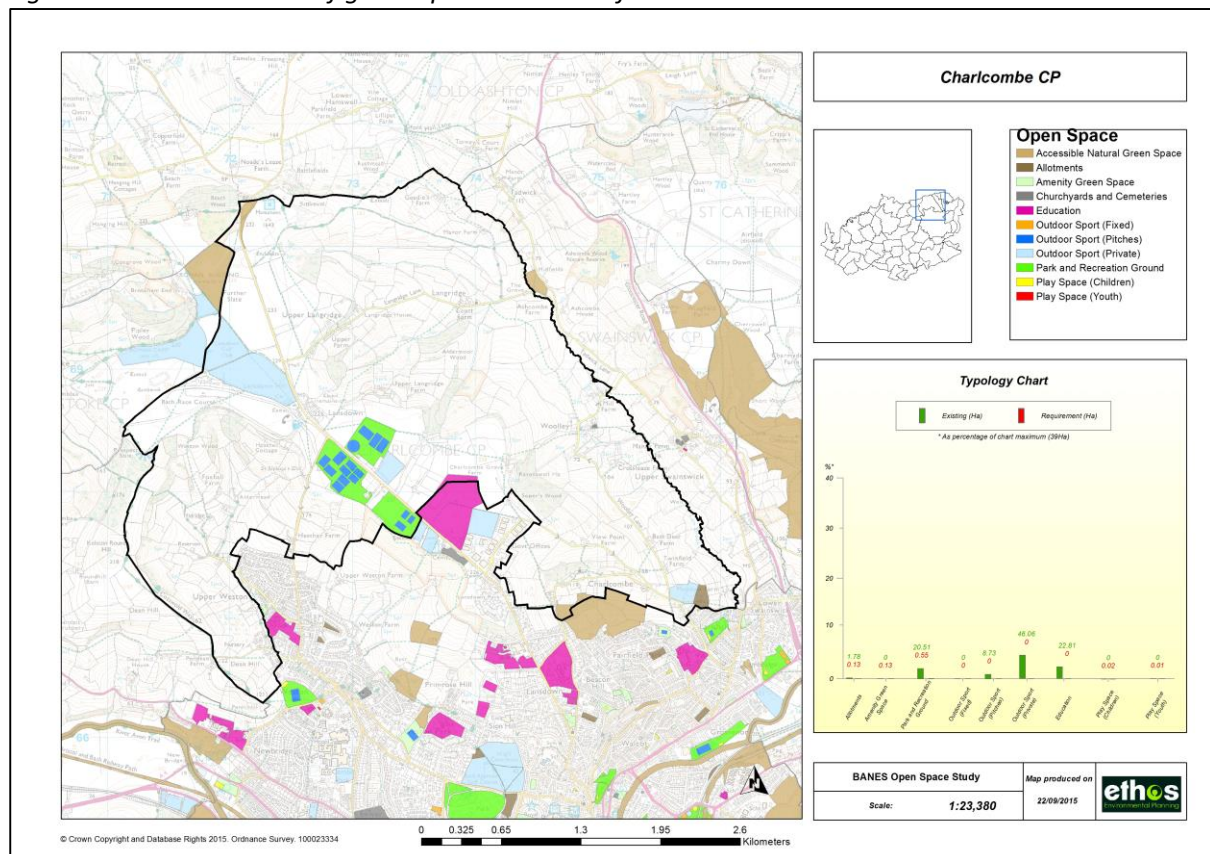


Figure 18 Provision of green space in Parish of Monkton Combe

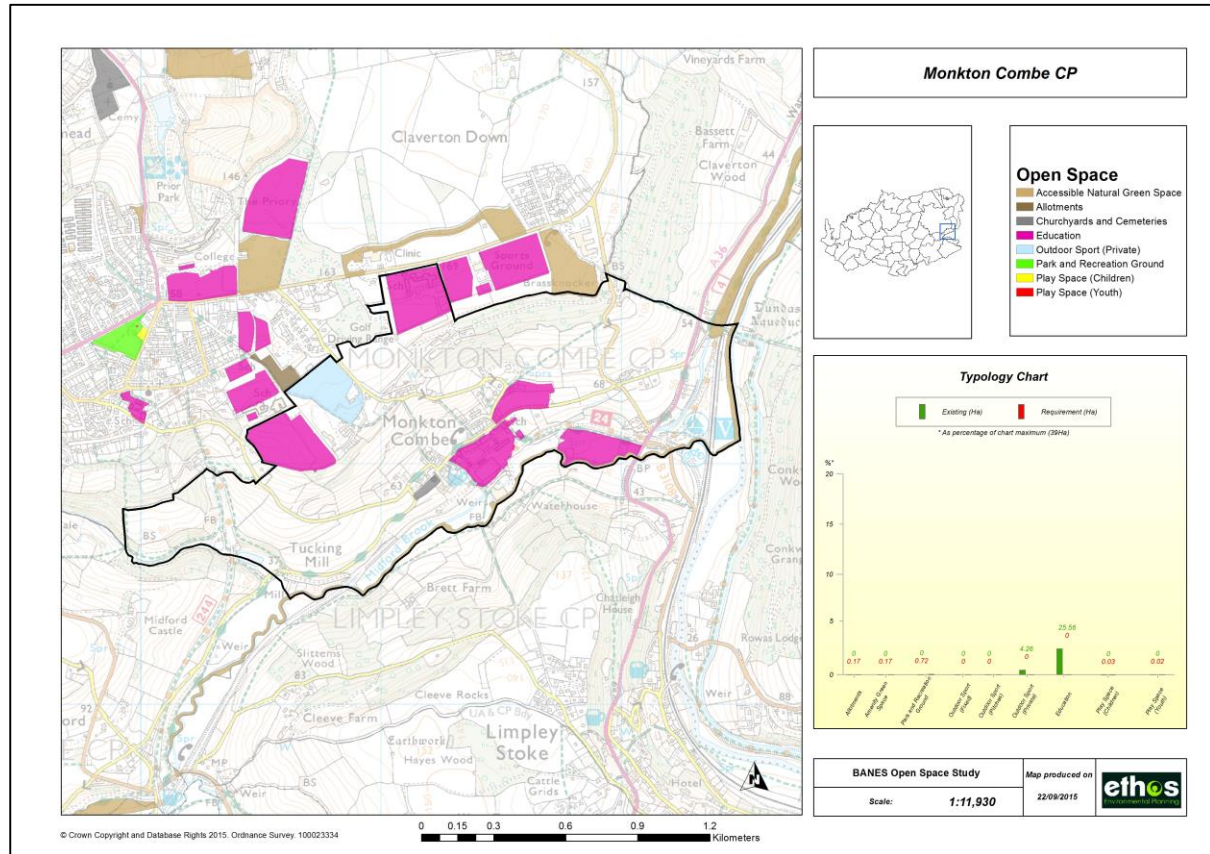


Figure 19 Provision of green space in Parish of Combe Hay

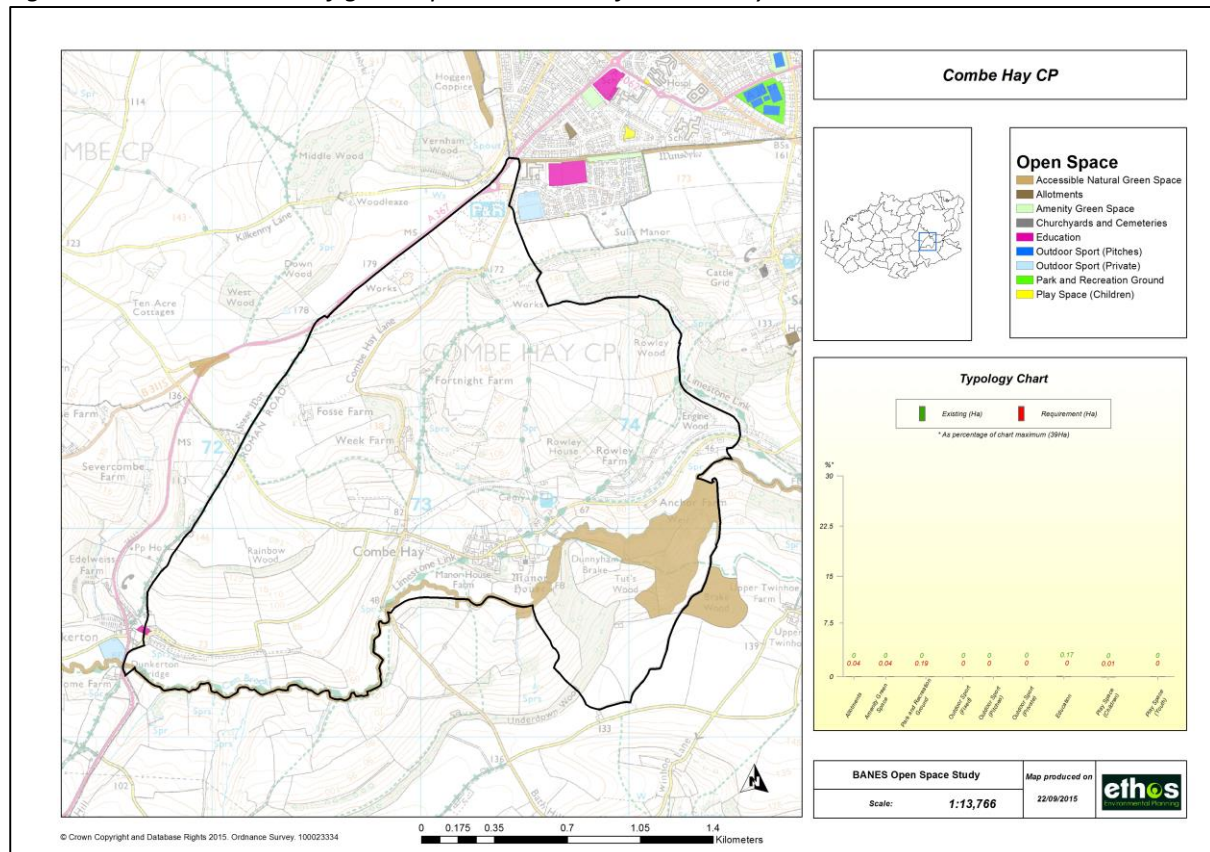


Figure 20 Provision of green space in Parish of St. Catherine

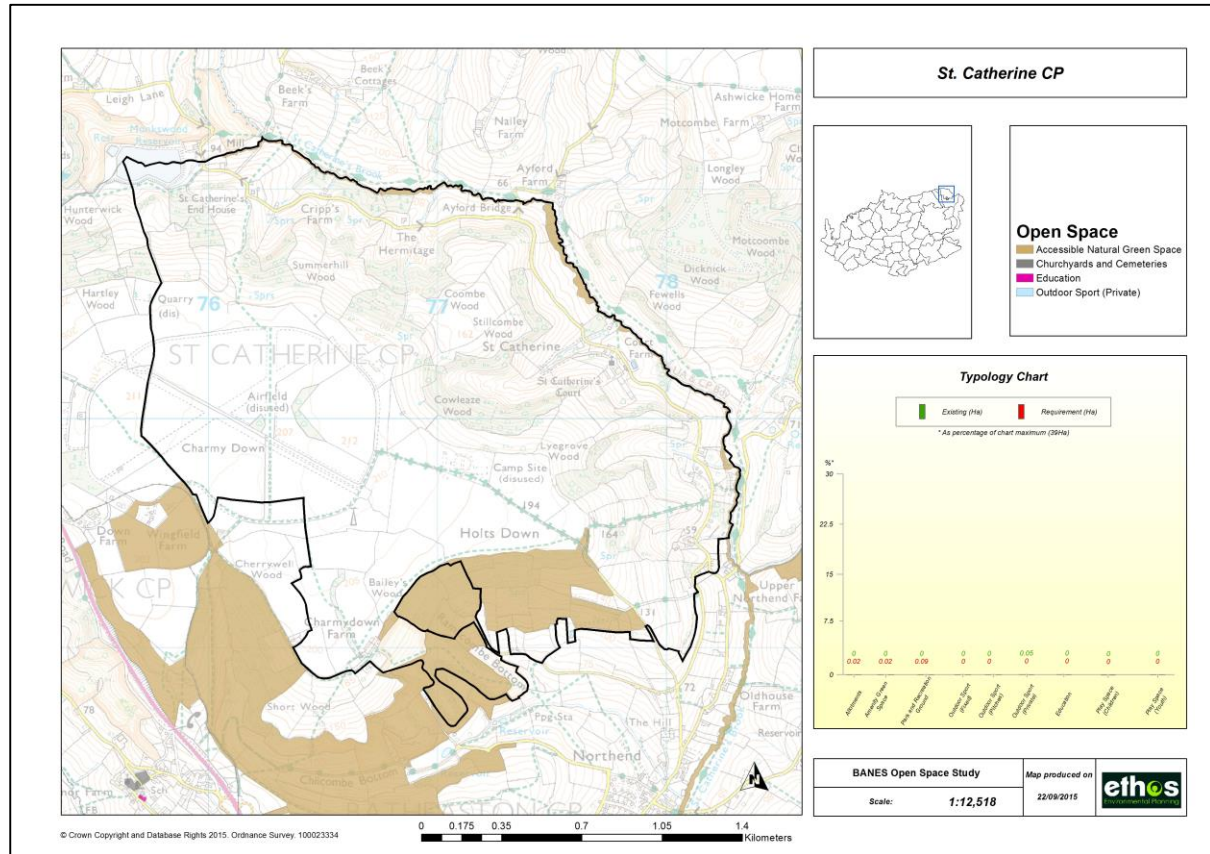


Figure 21 Provision of green space in Parish of Southstoke

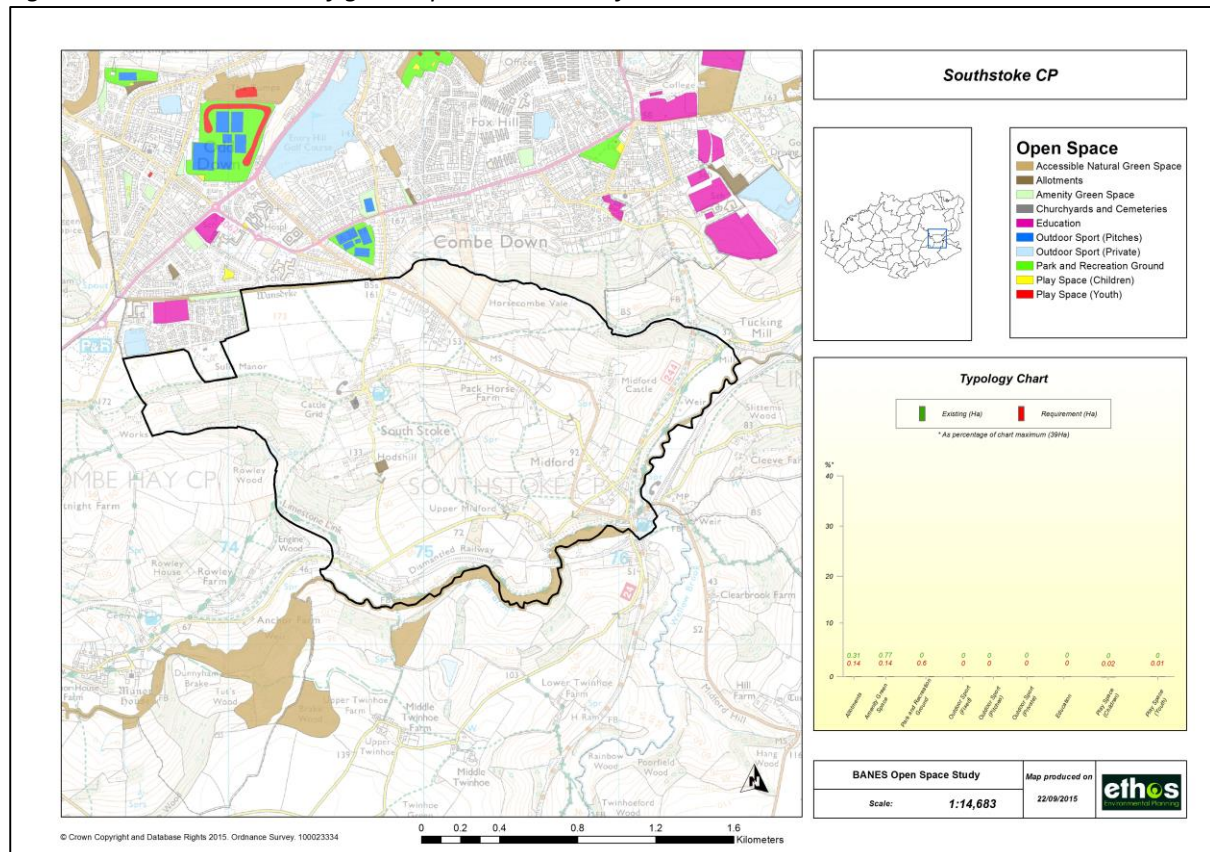
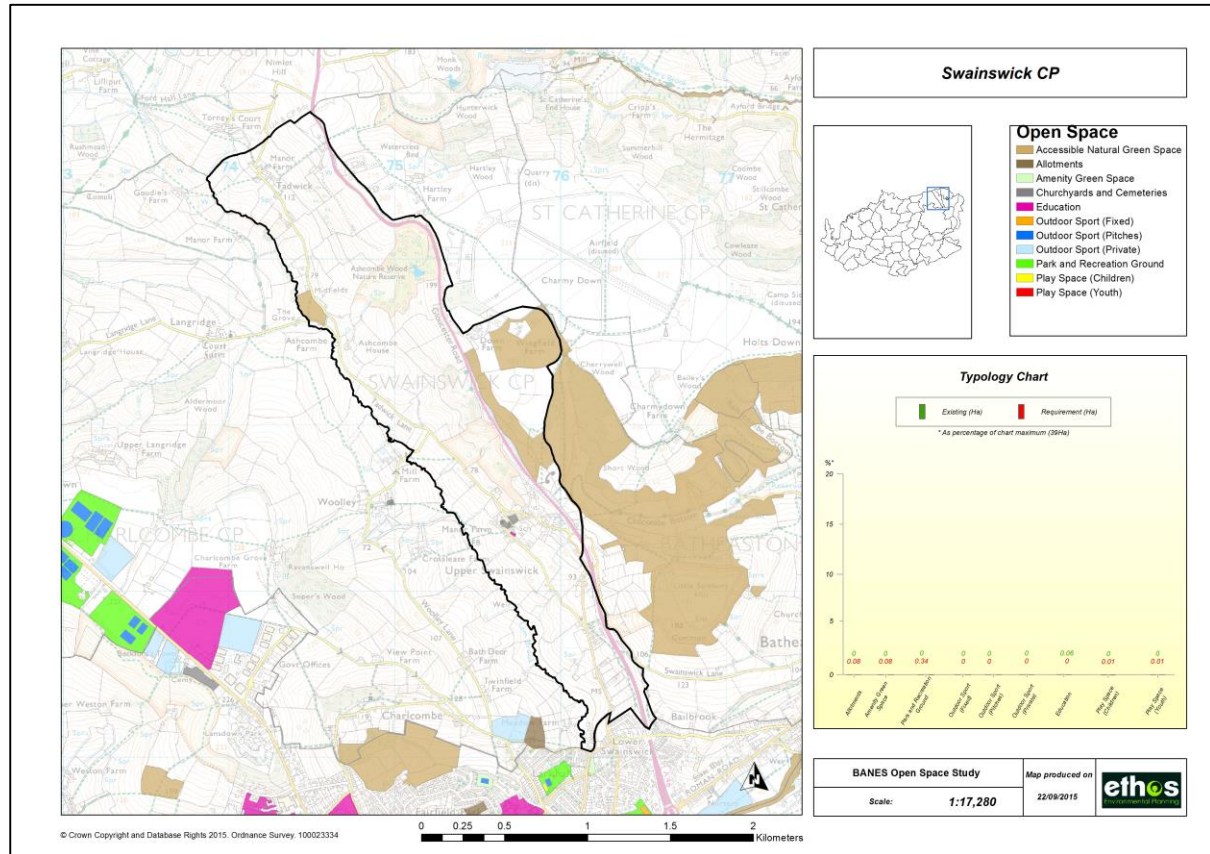


Figure 22 Provision of green space in Parish of Swainswick



3.0 Analysis of existing quantity of Green Space

3.1 Introduction

This section provides an analysis of the existing quantity of green space within the study area. It uses the quantity standards for green space detailed in part 1 of the report, and summarised in table 2.

Table 2 Summary of quantity standards of open space

Typology	Quantity standards (ha/1000 population)
Allotments	0.30
Amenity Green Space	0.30
Parks and Recreation Grounds	1.30
Play Space (Children)	0.05
Play Space (Youth)	0.03
Natural Green Space	1.30 to include natural and amenity green space for new provision
Community Growing Space	None
Historic Parks and Gardens	None, but sites mapped
Churchyards and Cemeteries	None, but sites mapped and quantity analysed
Education	None, but sites mapped and quantity analysed

The figures for 'Park and Recreation Ground (combined)' shown in table 3, comprise the sum of the following typologies:

- Park and Recreation Ground;
- Outdoor Sports Space (Pitches);
- Outdoor Sports Space (Other).

It is the 'combined' figure that is used for the purpose of analysing quantity, as such it is only this figure where required provision and supply is relevant. Figures have been provided for the individual typologies which make up the combined figure for information only, however, there is no supply assessment for these, hence an 'NA' (Not Applicable) is provided. Existing quantity figures are also provided for a number of typologies where there are no standards, as such these also do not show figures for required provision (a figure of 0.00 is provided) and supply is 'NA', these typologies are:

- Historic parks and gardens;
- Education;
- Churchyard and Cemetery.

The following section provides tables showing the current quantitative provision of open space within the study area.

3.2 Current quantity provision of green space

The following tables show the existing provision of green space within the study area. Figures are given for the overall study area, and for individual parishes or wards. In some areas, green spaces may cross parish/ward boundaries and as such the quantity provision is included within both of those parish/ward totals. Therefore, if individual parishes/wards are added together, this may not add up to the overall total figure for the study area. This factor needs to be taken into account when making decisions about local quantity provision.

Table 3 Existing supply of green space across the whole study area

Typology	Existing provision (ha)	Existing provision (ha/1000)	Required provision (ha)	Required provision (ha/1000)	Supply (ha)	Supply (Ha/1000)	Supply
Allotments	4.31	0.37	3.50	0.30	0.81	0.07	SUFFICIENT SUPPLY
Amenity Green Space	3.53	0.30	3.50	0.30	0.03	0.00	SUFFICIENT SUPPLY
Park and Recreation Ground (combined)	38.37	3.28	15.18	1.30	23.19	1.98	SUFFICIENT SUPPLY
<i>Park and Recreation Ground</i>	27.95	2.39	15.18	1.30	12.77	1.09	N/A
<i>Outdoor Sport (Pitches)</i>	10.40	0.89	0.00	0.00	10.40	0.89	N/A
<i>Outdoor Sport (Fixed)</i>	0.02	0.00	0.00	0.00	0.02	0.00	N/A
Outdoor Sport (Private)	120.61	10.33	0.00	0.00	120.61	10.33	N/A
Play Space (Children)	0.52	0.04	0.58	0.05	-0.06	-0.01	UNDER SUPPLY
Play Space (Youth)	0.10	0.01	0.35	0.03	-0.25	-0.02	UNDER SUPPLY
Accessible Natural Green Space	702.55	60.17	11.68	1.00	690.87	59.17	SUFFICIENT SUPPLY
Churchyards and Cemeteries	18.51	1.59	0.00	0.00	18.51	1.59	N/A
Education	65.19	5.58	0.00	0.00	65.19	5.58	N/A

Table 4 Supply of green space (hectares) for each Parish within the study area

PARISH	Allotments	Amenity Green Space	Park and Recreation Ground (combined)	Park and Recreation Ground	Outdoor Sport (Pitches)	Outdoor Sport (Fixed)	Outdoor Sport (Private)	Play Space (Children)	Play Space (Youth)	Accessible Natural Green Space	Education	Churchyards and Cemeteries
Bathampton	0.17	0.30	-1.65	-1.78	0.13	0.00	59.71	-0.02	-0.05	245.45	0.26	0.00
Batheaston	-0.82	-0.24	-2.70	-3.04	0.34	0.00	0.00	-0.03	0.01	336.18	0.16	0.84
Bathford	1.03	-0.02	-0.04	-0.47	0.43	0.00	2.89	-0.04	-0.04	125.62	0.81	0.53
Charlcombe	1.65	-0.13	28.69	19.96	8.73	0.00	46.06	-0.02	-0.01	31.99	22.81	0.13
Claverton	-0.03	-0.03	-0.15	-0.15	0.00	0.00	59.71	-0.01	0.00	217.38	0.00	0.28
Combe Hay	-0.04	-0.04	-0.19	-0.19	0.00	0.00	0.00	-0.01	0.00	104.36	0.17	0.00
Dunkerton	-0.15	-0.15	1.79	1.19	0.60	0.00	1.08	0.02	-0.02	98.50	0.17	0.27
Englishcombe	-0.10	0.45	-0.41	-0.41	0.00	0.00	0.00	-0.02	-0.01	29.42	0.00	13.18
Freshford	-0.17	0.18	-0.72	-0.72	0.00	0.00	0.00	0.00	-0.02	126.83	0.22	0.35
Hinton Charterhouse	-0.15	-0.15	1.37	1.25	0.10	0.02	2.11	0.02	-0.02	3.82	0.00	0.45
Kelston	-0.07	-0.07	-0.32	-0.32	0.00	0.00	0.00	-0.01	-0.01	150.38	0.00	0.30
Monkton Combe	-0.17	-0.17	-0.72	-0.72	0.00	0.00	4.26	-0.03	-0.02	193.82	25.56	0.47
Newton St Loe	-0.17	-0.17	-0.47	-0.54	0.07	0.00	2.86	0.01	-0.02	189.74	14.95	0.36
North Stoke	-0.02	-0.02	-0.09	-0.09	0.00	0.00	38.60	0.00	0.00	138.77	0.00	0.00
Priston	-0.07	-0.07	-0.30	-0.30	0.00	0.00	1.58	-0.01	-0.01	41.50	0.00	0.37
Southstoke	0.17	0.63	-0.60	-0.60	0.00	0.00	0.00	-0.02	-0.01	105.19	0.00	0.17
St Catherine	-0.02	-0.02	-0.09	-0.09	0.00	0.00	0.05	0.00	0.00	162.98	0.00	0.00
Swainswick	-0.08	-0.08	-0.34	-0.34	0.00	0.00	0.00	-0.01	-0.01	156.02	0.06	0.47
Willow	-0.16	-0.16	0.14	0.14	0.00	0.00	0.00	0.10	-0.02	106.53	0.18	0.35

4.0 Analysis of existing access to Green Space

This section provides maps showing access to different types of green space across the study area using the BANES access standards (as summarised in table 5). More detailed maps showing access in each parish/ward have been provided as an electronic appendix.

Table 5 BANES access standards

Typology	Access standard
Allotments	960 metres or 20 minutes' walk time
Amenity Green Space	600 metres or 12-13 minutes' walk time
Parks and Recreation Grounds	600 metres or 12-13 minutes' walk time
Play Space (Children)	480 metres or 10 minutes' walk time
Play Space (Youth)	600 metres or 12-13 minutes' walk time
Natural Green Space	ANGSt and Woodland Trust for analysing existing provision – analysed at District level (see part 1 of report)
Community Growing Spaces	None
Historic Parks and Gardens	None
Churchyards and Cemeteries	None
Education	None

Figure 23 Access to Allotments across the Bathavon Study Area (960 metre buffer)

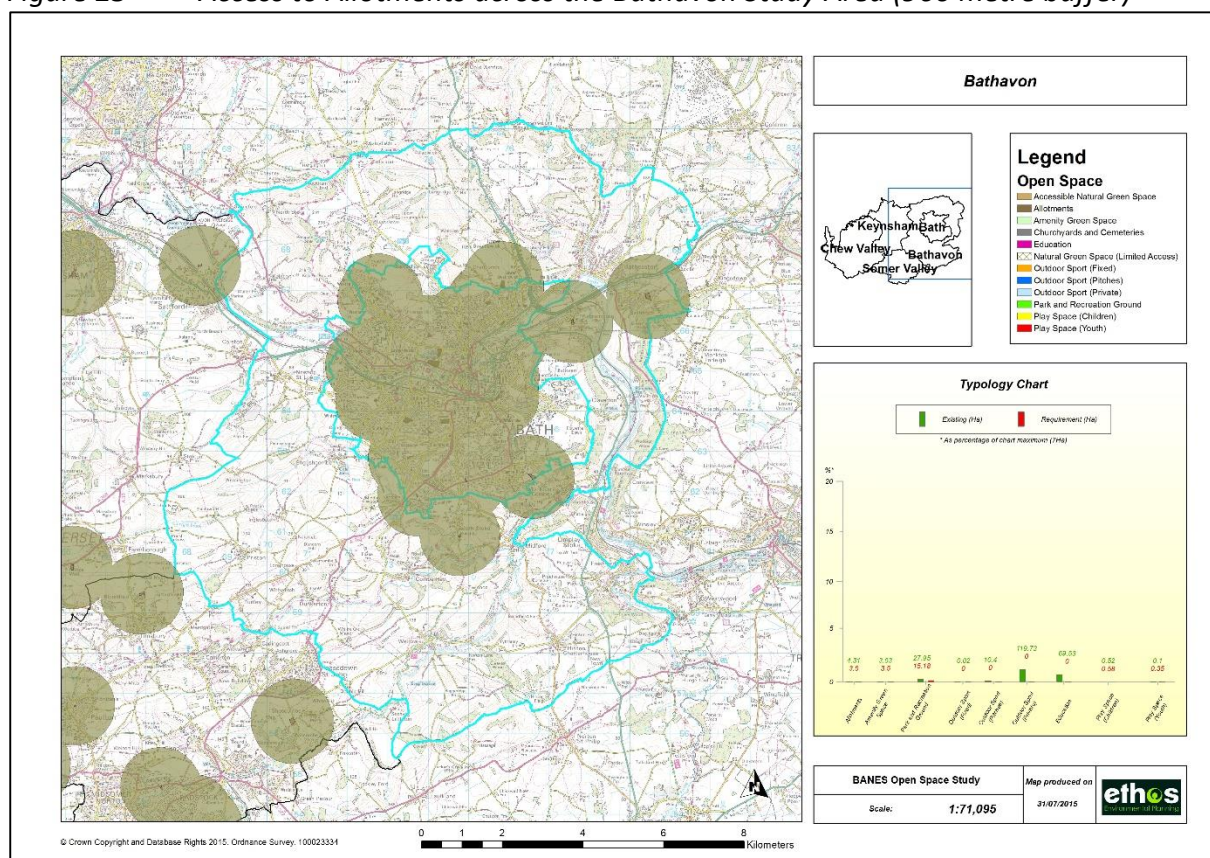


Figure24 Access to Amenity Green Space across the Bathavon Study Area (600 metre buffer)

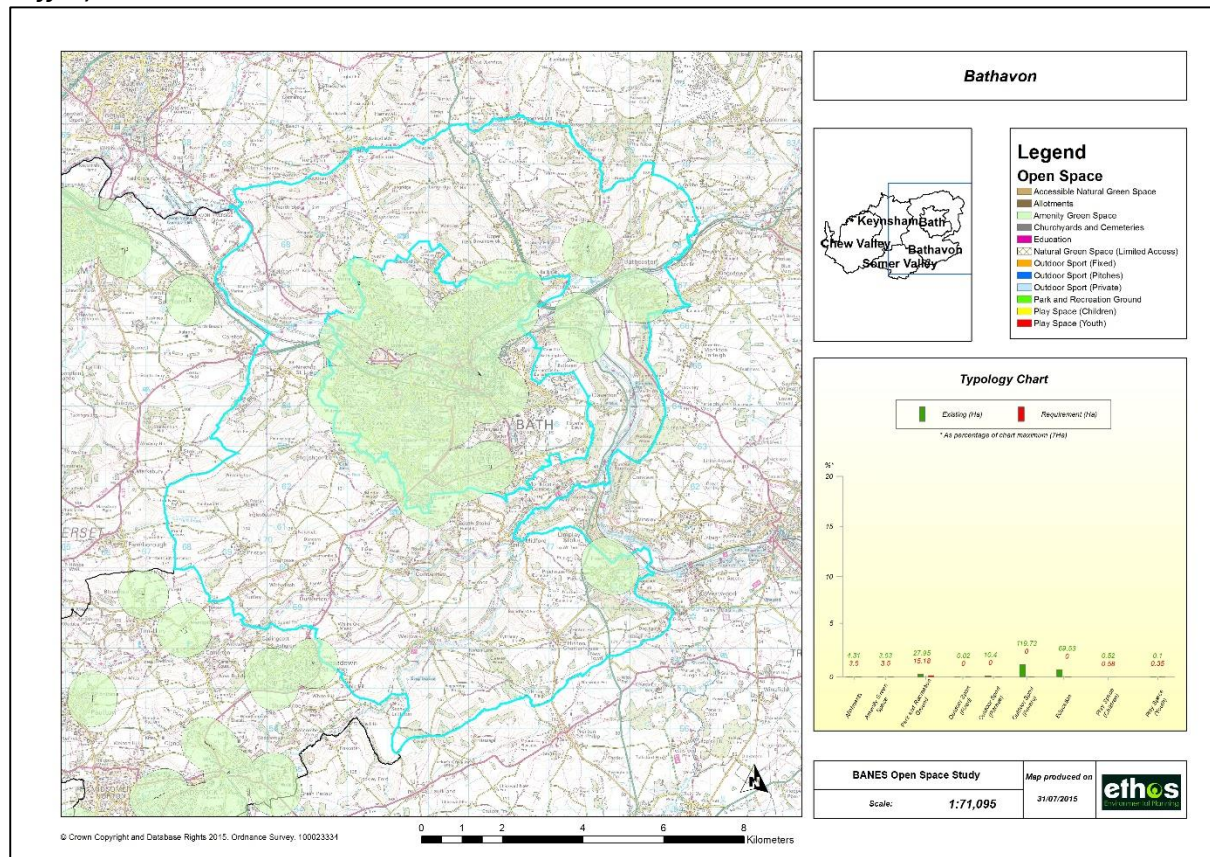


Figure 25 Access to Parks and Recreation Grounds across the Bathavon Study Area (600 metre buffer)

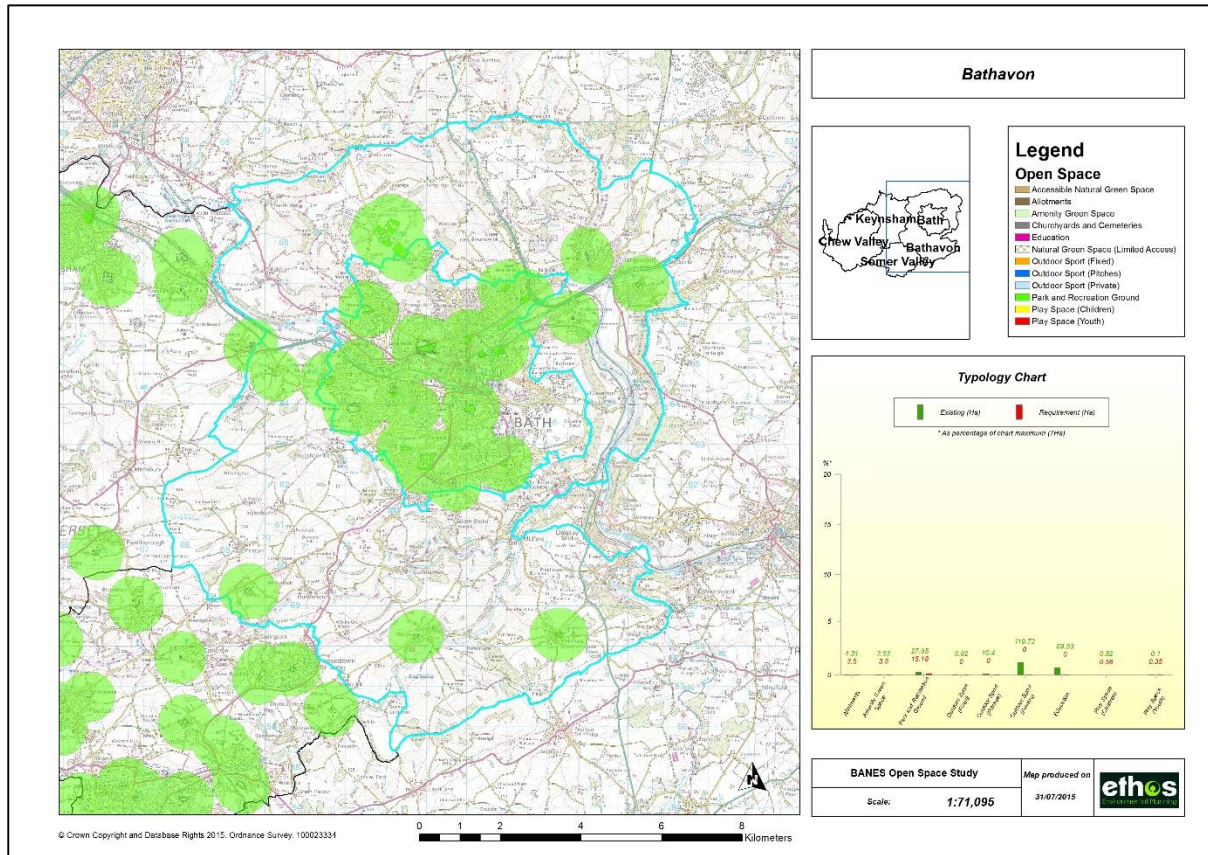


Figure 26 Access to Children's Play Space across the Bath Study Area (480 metre buffer)

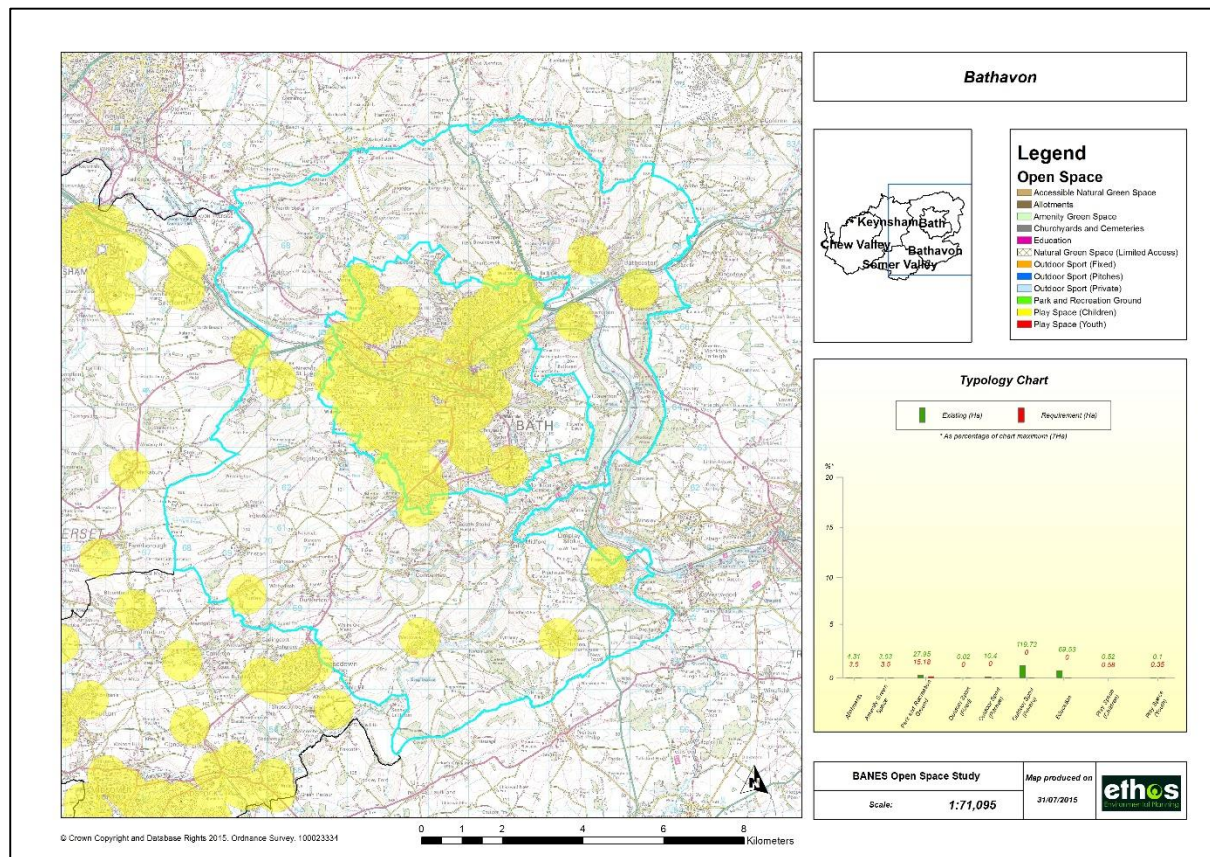


Figure 27 Access to Youth Play Space across the Bath Study Area (600 metre buffer)

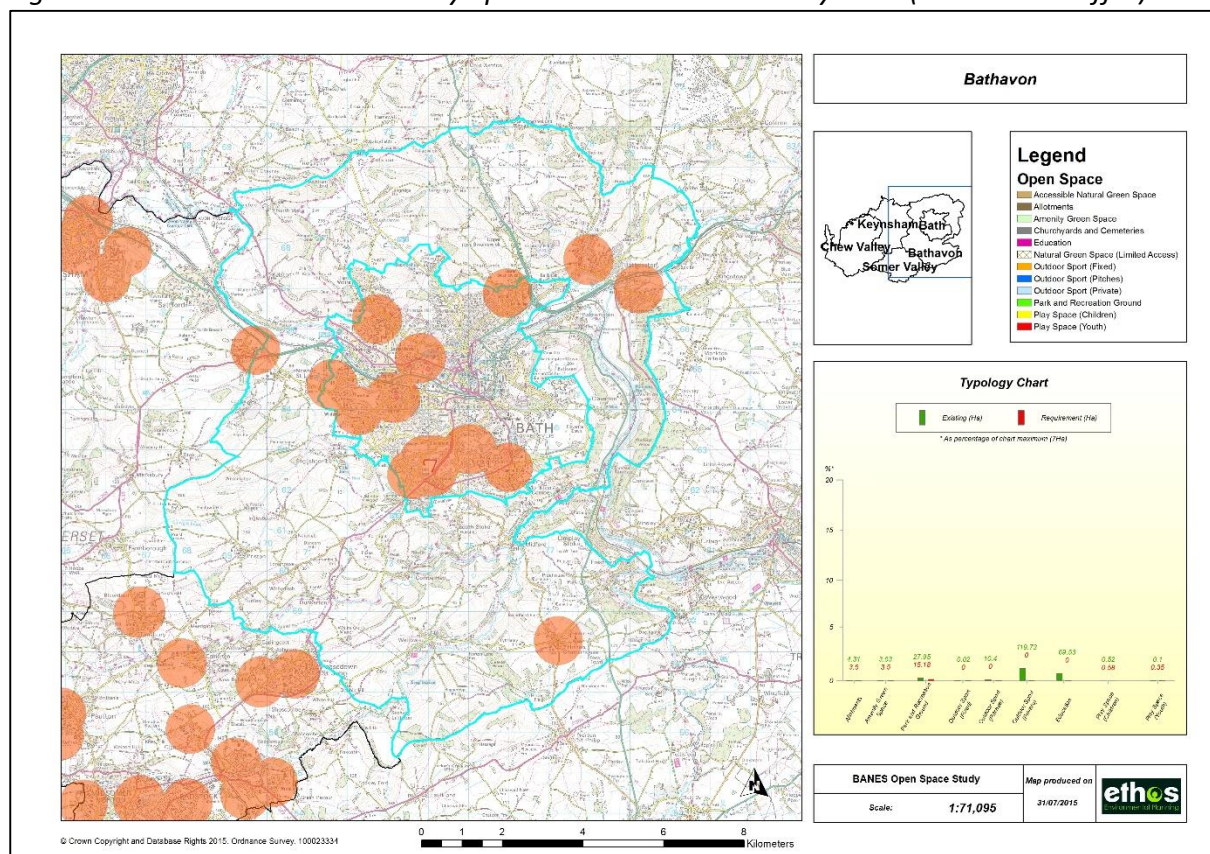


Figure 28 Access to Natural Green Space across the Bathavon Area

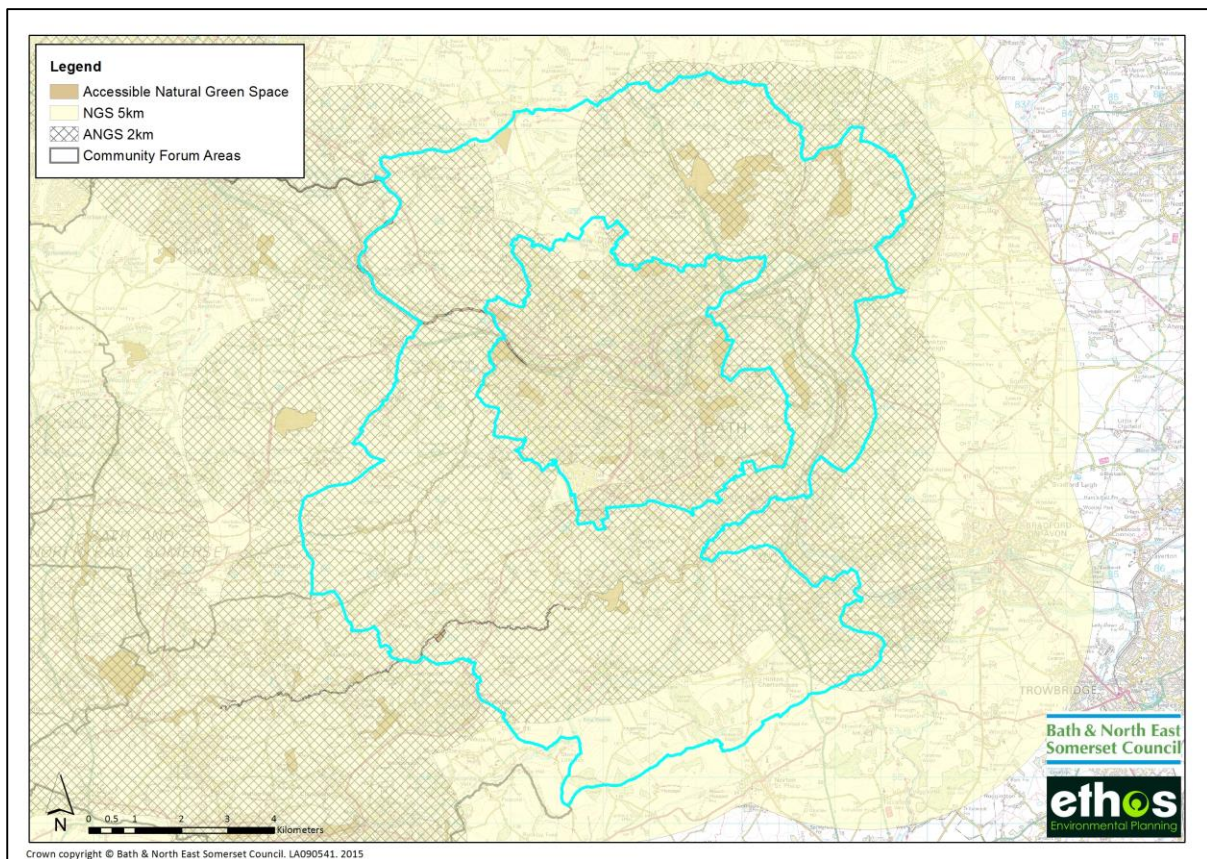
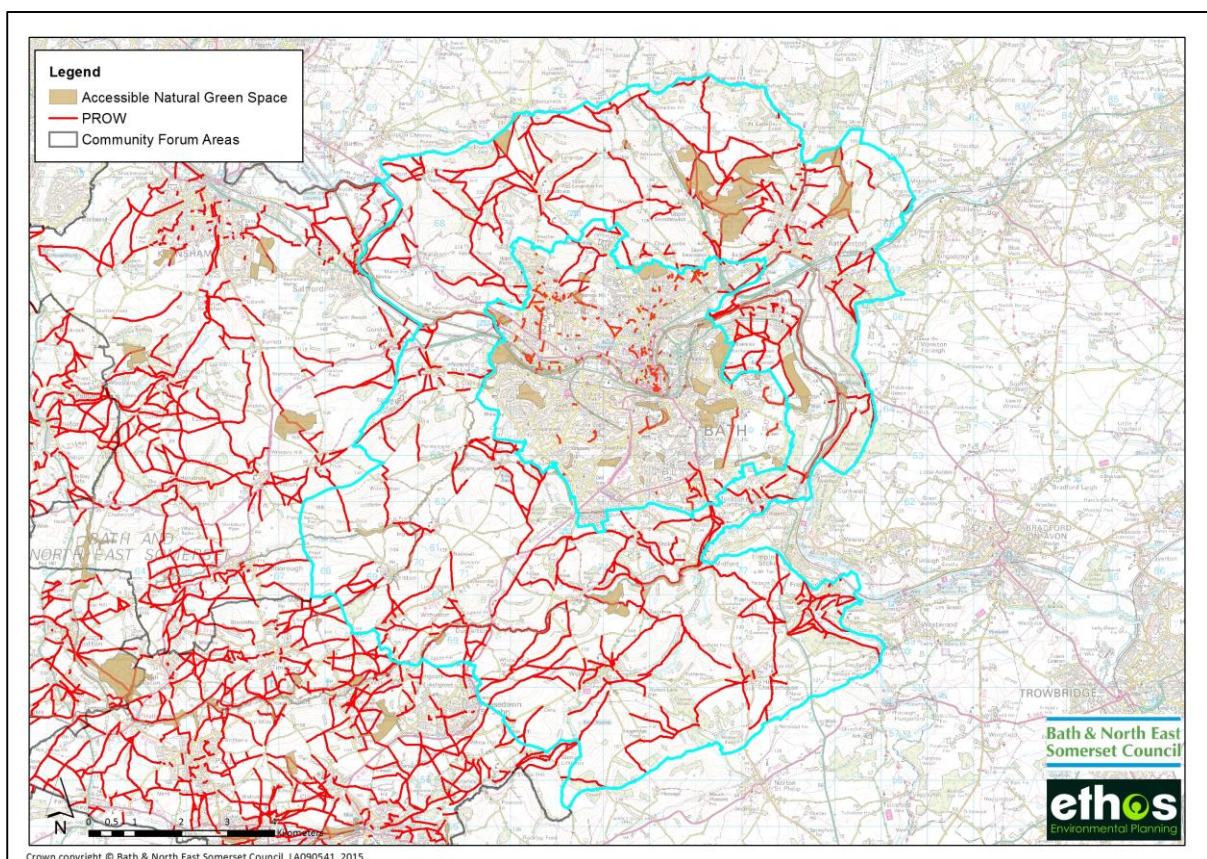


Figure 29 Public Rights of Way across the Bathavon Area



5.0 Summary of quality issues and opportunities for Green Space

5.1 Introduction

This section provides a summary of the quality audit that was undertaken as part of the overall study. Following the initial mapping exercise, site visits were undertaken to assess the quality of sites. It was not possible to survey all sites due to access restrictions, namely certain private sports grounds and education sites. Other sites were also excluded due to limitations of resources, these included small amenity green spaces (<0.15 ha in size), and churchyards and cemeteries.

5.2 Audit methodology

Sites were visited and a photographic record made of key features, along with an assessment of the quality of the site. Quality was assessed using the following criteria which is based on the Green Flag Assessment¹:

- Access;
- Welcoming;
- Management and Maintenance;
- Healthy, safe and secure;
- Community Involvement.

Within each of these main assessment criteria were a number of sub criteria, for example, the Access criteria comprises the following sub criteria:

- **Access - entrances** Access suitable for all abilities;
- **Access - paths** Good access suitable for all abilities;
- **Access** Ease of access between external housing/streets and internal paths.

The details of the quality audit are held within the quality database. Within these area profiles, a summary of the sites included within the quality audit has been provided. Each site is listed and the following provided:

- Site name;
- A brief description of the site;
- Typology;
- Parish/Ward;
- Existing score/rank;
- Potential score rank

¹ <http://www.greenflagaward.org.uk/awards/green-flag-award/>

Existing score/rank

A rank from A – D has been given for the average existing total score as follows:

- The existing quality score of the site is totalled;
- This is divided by the number of criteria for which a score was given to give an average total score;
- The scores are ranked from A – D, where sites with rank 'A' are within the top 25% of quality, and sites with rank 'D' are in the bottom 25% of quality – i.e. sites with rank 'A' have the best existing quality, and sites with rank 'D' have the poorest quality.

Potential score/rank

A rank from A – D has been given for the average gap/potential score as follows:

- The potential quality score of the site is totalled;
- This is divided by the number of criteria for which a score was given to give an average potential score;
- The scores are ranked from A – D, where sites with rank 'A' are within the top 25% of potential improvement and sites with rank 'D' are in the bottom 25% of potential improvement – i.e. sites with rank 'A' have the most potential to be improved, and sites with rank 'D' have the poorest potential to improve.

5.3 Summary of priority sites

Appendix 1 provides a summary of all sites included within the audit. These are extracted from a more detailed audit database which has been made available to the council. This section provides a summary of priority sites i.e. those that have existing low quality (C or D ranked) but with high potential for improvement (A or B ranked). This does not mean that other sites will not be considered for improvement, particularly if very close to a development site, however, it does act as a starting point for prioritisation.

		Potential Score	
		A	B
Existing Rank	D	<i>Poor quality, high potential</i>	<i>Poor quality, moderate potential</i> Tynning Park
	C	<i>Moderate quality, high potential</i> Happy Hippo	<i>Moderate quality, moderate potential</i> Hinton Charterhouse Park The Rhymes Pavilion Hoops, Bathavon

c		
---	--	--

5.4 Site Hierarchies

The previous Green Space Strategy (2007) set out a hierarchy policy in order to help categorise the importance of sites (see Section 3.3.3 for more detail). Within this current study, the Destination and Neighbourhood hierarchy classifications have been taken forward, in order to help identify priority sites for improvement, in combination with the results from the quality audit. It is recognised that Destination and Neighbourhood sites will attract people from a wider area, and therefore enhancements to these sites, rather than provision of new open space may be the preferred option.

The table below includes sites within the Bathavon Area that are either Destination or Neighbourhood sites.

Table 6 Site Hierarchies

Site Name	Typology	Parish	Hierarchy
Lansdown Playing Fields (North and South)	Park and Rec	Charlcombe	Destination
Newton St Loe Rec	Park and Rec	Newston St Loe	Neighbourhood
Tunley Recreation Ground	Park and Rec	Dunkerton	Neighbourhood
Wellow Rec	Park and Rec	Wellow	Neighbourhood
Hinton Charterhouse Park	Park and Rec	Hinton Charterhouse	Neighbourhood
Shoscombe Village Hall Recreation Ground	Park and Rec	Shoscombe	Neighbourhood
Holcombe Lane Rec	Park and Rec	Bathampton	Neighbourhood
The Rhymes Pavilion	Park and Rec	Batheaston	Neighbourhood
Queen Elizabeth II Field	Park and Rec	Bathford	Neighbourhood

6.0 Future need for Green Space

6.1 Overall impact on green space

6.1.1 Projected housing growth

B&NES Planning Policy Team have provided information on the most up-to-date position regarding sites likely to be allocated in the Placemaking Plan that include an element of residential development. This does not include any sites within the Bathavon Area Profile.

The data published in the housing delivery trajectory as part of the Council's Housing & Employment Land Availability Assessment (HELAA) has been used to inform this section of the Bathavon Area Profile. The housing trajectory (2011-2029) for the Rural Areas across the District is 1229 units. Of these, only **46** units have been identified as falling within the Bathavon Profile Area. It is considered that this level of growth will have minimal impact on green space within the area, therefore no further assessment of the impact of population growth on green space has been undertaken. However, the following section does include an assessment of key issues and priorities for the area, which should form the basis for decision making where development does take place.

7.0 Summary of priorities for the area

This section considers the analysis of quality, quantity and access to green space across the study area drawing on previous sections within this report.

1. The area has an existing shortfall of Children's and Youth Play Space, but sufficient provision of Allotments, Amenity Green Space, Parks and Recreation Grounds and Natural Green Space;
2. Opportunities for improving the supply of children's and youth play facilities is best achieved through providing additional facilities on existing sites;
3. Provision of green space is very sporadic, with many individual Parishes have no or very little green space provision. Where green space does exist it is focused around key settlements;
4. Similarly, access to the different types of green space varies across the area and is very sporadic due to the dispersed nature of settlement's across what is essentially a rural area;
5. The lack of proposed development in this area limits opportunities for new provision of green space, therefore, contributions from development would need to be pooled and targeted at improving existing green spaces within the parish where development takes place.

APPENDIX I SUMMARY SCORES FROM QUALITY AUDIT

Parks and Recreation Grounds

<u>Assessment for Parks and Recreation Grounds</u>				GENERAL INFORMATION		RANK	
					Comments and priorities for improvement on the site overall	Existing score (average)	Site Potential (average Gap Score)
ETHOS Ref	Site Name	Parish	Forum Area	General description of site			
BAWW-DUNK-0004-0000	Tunley recreation ground	Dunkerton	Bathavon	Tunley recreation grounds with senior football pitch children's play space and grass bmx track.	Site had a basketball hoop in a car park which is dangerous for anyone wishing to use it. Either basketball hoop needs moving or a sign is needed to warn drivers that children are playing upon entrance. Some damage to wooden seating probably down to use rather than vandalism. Contained play space is dated and offers little play value.	C	C
BANW-BAHA-0004-0000	Holcombe Lane Rec	Bathampton	Bathavon	Park and Rec with small play space and informal football pitch. Play equipment and some fitness apparatus spaced out around the site.	Park was very dated and had several problem areas. The play space had a large selection of apparatus but all of which was dated. There were no signs.	D	B

BASW-SHOS-0001-0000	Shoscombe Village Hall Recreation Ground	Bathavon South Ward	Bathavon	Shoscombe Village Hall Recreation Ground has a cricket pitch, informal mini football pitch and a children's play space which is fenced and includes equipment such as swings, climbing net, bouncy toys, and a slide which is suitable for juniors and toddlers mixed.	There are no dog bins on site and a space where one used to be. There are signs about dog fouling however there is still evidence that dog fouling is occurring over the cricket pitch. There is no provision for teens on site and not much for toddlers. Some of the equipment in the play space is dated and in poor condition, however newer pieces such as the climbing net offer better play value. The cricket pitch is on a big slope with the wicket at the highest point and the boundaries all at lower levels - this is likely to affect the game.	C	C
BASW-WELI-0003-0000	Wellow Rec	Bath Avon South Ward	Bathavon	Building work; new tennis courts, bowls, outdoor gym is proposed and currently being built during audit. Cricket nets, running track on grass, junior football pitch is all there but access is restricted due to construction work.	Hard to survey because so much is being changed. Play swings Gazebo, Big Swing, Seesaw, Tunnels. Climbing Frame, Slide on Hill, Connecting Play, good value, Magic box Pre School Adjacent, Spring toys, Car park. No Bin in play, No dog bins but could be due to construction.	B	D
BASW-HICH-0001-0000	Hinton Charterhouse Park and Cricket club	Bath Avon South Ward	Bathavon	Park and recreation ground with Cricket pitch and club and large car park. There is a play area which includes basketball, swings, slide, spring toys, roundabout and benches.	No bin in play area. Cricket pitch in good condition. Greenspace could be enhanced by installing picnic benches and a wildflower meadow to improve biodiversity. Car park has no dog bins or litter bins. Site is not overlooked but there is CCTV in the car park. Better signage and notice board needed.	B	C
BANW-CHAR-0004-0000	Lansdown South Playing Fields	Bath Avon North Ward	Bathavon	Lots of football pitches, well managed, car park	Large open space with multiple football pitches. All pitches are of a good quality. Ground is reasonably level and the pitches are even. Fields	B	D

					are well looked after and problem areas within the goal mouths is treated with sand.		
BANW-CHAR-0006-0000	Lansdown North Playing Fields	Bath Avon North Ward	Bathavon	Large open space with several football pitches and a cricket pitch.	Large fields with multiple football pitches of varying size. All pitches are of a good quality with a good amount of care taken into maintaining the pitches.	B	D
BANW-BATH-0007-0000	Lansdown South Playing Fields	Bathavon North Ward	Bathavon	an extension of the previous lansdown south field but is seperated by a small bit of land apparently being used for agricultural purposes	Football pitches, no bin, no dog bin, no benches, not enough signage, really nice views over the city	B	D
BANW-BAEA-0002-0000	The Rhymes Pavillion	Bathavon North Ward	Bathavon	Small park and rec with multi facilities such as Muga two junior play spaces and skate park	Paths a bit uneven in need of repair. Toddler play space is dated. Junior play is more modern and in better condition. Old goal posts with one fallen – needs updating, Signs on gates need replacing.	C	C
BANW-BAFO-0005-0000	Queen Elizabeth 2nd	Bathavon North Ward	Bathavon	Small park and rec within a small part of bathford, site consists of; senior football pitch cricket pitch, basketball hoop and junior play space.	Cricket practice nets, poor condition, Broken basketball hoop, needs removing, Tree branch growing in front if it, there is a new one to the side, this should be removed, Newer basketball hoop over concrete, Senior rugby, On a severe slope, floodlit, benches overlooking. Fenced play space, bin, bench, toddler, junior mix	C	D
BAWW-NEWT-0001-0000	Newton St Loe Rec	Newton St Loe	Bathavon	Park with children's play area and informal football pitch in an attractive rural setting	Could install welcome sign at main entrance	B	B

Amenity Green Space and Play Space

<u>Assessment for Play Space</u>										RANK	
				Hard Surface for play/ Kick about area/ Kicking wall (Y/N)	Toddler provision (Y/N)	Junior Provision (Y/N)	Teenage provision Shelter/ wheeled sports etc (Y/N)	Informal Play or space to hang out (Y/N)	Comments and priorities for improvement on the site overall	Existing score (average)	Site Potential (average Gap Score)
ETHOS Ref	Site Name	Parish	Forum Area								
BATH-WALC-0003-0000	Hoops	Walcot	Bathavon	y	n	y	y	n	Site is on a hill and consists of three levels. The middle level has a single kick wall and basketball hoop. The site is covered in leaves and a roundabout underneath a tree is covered in bird mess.	C	D
BATH-WALC-0008-0000	Happy Hippo play space	Walcot	Bathavon	n	y	n	n	n	Small play space in the middle of a private estate. Play space has modern equipment but play is limited due to the small space and small selection of apparatus. Litter bin is overflowed and as a result rubbish is being left around the play space.	C	D

<u>Assessment for Amenity Green Space (and Play Space where provided)</u>				General Description	Comments and priorities for improvement on the site overall	RANK	
ETHOS Ref	Site Name	Date of assessment	Parish			Existing score (average)	Site Potential (average Gap Score)
BANW-BAFO-0003-0000	Manor Drive	20.03.15	Bathford	Amenity with bench, trees, litter bin	No issues	C	D

Allotments

THIS IS THE ASSESSMENT FORM FOR ALLOTMENTS AND SMALL HOLDINGS				General Description	Comments and priorities for improvement on the site overall	RANK	
						Existing score (average)	Site Potential (average Gap Score)
ETHOS Ref	Site Name	Parish	Area Forum				
BANW-BAHA-0001-0000	Down Lane Allotments	Bathampton	Bathavon	Large allotments adjacent to park	Large allotments no need for improvement	B	D
BANW-BAFO-0007-0000	Ashley Road Allotments	Bathford	Bathavon	Allotments well managed, all in use, no access, Gate doesn't lock but sign prevents access.	Better gates upon entrance. Sign posts with the name of the allotments and details on how to get a piece of land.	B	C

Private Sports Grounds

Private Sports Grounds				General Description
ETHOS Ref	Site Name	Parish	Forum Area	
BANW-CHAR-0005-0000	Walcot Old Boys Club	Charlcombe	Bathavon	Walcot Old Boys rugby Football club with 2 senior rugby pitches. Floodlit pitches, well managed, locked gates, no access
BANW-NOST-0001-0000	Lansdown Golf Club	Charlcombe	Bathavon	Self-maintained golf club with 18 holes and onsite changing facilities and clubhouse.
BANW-BAFO-0006-0000	Avon vale RFC	Bathford	Bathavon	Avonvale RFC, senior rugby pitch, no clubhouse, no parking

Accessible Natural Green Space

THIS IS THE ASSESSMENT FORM FOR NATURAL AND SEMI-NATURAL GREENSPACE				General Description	Summary of potential improvements or opportunities for the site	RANK	
						Existing score (average)	Site Potential (average Gap Score)
ETHOS Ref	Site Name	Parish	Forum Area				
BAFO-BANW-0001-0000	River Avon	Crosses a number of parishes	Bath, Bathavon and Keynsham	River Avon accessible via a tow path along its length	None	B	C
BATH-BANW-0005-0000	Kennet and Avon Canal	Crosses a number of parishes	Bath and Bathavon	Kennet and Avon Canal	Potential to enhance biodiversity value.	A	D
BANW-NOST-0006-0000	Woodland off Lansdown Road	North Stoke	Bathavon	Private woods but is freely accessible by the public. Woods joins to the golf club via the cotswald byway.	N/A	B	D
BANW-NOST-0005-0000	Beachwood complex	North stoke	Bathavon	Beachwood complex with signs describing and showing the battle of lansdown.	N/A	B	D
BATH-WEST-0011-0000	Primrose Hill community woodland	Bathavon	Bathavon	Large woodland. Woodlands is well sign posted and has many bins placed around the site.	N/A	B	D

BANW-SWAI-0005-0000	Charmy Down	Swainswick	Bathavon	Large open space with Prows running through the site. Access is limited due to the land being used for farmland. Site is accessed by private road	More informative signage stating the restrictions in routes through the farmlands	C	D
BANW-BAFO-0009-0000	Bannerdown common	Bathford	Bathavon	Common woodland popular amongst dog walkers	N/A	C	D
BANW-BAEA-0009-0000	Oakford Farm and woodland	Batheaston	Bathavon	Woodlands adjacent to Bannerdown common	N/A	C	D
BANW-BATH-0018-0000	Avon and Kennet canal	Bathavon	Bathavon	Canal with PROWs running alongside it.	N/A	C	D