

Site Number 23388-6
Description Darlington Street, South of Sydney Mews
Direction Northbound

Location



6	51.384755546 591386, - 2.3514577182 05219	Darlington Street, South of Sydney Mews	20	NB
---	--	--	----	----

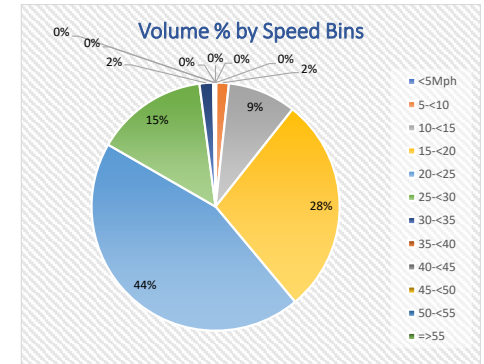
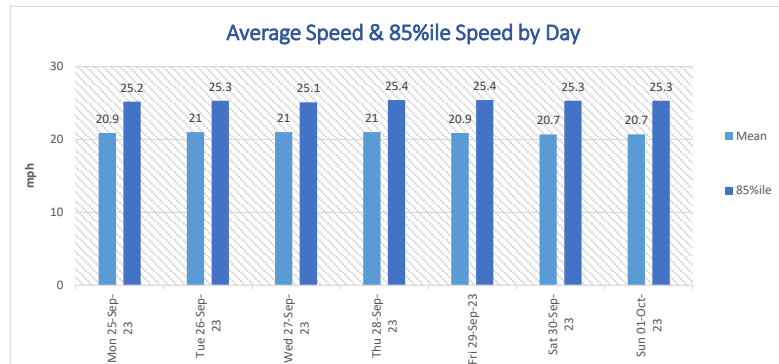
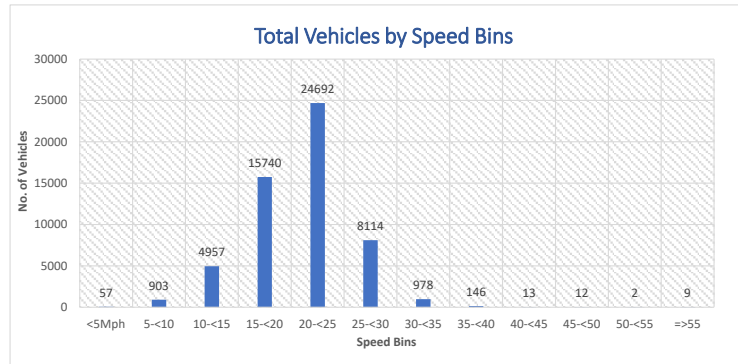


Observations

Site Number 23388-6
Description Darlington Street, South of Sydney Mews
Direction Northbound
Posted Speed Limit(mph) 20mph

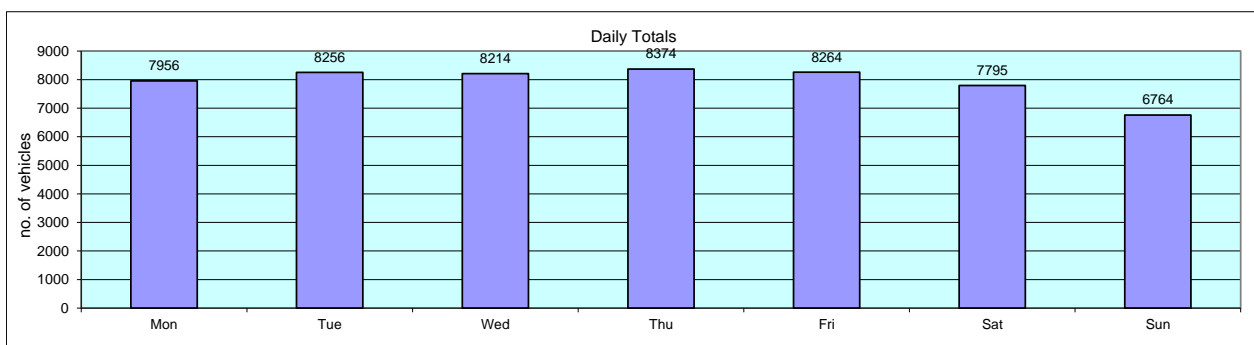
Start Date	End Date	Total Vehicles	5 Day Ave.	7 Day Ave.	Average 85%ile Speed	Average Mean Speed	Standard Dev.
Mon 25-Sep-23	Sun 01-Oct-23	55623	8213	7946	25.3	20.9	4.7

Time Period	Total Vehicles	85%ile Speed	Mean Speed	Stand Dev.	<5Mph	5-<10	10-<15	15-<20	20-<25	25-<30	30-<35	35-<40	40-<45	45-<50	50-<55	=>55
Mon 25-Sep-23	7956	25.2	20.9	4.5	5	103	648	2338	3595	1125	121	18	2	0	0	1
Tue 26-Sep-23	8256	25.3	21	4.5	11	121	663	2293	3806	1198	139	21	1	3	0	0
Wed 27-Sep-23	8214	25.1	21	4.5	8	107	666	2291	3853	1123	141	22	0	2	0	1
Thu 28-Sep-23	8374	25.4	21	4.6	11	119	730	2328	3744	1266	146	25	3	1	0	1
Fri 29-Sep-23	8264	25.4	20.9	5	14	175	754	2252	3610	1259	168	20	1	4	2	5
Sat 30-Sep-23	7795	25.3	20.7	4.8	6	152	786	2329	3201	1160	132	23	3	2	0	1
Sun 01-Oct-23	6764	25.3	20.7	4.8	2	126	710	1909	2883	983	131	17	3	0	0	0
Total Vehicles																
[--]	55623	25.3	20.9	4.7	57	903	4957	15740	24692	8114	978	146	13	12	2	9



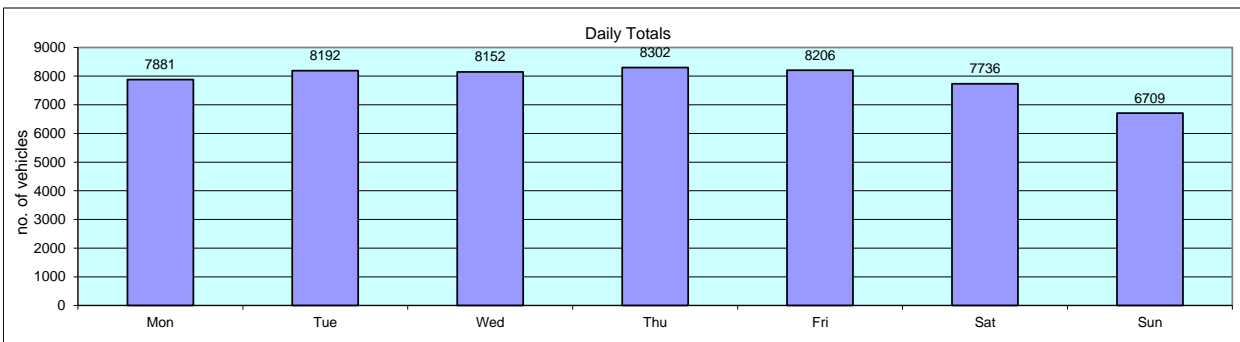
Site Number 23388-6
Description Darlington Street, South of Sydney Mews
Direction Northbound

Time	Mon 25-Sep-23	Tue 26-Sep-23	Wed 27-Sep-23	Thu 28-Sep-23	Fri 29-Sep-23	Sat 30-Sep-23	Sun 01-Oct-23	Weekday Av.	7day Av.
0100	29	0	0	0	0	1	0	6	4
0200	16	0	0	0	0	1	0	3	2
0300	22	0	0	0	0	0	0	4	3
0400	29	0	0	1	0	0	0	6	4
0500	26	0	0	0	0	0	0	5	4
0600	77	1	0	0	0	0	1	16	11
0700	229	0	0	0	2	1	0	46	33
0800	456	3	8	7	5	4	1	96	69
0900	578	3	7	4	4	2	5	119	86
1000	487	5	3	6	3	8	7	101	74
1100	572	6	3	3	4	6	8	118	86
1200	532	3	4	4	5	5	5	110	80
1300	563	4	5	4	5	8	7	116	85
1400	555	5	2	3	8	5	5	115	83
1500	485	4	3	2	1	3	1	99	71
1600	570	1	1	5	6	1	4	117	84
1700	626	1	4	7	3	5	5	128	93
1800	598	2	5	8	3	1	4	123	89
1900	469	7	7	8	7	3	1	100	72
2000	405	8	4	5	0	2	1	84	61
2100	238	4	4	1	0	1	0	49	35
2200	231	4	1	3	0	1	0	48	34
2300	113	2	0	1	2	0	0	24	17
2400	50	1	1	0	0	1	0	10	8
08-09	578	3	7	4	4	2	5	119	86
17-18	598	643	612	615	579	597	538	609	597
07-19	6491	6621	6490	6601	6647	6199	5649	6570	6385
07-23	7478	7761	7683	7828	7699	7186	6390	7690	7432
00-24	7956	8256	8214	8374	8264	7795	6764	8213	7946



Site Number 23388-6
Description Darlington Street, South of Sydney Mews
Direction Northbound

Volumetric Summary - Motorised Vehicles									
Time	Mon 25-Sep-23	Tue 26-Sep-23	Wed 27-Sep-23	Thu 28-Sep-23	Fri 29-Sep-23	Sat 30-Sep-23	Sun 01-Oct-23	Weekday Av.	7day Av.
0100	29	26	24	44	36	91	93	32	49
0200	16	21	37	33	32	67	46	28	36
0300	22	25	14	25	29	53	53	23	32
0400	29	34	31	33	30	36	50	31	35
0500	26	32	22	29	26	44	30	27	30
0600	77	68	72	67	66	51	25	70	61
0700	229	226	247	215	207	99	36	225	180
0800	451	476	498	503	470	163	102	480	380
0900	567	537	558	525	546	336	185	547	465
1000	483	530	501	505	503	509	398	504	490
1100	569	549	512	555	538	582	497	545	543
1200	531	535	532	524	591	599	561	543	553
1300	560	538	511	588	575	584	591	554	564
1400	550	547	508	561	571	618	609	547	566
1500	481	535	498	500	597	556	577	522	535
1600	563	584	625	591	579	530	567	588	577
1700	615	628	569	577	547	627	570	587	590
1800	587	641	607	607	576	596	534	604	593
1900	463	477	519	504	500	448	405	493	474
2000	403	429	396	433	384	340	306	409	384
2100	236	275	273	341	294	262	194	284	268
2200	231	272	279	244	197	186	138	245	221
2300	113	146	236	199	175	195	102	174	167
2400	50	61	83	99	137	164	40	86	91
08-09	567	537	558	525	546	336	185	547	465
17-18	587	641	607	607	576	596	534	604	593
07-19	6420	6577	6438	6540	6593	6148	5596	6514	6330
07-23	7403	7699	7622	7757	7643	7131	6336	7625	7370
00-24	7881	8192	8152	8302	8206	7736	6709	8147	7883



Site Number 23388-6
Description Darlington Street, South of Sydney Mews
Direction Northbound

25-Sep-23

Table with columns: Time, Total Motorised Vehicles, Totals, Cycles, Motor Cycles, Number Vehicle Classes, DFT 2010 + COBA Scheme, Percentage Vehicle classes, DFT 2010 + COBA Scheme, Vehicle Speed, P-Tile, Average Speed, Standard deviation. Rows include time intervals from 0015 to 2400.

Site Number 23388-6
Description Darlington Street, South of Sydney Mews
Direction Northbound

26-Sep-23

Table with columns: Time, Total Motorised Vehicles, Cycles, Motor Cycles, Number Vehicle Classes DFT 2010 + COBA Scheme (Car, LGV, 2 Axle Rigid, 3 Axle Rigid, 4 Axle Rigid, 3 Axle Artic, 4 Axle Artic, 5+ Axle Artic, Buses), Percentage Vehicle classes DFT 2010 + COBA Scheme (Cycles, Motor Cycles, Cars, LGV, 2 Axle Rigid, 3 Axle Rigid, 4 Axle Rigid, 3 Axle Artic, 4 Axle Artic, 5+ Axle Artic, Buses), Vehicle Speed (MPH 0-95), P-Tile 85%, Average Speed, Standard deviation.

Site Number 23388-6
Description Darlington Street, South of Sydney Mews
Direction Northbound

28-Sep-23

Table with columns: Time, Total Motorised Vehicles, Cycles, Motor Cycles, Number Vehicle Classes (Car, LGV, 2 Axle Rigid, 3 Axle Rigid, 4 Axle Rigid, 3 Axle Artic, 4 Axle Artic, 5+ Axle Artic, Buses), Percentage Vehicle classes (Cycles, Motor Cycles, Cars, LGV, 2 Axle Rigid, 3 Axle Rigid, 4 Axle Rigid, 3 Axle Artic, 4 Axle Artic, 5+ Axle Artic, Buses), Vehicle Speed (MPH 0-95), P-Tile 85%, Average Speed, Standard deviation.

Site Number 23388-6
Description Darlington Street, South of Sydney Mews
Direction Northbound

29-Sep-23

Table with columns for Time, Total Motorised Vehicles, Cycles, Motor Cycles, Number Vehicle Classes (Car, LGV, 2 Axle Rigid, 3 Axle Rigid, 4 Axle Rigid, 3 Axle Artic, 4 Axle Artic, 5+ Axle Artic, Buses), Percentage Vehicle classes DFT 2010 + COBA Scheme, Vehicle Speed (MPH 0-95), P-Tile 85%, Average Speed, and Standard deviation. The table contains 33 rows of data.

Site Number 23388-6
Description Darlington Street, South of Sydney Mews
Direction Northbound

30-Sep-23

Table with columns: Time, Total Motorised Vehicles, Totals, Cycles, Motor Cycles, Number Vehicle Classes DFT 2010 + COBA Scheme (Car, LGV, 2 Axle Rigid, 3 Axle Rigid, 4 Axle Rigid, 3 Axle Artic, 4 Axle Artic, 5+ Axle Artic, Buses), Percentage Vehicle classes DFT 2010 + COBA Scheme (Cycles, Motor Cycles, Cars, LGV, 2 Axle Rigid, 3 Axle Rigid, 4 Axle Rigid, 3 Axle Artic, 4 Axle Artic, 5+ Axle Artic, Buses), Vehicle Speed (MPH 0-95), P-Tile 85%, Average Speed, Standard deviation.

Site Number 23388-6
Description Darlington Street, South of Sydney Mews
Direction Northbound

01-Oct-23

Table with columns: Time, Total Motorised Vehicles, Cycles, Motor Cycles, Number Vehicle Classes (Car, LGV, 2 Axle Rigid, 3 Axle Rigid, 4 Axle Rigid, 3 Axle Artic, 4 Axle Artic, 5+ Axle Artic, Buses), Percentage Vehicle classes, Vehicle Speed (MPH 0-95), P-Tile 85%, Average Speed, Standard deviation.

Site Number 23388-6
 Description Darlington Street, South of Sydney Mews
 Direction Northbound

Grand Total

Time	Total Motorised Vehicles	Totals	Cycles	Motor Cycles	Number Vehicle Classes DFT 2010 + COBA Scheme										Percentage Vehicle classes DFT 2010 + COBA Scheme										Vehicle Speed													P-Tile 85%	Average Speed	Standard deviation							
					Car	LGV	2 Axle Rigid	3 Axle Rigid	4 Axle Rigid	3 Axle Artic.	4 Axle Artic.	5+ Axle Artic.	Buses	Cycles	Motor Cycles	Cars	LGV	2 Axle Rigid	3 Axle Rigid	4 Axle Rigid	3 Axle Artic.	4 Axle Artic.	5+ Axle Artic.	Buses	MPH 0 <5mph	MPH 5 <10mph	MPH 10 <15mph	MPH 15 <20mph	MPH 20 <25mph	MPH 25 <30mph	MPH 30 <35mph	MPH 35 <40mph	MPH 40 <45mph	MPH 45 <50mph	MPH 50 <55mph	MPH 55 <60mph	MPH 60 <65mph				MPH 65 <70mph	MPH 70 <75mph	MPH 75 <80mph	MPH 80 <85mph	MPH 85 <90mph	MPH 90 <95mph	MPH 95 <100mph
--	55178	55623	445	801	46244	6085	1242	112	65	222	12	178	217	0.8	1.44	83.14	10.94	2.233	0.201	0.117	0.399	0.022	0.32	0.39	57	903	4957	15740	24692	8114	978	146	13	12	2	3	2	0	1	1	0	1	0	1	25.3	20.9	4.7

Site Number 23398-6
Description Darlington Street, South of Sydney Mews
Direction Northbound

Grand Total

Table with columns for Time, Total Motorised Vehicles, Totals, Cycles, Motor Cycles, Car, LGV, 2 Axle Rigid, 3 Axle Rigid, 4 Axle Rigid, 3 Axle Artic, 4 Axle Artic, 5+ Axle Artic, Buses, Cycles, Motor Cycles, Cars, LGV, 2 Axle Rigid, 3 Axle Rigid, 4 Axle Rigid, 3 Axle Artic, 4 Axle Artic, 5+ Axle Artic, Buses, and Vehicle Speed (MPH 0-95).