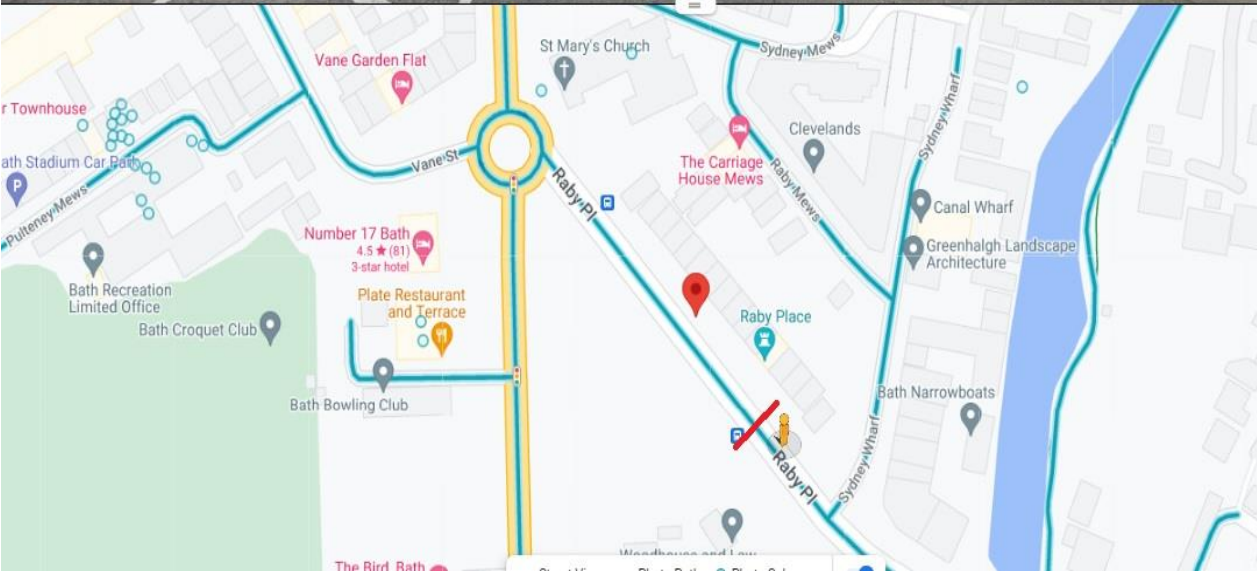
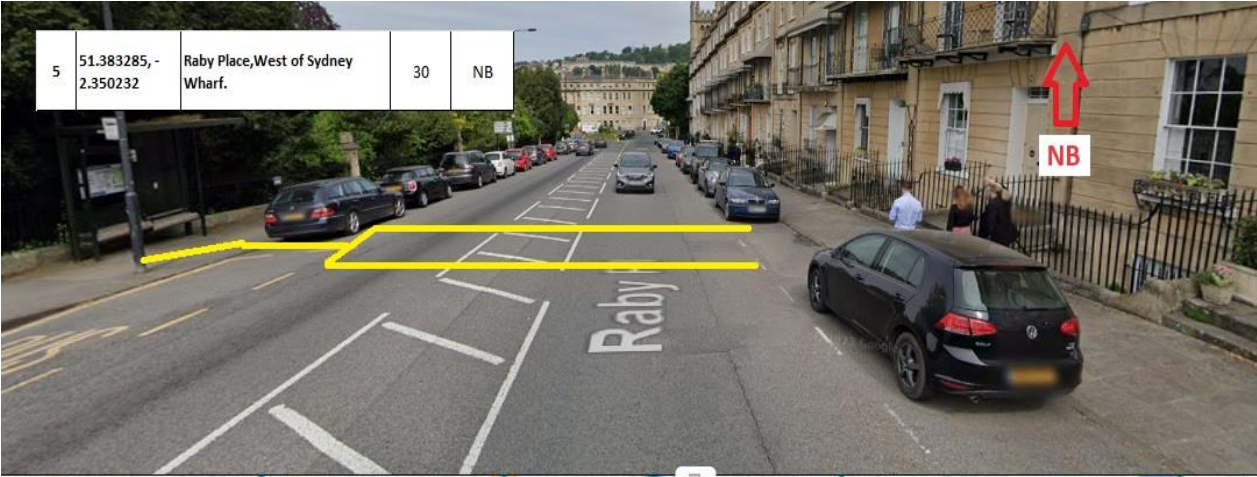


Site Number 23388-5
Description Raby Place, West of Sydney Wharf
Direction Northbound

Location

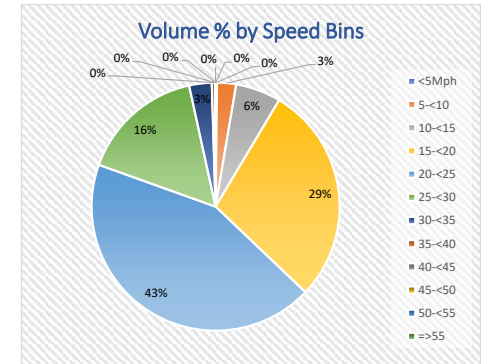
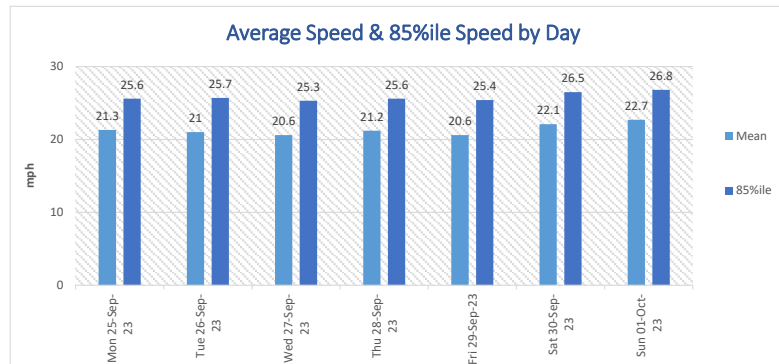
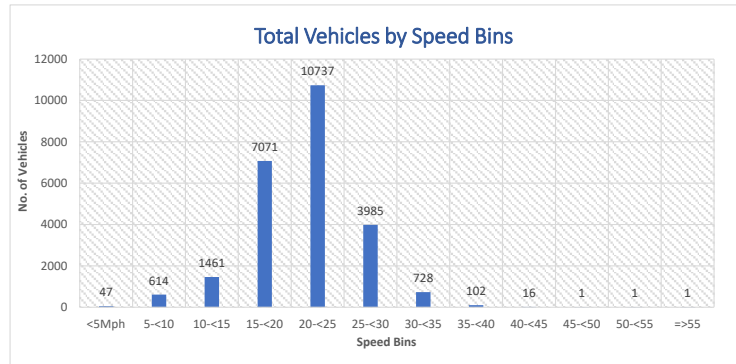


Observations

Site Number 23388-5
Description Raby Place, West of Sydney Wharf
Direction Northbound
Posted Speed Limit(mph) 30mph

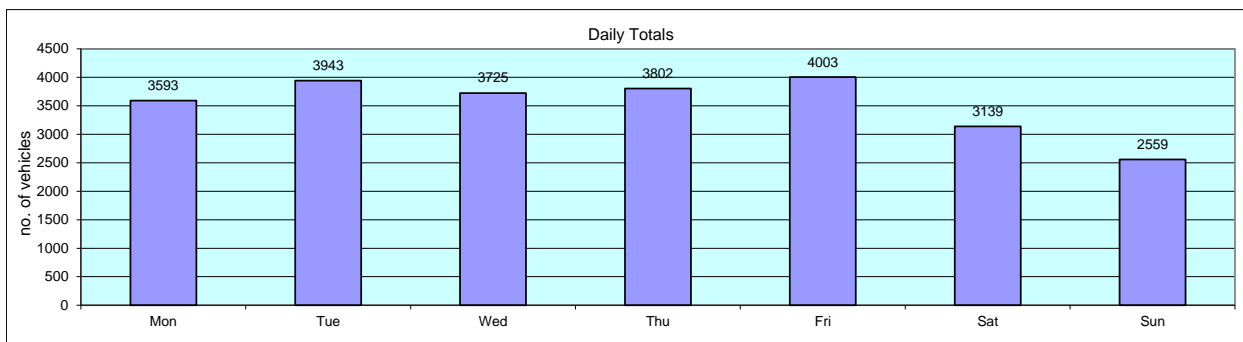
Start Date	End Date	Total Vehicles	5 Day Ave.	7 Day Ave.	Average 85%ile Speed	Average Mean Speed	Standard Dev.
Mon 25-Sep-23	Sun 01-Oct-23	24764	3813	3538	25.8	21.3	4.9

Time Period	Total Vehicles	85%ile Speed	Mean Speed	Stand Dev.	<5Mph	5-<10	10-<15	15-<20	20-<25	25-<30	30-<35	35-<40	40-<45	45-<50	50-<55	=>55
Mon 25-Sep-23	3593	25.6	21.3	4.7	2	68	197	1047	1592	572	104	11	0	0	0	0
Tue 26-Sep-23	3943	25.7	21	5.1	8	119	258	1158	1668	603	118	9	1	0	0	1
Wed 27-Sep-23	3725	25.3	20.6	5.1	15	139	267	1139	1539	532	77	15	2	0	0	0
Thu 28-Sep-23	3802	25.6	21.2	4.6	2	54	265	1124	1684	573	85	12	2	0	1	0
Fri 29-Sep-23	4003	25.4	20.6	5.3	17	199	285	1140	1672	585	93	12	0	0	0	0
Sat 30-Sep-23	3139	26.5	22.1	4.6	1	23	134	864	1374	587	137	14	5	0	0	0
Sun 01-Oct-23	2559	26.8	22.7	4.5	2	12	55	599	1208	533	114	29	6	1	0	0
Total Vehicles																
[--]	24764	25.8	21.3	4.9	47	614	1461	7071	10737	3985	728	102	16	1	1	1



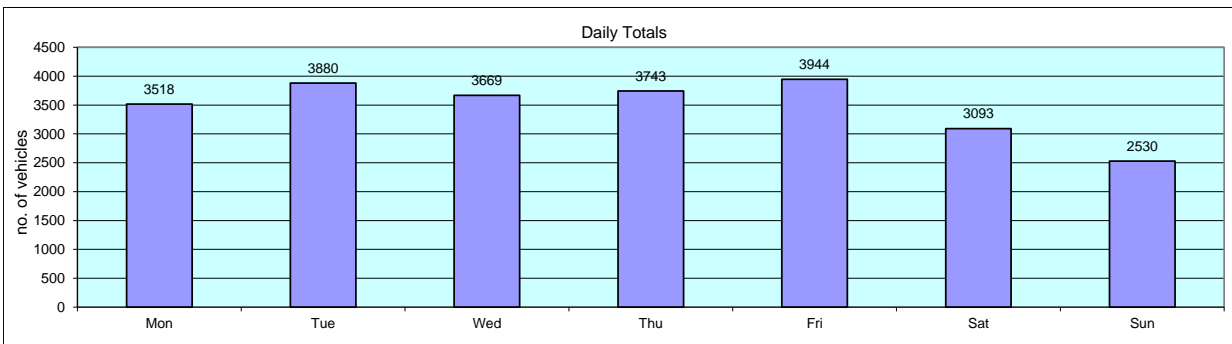
Site Number 23388-5
Description Raby Place, West of Sydney Wharf
Direction Northbound

Time	Mon 25-Sep-23	Tue 26-Sep-23	Wed 27-Sep-23	Thu 28-Sep-23	Fri 29-Sep-23	Sat 30-Sep-23	Sun 01-Oct-23	Weekday Av.	7day Av.
0100	12	0	0	0	0	1	0	2	2
0200	20	0	0	0	0	0	0	4	3
0300	20	0	0	0	0	0	0	4	3
0400	16	0	0	0	0	0	0	3	2
0500	14	0	0	0	0	0	0	3	2
0600	9	1	0	1	0	0	1	2	2
0700	32	1	1	0	2	2	0	7	5
0800	127	2	3	3	1	2	1	27	20
0900	255	5	3	5	7	2	3	55	40
1000	225	2	3	3	1	4	1	47	34
1100	251	6	2	0	4	7	4	53	39
1200	230	3	2	3	2	3	0	48	35
1300	254	1	1	2	1	2	3	52	38
1400	243	0	5	5	2	5	3	51	38
1500	271	1	7	4	6	1	2	58	42
1600	267	2	6	6	8	3	1	58	42
1700	333	9	1	8	7	7	5	72	53
1800	305	9	6	8	4	2	3	66	48
1900	218	9	6	8	11	2	1	50	36
2000	193	4	4	3	1	1	0	41	29
2100	125	4	3	0	1	1	0	27	19
2200	87	3	3	0	0	1	1	19	14
2300	54	1	0	0	1	0	0	11	8
2400	32	0	0	0	0	0	0	6	5
08-09	255	5	3	5	7	2	3	55	40
17-18	305	346	326	333	300	225	178	322	288
07-19	2979	3266	3113	3095	3318	2486	2056	3154	2902
07-23	3438	3775	3573	3615	3795	2871	2356	3639	3346
00-24	3593	3943	3725	3802	4003	3139	2559	3813	3538



Site Number 23388-5
Description Raby Place, West of Sydney Wharf
Direction Northbound

Volumetric Summary - Motorised Vehicles									
Time	Mon 25-Sep-23	Tue 26-Sep-23	Wed 27-Sep-23	Thu 28-Sep-23	Fri 29-Sep-23	Sat 30-Sep-23	Sun 01-Oct-23	Weekday Av.	7day Av.
0100	12	25	17	36	28	54	51	24	32
0200	20	21	18	20	17	49	31	19	25
0300	20	27	19	31	20	40	38	23	28
0400	16	13	10	13	20	27	28	14	18
0500	14	9	9	7	6	13	16	9	11
0600	9	14	11	15	15	13	8	13	12
0700	32	40	39	30	32	16	15	35	29
0800	124	120	147	124	130	59	31	129	105
0900	251	319	281	303	353	118	71	301	242
1000	223	277	239	225	232	195	132	239	218
1100	248	255	243	263	223	245	191	246	238
1200	225	260	236	241	259	257	243	244	246
1300	250	252	230	245	295	260	210	254	249
1400	240	243	237	236	278	257	212	247	243
1500	262	242	244	201	277	226	207	245	237
1600	262	288	311	265	352	219	186	296	269
1700	319	379	327	375	315	213	194	343	303
1800	295	337	320	325	296	223	175	315	282
1900	209	245	253	237	254	174	177	240	221
2000	191	184	206	184	200	138	134	193	177
2100	124	162	100	171	118	113	75	135	123
2200	86	92	82	95	85	64	51	88	79
2300	54	59	62	67	71	67	39	63	60
2400	32	17	28	34	68	53	15	36	35
08-09	251	319	281	303	353	118	71	301	242
17-18	295	337	320	325	296	223	175	315	282
07-19	2908	3217	3068	3040	3264	2446	2029	3099	2853
07-23	3363	3714	3518	3557	3738	2828	2328	3578	3292
00-24	3518	3880	3669	3743	3944	3093	2530	3751	3482



Site Number 23388-5
Description Raby Place, West of Sydney Wharf
Direction Northbound

25-Sep-23

Table with columns: Time, Total Motorised Vehicles, Cycles, Motor Cycles, Number Vehicle Classes, Percentage Vehicle classes, Vehicle Speed, P-Tile, Average Speed, Standard deviation. Rows include individual time points from 0015 to 2400 and summary rows for 08-09, 17-18, 07-19, 07-23, and 00-24.

Site Number 23388-5
Description Raby Place, West of Sydney Wharf
Direction Northbound

26-Sep-23

Table with columns: Time, Total Motorised Vehicles, Totals, Cycles, Motor Cycles, Number Vehicle Classes DFT 2010 + COBA Scheme (Car, LGV, 2 Axle Rigid, 3 Axle Rigid, 4 Axle Rigid, 3 Axle Artic., 4 Axle Artic., 5+ Axle Artic., Buses), Percentage Vehicle classes DFT 2010 + COBA Scheme (Cycles, Motor Cycles, Cars, LGV, 2 Axle Rigid, 3 Axle Rigid, 4 Axle Rigid, 3 Axle Artic., 4 Axle Artic., 5+ Axle Artic., Buses), Vehicle Speed (MPH bins from <5mph to >95mph), P-Tile 85%, Average Speed, Standard deviation.

Site Number 23388-5
Description Raby Place, West of Sydney Wharf
Direction Northbound

27-Sep-23

Table with multiple columns: Time, Total Motorist Vehicles, Cycles, Motor Cycles, Number Vehicle Classes (Car, LGV, 2 Axle Rigid, 3 Axle Rigid, 4 Axle Rigid, 3 Axle Artic, 4 Axle Artic, 5+ Axle Artic, Buses), Percentage Vehicle classes DFT 2010 + COBA Scheme, Vehicle Speed (MPH 0 to 95), P-Tile 85%, Average Speed, Standard deviation.

Site Number 23388-5
Description Raby Place, West of Sydney Wharf
Direction Northbound

28-Sep-23

Table with columns: Time, Total Motorised Vehicles, Cycles, Motor Cycles, Number Vehicle Classes (Car, LGV, 2 Axle Rigid, 3 Axle Rigid, 4 Axle Rigid, 3 Axle Artic, 4 Axle Artic, 5+ Axle Artic, Buses), Percentage Vehicle classes (Cycles, Motor Cycles, Cars, LGV, 2 Axle Rigid, 3 Axle Rigid, 4 Axle Rigid, 3 Axle Artic, 4 Axle Artic, 5+ Axle Artic, Buses), Vehicle Speed (MPH 0-95), P-Tile 85%, Average Speed, Standard deviation.

Site Number 23388-5
Description Raby Place, West of Sydney Wharf
Direction Northbound

29-Sep-23

Table with columns: Time, Total Motorised Vehicles, Cycles, Motor Cycles, Number Vehicle Classes (Car, LGV, 2 Axle Rigid, 3 Axle Rigid, 4 Axle Rigid, 3 Axle Artic, 4 Axle Artic, 5+ Axle Artic, Buses), Percentage Vehicle classes, Vehicle Speed (MPH 0-95), P-Tile 85%, Average Speed, Standard deviation.

Site Number 23388-5
Description Raby Place, West of Sydney Wharf
Direction Northbound

01-Oct-23

Table with columns: Time, Total Motorised Vehicles, Cycles, Motor Cycles, Number Vehicle Classes DFT 2010 + COBA Scheme (Car, LGV, 2 Axle Rigid, 3 Axle Rigid, 4 Axle Rigid, 3 Axle Artic, 4 Axle Artic, 5+ Axle Artic, Buses), Percentage Vehicle classes DFT 2010 + COBA Scheme (Cycles, Motor Cycles, Cars, LGV, 2 Axle Rigid, 3 Axle Rigid, 4 Axle Rigid, 3 Axle Artic, 4 Axle Artic, 5+ Axle Artic, Buses), Vehicle Speed (MPH 0-95), P-Tile 85%, Average Speed, Standard deviation.

Site Number 23388-5
 Description Raby Place, West of Sydney Wharf
 Direction Northbound

Grand Total

Time	Total Motorised Vehicles	Totals	Cycles	Motor Cycles	Number Vehicle Classes DFT 2010 + COBA Scheme										Percentage Vehicle classes DFT 2010 + COBA Scheme										Vehicle Speed													P-Tile 85%	Average Speed	Standard deviation												
					Car	LGV	2 Axle Rigid	3 Axle Rigid	4 Axle Rigid	3 Axle Artic.	4 Axle Artic.	5+ Axle Artic.	Buses	Cycles	Motor Cycles	Cars	LGV	2 Axle Rigid	3 Axle Rigid	4 Axle Rigid	3 Axle Artic.	4 Axle Artic.	5+ Axle Artic.	Buses	MPH 0 <5mph	MPH 5 <10mph	MPH 10 <15mph	MPH 15 <20mph	MPH 20 <25mph	MPH 25 <30mph	MPH 30 <35mph	MPH 35 <40mph	MPH 40 <45mph	MPH 45 <50mph	MPH 50 <55mph	MPH 55 <60mph	MPH 60 <65mph				MPH 65 <70mph	MPH 70 <75mph	MPH 75 <80mph	MPH 80 <85mph	MPH 85 <90mph	MPH 90 <95mph	MPH 95 <100mph					
--	24377	24764	387	483	18736	3360	709	28	16	94	0	6	945	1.563	1.95	75.66	13.57	2.863	0.113	0.065	0.38	0	0.024	3.816	47	614	1461	7071	10737	3985	728	102	16	1	1	0	0	0	0	0	0	0	0	0	0	0	0	0	1	25.8	21.3	4.9

Site Number 23388-5
Description Raby Place, West of Sydney Wharf
Direction Northbound

Grand Total

Table with columns: Time, Total Motorised Vehicles, Totals, Cycles, Motor Cycles, Car, LGV, 2 Axle Rigid, 3 Axle Rigid, 4 Axle Rigid, 3 Axle Artic, 4 Axle Artic, 5+ Axle Artic, Buses, Cycles, Motor Cycles, Cars, LGV, 2 Axle Rigid, 3 Axle Rigid, 4 Axle Rigid, 3 Axle Artic, 4 Axle Artic, 5+ Axle Artic, Buses, Vehicle Speed (MPH 0-95), MPH <5mph, MPH <10mph, MPH <15mph, MPH <20mph, MPH <25mph, MPH <30mph, MPH <35mph, MPH <40mph, MPH <45mph, MPH <50mph, MPH <55mph, MPH <60mph, MPH <65mph, MPH <70mph, MPH <75mph, MPH <80mph, MPH <85mph, MPH <90mph, MPH <95mph, MPH <100mph.