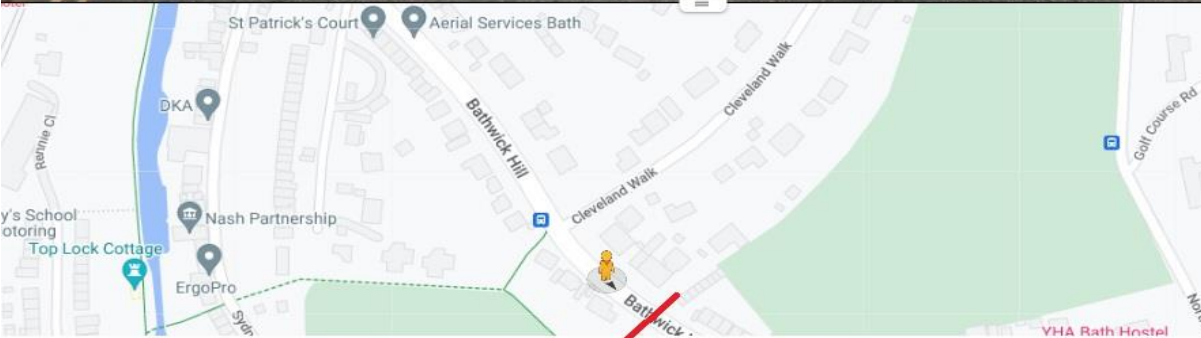
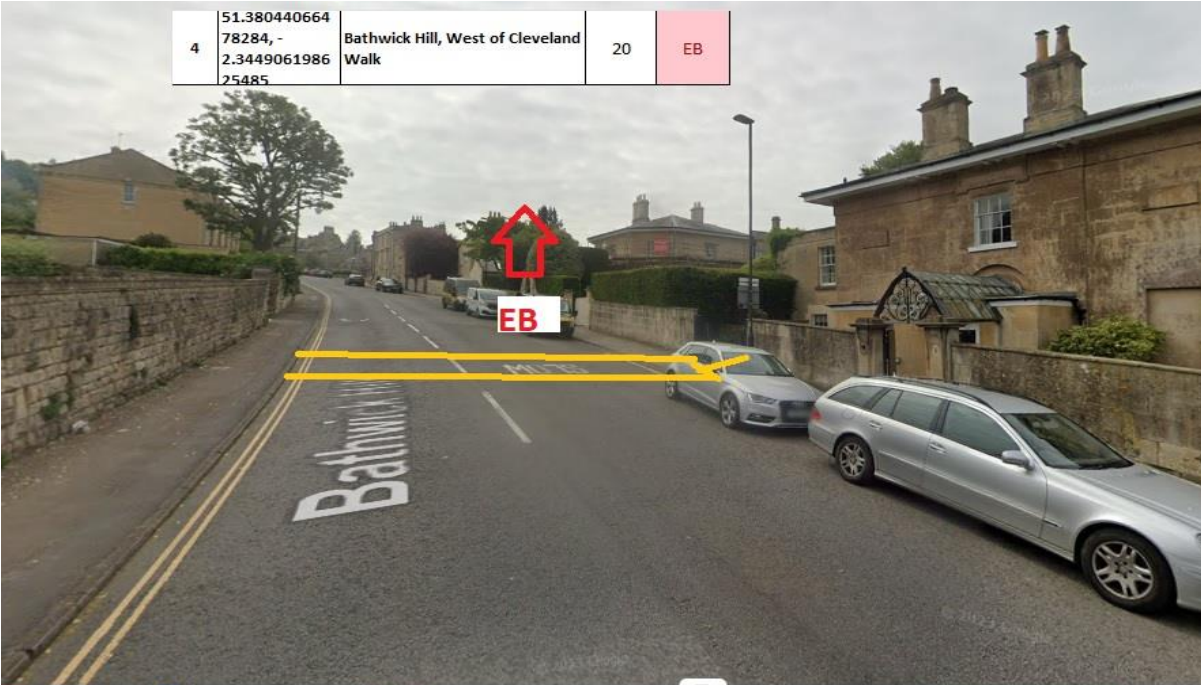


**Site Number** 23388-4  
**Description** Bathwick Hill, West of Cleveland Walk  
**Direction** Eastbound

**Location**

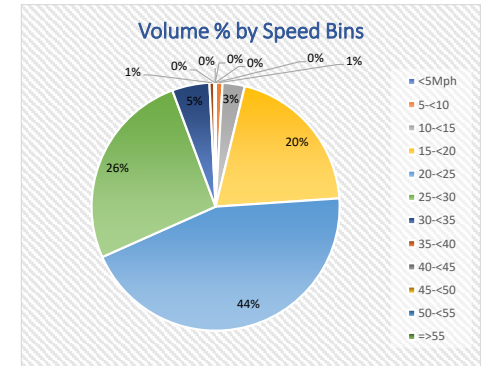
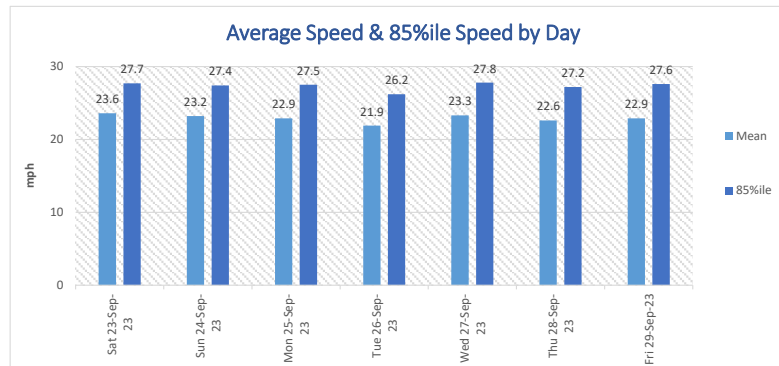
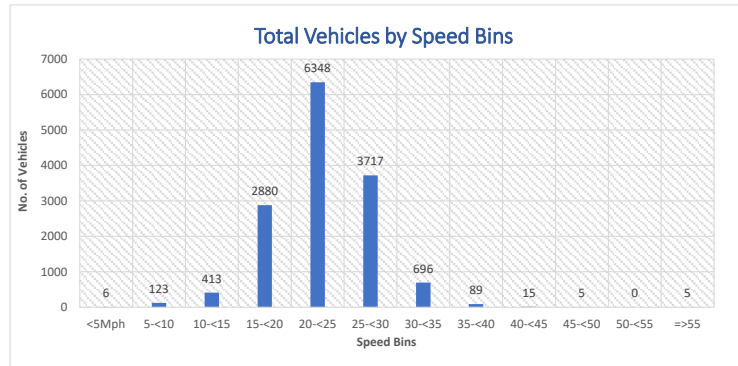


**Observations** Data loss due to parking for the following period  
11.30 Tuesday 26th September 2023 to 14.30 Wednesday 27th September 2023  
09:15 to 11:00 Thursday 2023

**Site Number** 23388-4  
**Description** Bathwick Hill, West of Cleveland Walk  
**Direction** Eastbound  
**Posted Speed Limit(mph)** 20mph

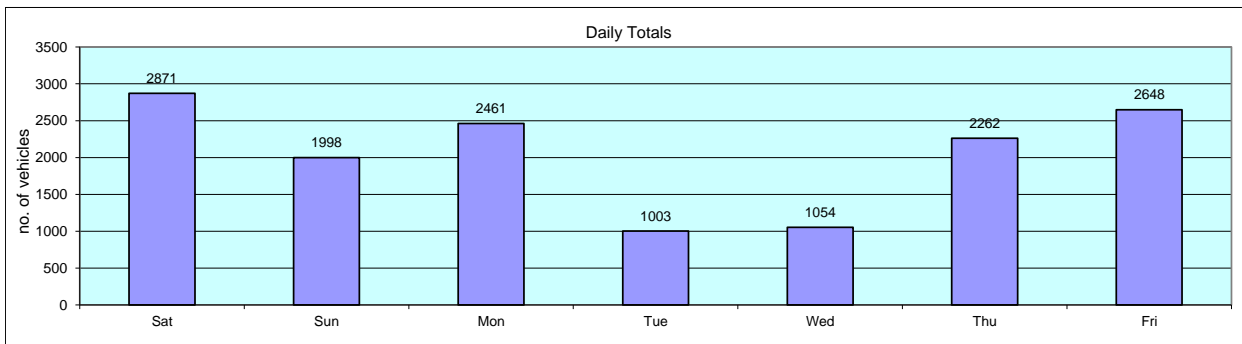
Start Date	End Date	Total Vehicles	5 Day Ave.	7 Day Ave.	Average 85%ile Speed	Average Mean Speed	Standard Dev.
Sat 23-Sep-23	Fri 29-Sep-23	14297	1886	2042	27.5	23.0	4.7

Time Period	Total Vehicles	85%ile Speed	Mean Speed	Stand Dev.	<5Mph	5-<10	10-<15	15-<20	20-<25	25-<30	30-<35	35-<40	40-<45	45-<50	50-<55	=>55
Sat 23-Sep-23	2871	27.7	23.6	4.6	0	19	57	441	1329	851	149	18	4	1	0	2
Sun 24-Sep-23	1998	27.4	23.2	4.4	2	12	46	375	914	543	91	14	1	0	0	0
Mon 25-Sep-23	2461	27.5	22.9	4.7	1	27	76	495	1061	668	117	12	3	1	0	0
Tue 26-Sep-23	1003	26.2	21.9	5.2	1	17	60	234	457	187	34	10	1	1	0	1
Wed 27-Sep-23	1054	27.8	23.3	4.4	2	4	18	209	467	287	61	6	0	0	0	0
Thu 28-Sep-23	2262	27.2	22.6	4.7	0	28	74	528	969	545	104	12	1	0	0	1
Fri 29-Sep-23	2648	27.6	22.9	4.7	0	16	82	598	1151	636	140	17	5	2	0	1
<b>Total Vehicles</b>																
[--]	14297	27.5	23.0	4.7	6	123	413	2880	6348	3717	696	89	15	5	0	5



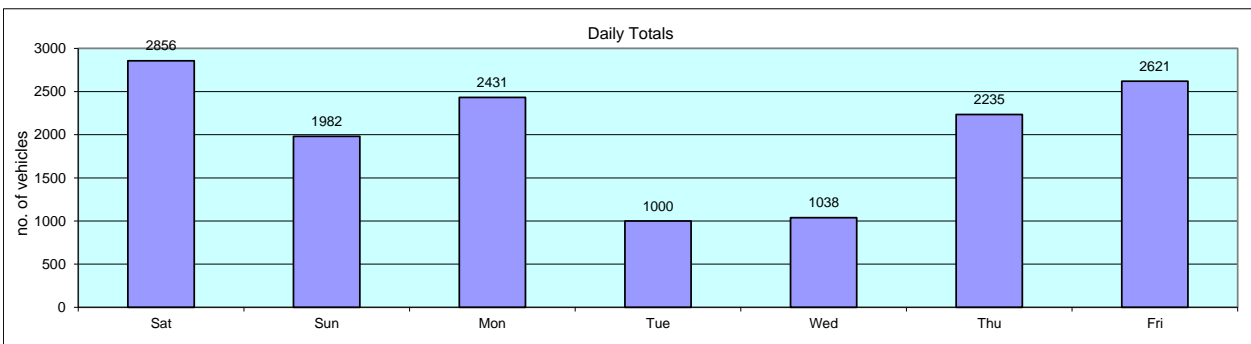
**Site Number** 23388-4  
**Description** Bathwick Hill, West of Cleveland Walk  
**Direction** Eastbound

Time	Sat 23-Sep-23	Sun 24-Sep-23	Mon 25-Sep-23	Tue 26-Sep-23	Wed 27-Sep-23	Thu 28-Sep-23	Fri 29-Sep-23	Weekday Av.	7day Av.
0100	21	0	0	1	0	2	0	1	3
0200	20	0	0	0	0	1	2	1	3
0300	14	0	0	0	0	0	0	0	2
0400	15	0	0	0	0	0	0	0	2
0500	7	0	0	0	0	0	1	0	1
0600	5	0	0	0	0	0	0	0	1
0700	23	0	0	0	0	0	0	0	3
0800	65	0	2	0	0	1	1	1	10
0900	151	0	4	1	0	2	2	2	23
1000	212	1	2	1	0	0	3	1	31
1100	228	1	3	0	0	0	4	1	34
1200	246	0	1	0	0	3	1	1	36
1300	222	0	0	0	0	1	1	0	32
1400	201	2	2	0	0	0	1	1	29
1500	205	1	2	0	5	0	1	2	31
1600	205	0	2	0	0	1	1	1	30
1700	262	2	2	0	2	5	1	2	39
1800	214	4	5	0	2	3	3	3	33
1900	162	1	2	0	6	2	1	2	25
2000	162	2	2	0	1	2	3	2	25
2100	83	1	1	0	0	0	0	0	12
2200	62	1	0	0	0	2	1	1	9
2300	54	0	0	0	0	1	0	0	8
2400	32	0	0	0	0	1	0	0	5
<b>08-09</b>	<b>151</b>	<b>0</b>	<b>4</b>	<b>1</b>	<b>0</b>	<b>2</b>	<b>2</b>	<b>2</b>	<b>23</b>
<b>17-18</b>	<b>214</b>	<b>143</b>	<b>164</b>	<b>0</b>	<b>176</b>	<b>182</b>	<b>159</b>	<b>136</b>	<b>148</b>
<b>07-19</b>	<b>2373</b>	<b>1649</b>	<b>2075</b>	<b>913</b>	<b>776</b>	<b>1821</b>	<b>2212</b>	<b>1559</b>	<b>1688</b>
<b>07-23</b>	<b>2734</b>	<b>1888</b>	<b>2335</b>	<b>913</b>	<b>1032</b>	<b>2124</b>	<b>2490</b>	<b>1779</b>	<b>1931</b>
<b>00-24</b>	<b>2871</b>	<b>1998</b>	<b>2461</b>	<b>1003</b>	<b>1054</b>	<b>2262</b>	<b>2648</b>	<b>1886</b>	<b>2042</b>



**Site Number** 23388-4  
**Description** Bathwick Hill, West of Cleveland Walk  
**Direction** Eastbound

Volumetric Summary - Motorised Vehicles									
Time	Sat 23-Sep-23	Sun 24-Sep-23	Mon 25-Sep-23	Tue 26-Sep-23	Wed 27-Sep-23	Thu 28-Sep-23	Fri 29-Sep-23	Weekday Av.	7day Av.
0100	21	24	9	17	0	17	17	12	15
0200	20	20	11	11	0	15	7	9	12
0300	14	13	17	7	0	22	12	12	12
0400	15	13	10	7	0	8	16	8	10
0500	7	5	11	9	0	8	9	7	7
0600	5	7	12	10	0	12	15	10	9
0700	23	7	41	28	0	29	38	27	24
0800	65	39	146	154	0	129	139	114	96
0900	151	52	261	338	0	365	303	253	210
1000	211	89	168	207	0	0	184	112	123
1100	226	178	175	184	0	0	165	105	133
1200	244	161	162	21	0	128	166	95	126
1300	222	192	172	7	0	170	167	103	133
1400	200	161	175	0	0	168	162	101	124
1500	204	169	170	0	81	141	181	115	135
1600	202	173	149	0	164	166	195	135	150
1700	262	183	168	0	199	196	234	159	177
1800	214	139	159	0	174	179	156	134	146
1900	159	101	143	0	143	161	140	117	121
2000	160	92	101	0	110	119	101	86	98
2100	83	66	69	0	57	69	63	52	58
2200	62	48	48	0	54	67	53	44	47
2300	54	29	39	0	34	43	57	35	37
2400	32	21	15	0	22	23	41	20	22
<b>08-09</b>	<b>151</b>	<b>52</b>	<b>261</b>	<b>338</b>	<b>0</b>	<b>365</b>	<b>303</b>	<b>253</b>	<b>210</b>
<b>17-18</b>	<b>214</b>	<b>139</b>	<b>159</b>	<b>0</b>	<b>174</b>	<b>179</b>	<b>156</b>	<b>134</b>	<b>146</b>
<b>07-19</b>	<b>2360</b>	<b>1637</b>	<b>2048</b>	<b>911</b>	<b>761</b>	<b>1803</b>	<b>2192</b>	<b>1543</b>	<b>1673</b>
<b>07-23</b>	<b>2719</b>	<b>1872</b>	<b>2305</b>	<b>911</b>	<b>1016</b>	<b>2101</b>	<b>2466</b>	<b>1760</b>	<b>1913</b>
<b>00-24</b>	<b>2856</b>	<b>1982</b>	<b>2431</b>	<b>1000</b>	<b>1038</b>	<b>2235</b>	<b>2621</b>	<b>1865</b>	<b>2023</b>



Site Number 23388-4
Description Bathwick Hill, West of Cleveland Walk
Direction Eastbound

23-Sep-23

Table with columns: Time, Total Motorised Vehicles, Totals, Cycles, Motor Cycles, Number Vehicle Classes DFT 2010 + COBA Scheme (Car, LGV, 2 Axle Rigid, 3 Axle Rigid, 4 Axle Rigid, 3 Axle Artic, 4 Axle Artic, 5+ Axle Artic, Buses), Percentage Vehicle classes DFT 2010 + COBA Scheme (Cycles, Motor Cycles, Cars, LGV, 2 Axle Rigid, 3 Axle Rigid, 4 Axle Rigid, 3 Axle Artic, 4 Axle Artic, 5+ Axle Artic, Buses), Vehicle Speed (MPH 0-95), P-Tile 85%, Average Speed, Standard deviation.

Site Number 23388-4
Description Bathwick Hill, West of Cleveland Walk
Direction Eastbound

24-Sep-23

Table with columns: Time, Total Motorised Vehicles, Cycles, Motor Cycles, Number Vehicle Classes (Car, LGV, 2 Axle Rigid, 3 Axle Rigid, 4 Axle Rigid, 3 Axle Artic., 4 Axle Artic., 5+ Axle Artic., Buses), Percentage Vehicle classes (Cycles, Motor Cycles, Cars, LGV, 2 Axle Rigid, 3 Axle Rigid, 4 Axle Rigid, 3 Axle Artic., 4 Axle Artic., 5+ Axle Artic., Buses), Vehicle Speed (MPH 0-95), P-Tile 85%, Average Speed, Standard deviation.

Site Number 23388-4
Description Bathwick Hill, West of Cleveland Walk
Direction Eastbound

25-Sep-23

Table with columns: Time, Total Motorised Vehicles, Cycles, Motor Cycles, Number Vehicle Classes (Car, LGV, 2 Axle Rigid, 3 Axle Rigid, 4 Axle Rigid, 3 Axle Artic, 4 Axle Artic, 5+ Axle Artic, Buses), Percentage Vehicle classes, and Vehicle Speed (MPH 0-95). Rows include individual time points and summary rows for 08-09, 17-18, 07-19, 07-23, and 00-24.

Site Number 23388-4
Description Bathwick Hill, West of Cleveland Walk
Direction Eastbound

26-Sep-23

Table with columns: Time, Total Motorised Vehicles, Totals, Cycles, Motor Cycles, Number Vehicle Classes DFT 2010 + COBA Scheme (Car, LGV, 2 Axle Rigid, 3 Axle Rigid, 4 Axle Rigid, 3 Axle Artic, 4 Axle Artic, 5+ Axle Artic, Buses), Percentage Vehicle classes DFT 2010 + COBA Scheme (Cycles, Motor Cycles, Cars, LGV, 2 Axle Rigid, 3 Axle Rigid, 4 Axle Rigid, 3 Axle Artic, 4 Axle Artic, 5+ Axle Artic, Buses), Vehicle Speed (MPH 0-95), P-Tile 85%, Average Speed, Standard deviation.



Site Number 23388-4
Description Bathwick Hill, West of Cleveland Walk
Direction Eastbound

27-Sep-23

Table with columns for Time, Total Motorist Vehicles, Cycles, Motor Cycles, Number Vehicle Classes (Car, LGV, 2 Axle Rigid, 3 Axle Rigid, 4 Axle Rigid, 3 Axle Artic, 4 Axle Artic, 5+ Axle Artic, Buses), Percentage Vehicle classes DFT 2010 + COBA Scheme, and Vehicle Speed (MPH 0-95). Rows include time intervals from 0015 to 2400 and summary rows for 08-09, 17-18, 07-19, 07-23, and 00-24.

Site Number 23388-4
Description Bathwick Hill, West of Cleveland Walk
Direction Eastbound

28-Sep-23

Table with columns: Time, Total Motorised Vehicles, Cycles, Motor Cycles, Number Vehicle Classes (Car, LGV, 2 Axle Rigid, 3 Axle Rigid, 4 Axle Rigid, 3 Axle Artic, 4 Axle Artic, 5+ Axle Artic, Buses), Percentage Vehicle classes, Vehicle Speed (MPH 0-95), P-Tile 85%, Average Speed, Standard deviation.

Site Number 23388-4  
Description Bathwick Hill, West of Cleveland Walk  
Direction Eastbound

29-Sep-23

Table with columns: Time, Total Motorised Vehicles, Totals, Cycles, Motor Cycles, Number Vehicle Classes DFT 2010 + COBA Scheme (Car, LGV, 2 Axle Rigid, 3 Axle Rigid, 4 Axle Rigid, 3 Axle Artic, 4 Axle Artic, 5+ Axle Artic, Buses), Percentage Vehicle classes DFT 2010 + COBA Scheme (Cycles, Motor Cycles, Cars, LGV, 2 Axle Rigid, 3 Axle Rigid, 4 Axle Rigid, 3 Axle Artic, 4 Axle Artic, 5+ Axle Artic, Buses), Vehicle Speed (MPH 0-95), P-Tile 85%, Average Speed, Standard deviation.

Site Number 23388-4  
 Description Bathwick Hill, West of Cleveland Walk  
 Direction Eastbound

Grand Total

Time	Total Motorised Vehicles	Totals	Cycles	Motor Cycles	Number Vehicle Classes DFT 2010 + COBA Scheme										Percentage Vehicle classes DFT 2010 + COBA Scheme										Vehicle Speed													P-Tile 85%	Average Speed	Standard deviation								
					Car	LGV	2 Axle Rigid	3 Axle Rigid	4 Axle Rigid	3 Axle Artic.	4 Axle Artic.	5+ Axle Artic.	Buses	Cycles	Motor Cycles	Cars	LGV	2 Axle Rigid	3 Axle Rigid	4 Axle Rigid	3 Axle Artic.	4 Axle Artic.	5+ Axle Artic.	Buses	MPH 0 <5mph	MPH 5 <10mph	MPH 10 <15mph	MPH 15 <20mph	MPH 20 <25mph	MPH 25 <30mph	MPH 30 <35mph	MPH 35 <40mph	MPH 40 <45mph	MPH 45 <50mph	MPH 50 <55mph	MPH 55 <60mph	MPH 60 <65mph				MPH 65 <70mph	MPH 70 <75mph	MPH 75 <80mph	MPH 80 <85mph	MPH 85 <90mph	MPH 90 <95mph	MPH 95 <100mph	
--	14163	14297	134	202	12991	508	186	23	20	24	3	6	200	0.937	1.413	90.87	3.553	1.301	0.161	0.14	0.168	0.021	0.042	1.399	6	123	413	2880	6348	3717	696	89	15	5	0	3	0	1	0	1	0	0	0	0	0	27.5	23	4.7

Site Number 23388-4
Description Bathwick Hill, West of Cleveland Walk
Direction Eastbound

Grand Total

Table with columns for Time, Motorised Vehicles, Cycles, Motor Cycles, Car, LGV, and various vehicle classes (2 Axle Rigid, 3 Axle Rigid, etc.), followed by a percentage breakdown and vehicle speed distribution (MPH 0-95).